



# HAZARD REPORT

## SEVERE WEATHER

### SPRINGFIELD-GREENE COUNTY OFFICE OF EMERGENCY MANAGEMENT

#### Emergency Operations Center Partner Agencies

01/08/2026 | 0910 hours    **Hazard Event #: 26-001**

#### Watches / Warnings / Advisories:

None at this time.

HAZARD	Jan. 08
Severe Thunderstorm	Marginal
Tornado	Marginal
Thunderstorm Wind	Marginal
Lightning	Limited
Wind	Limited
Grassland Fire Danger Index (GFDI)	Very High

#### DISCUSSION

Gusty southerly winds will occur across the area this morning into this afternoon. Gusts of 30 to 40 mph will occur at times.

Showers and some thunderstorms will develop and move northeast through the area this morning and afternoon. There is a Marginal risk of strong to severe storms, with scattered damaging winds up to 60 mph being the main risk. There is a low risk for a brief isolated tornado. Locally heavy rainfall will also be possible mainly northwest of I-44 but the flooding risk is low.

#### CITIZEN ACTION STATEMENT

- Have a severe weather shelter plan. Review your emergency kit and identify the closest safe shelter.
- Have a way of receiving severe weather warnings (NOAA Weather Radio, social media, news media, etc.)
- Take shelter when lightning is in the area.
- **“When thunder roars . . . go indoors!”**
- Citizens with outdoor recreational plans along rivers and streams should be alert for the potential for lightning strikes and rapidly rising water levels.

**“Turn around . . . don’t drown!”**

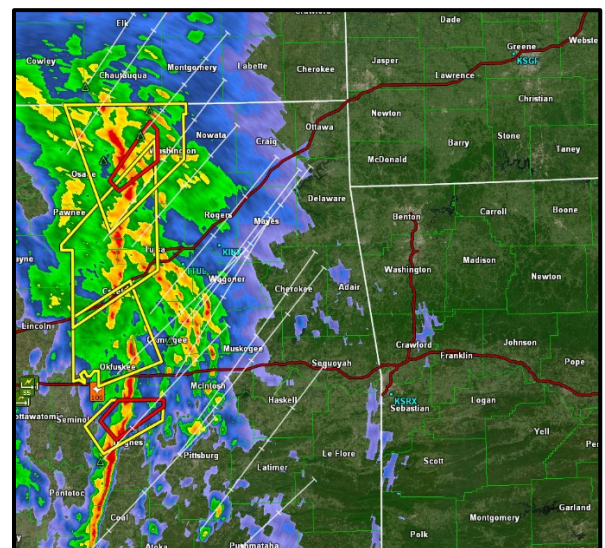
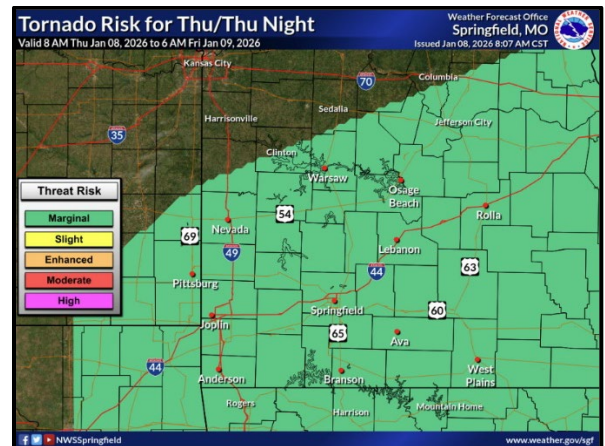
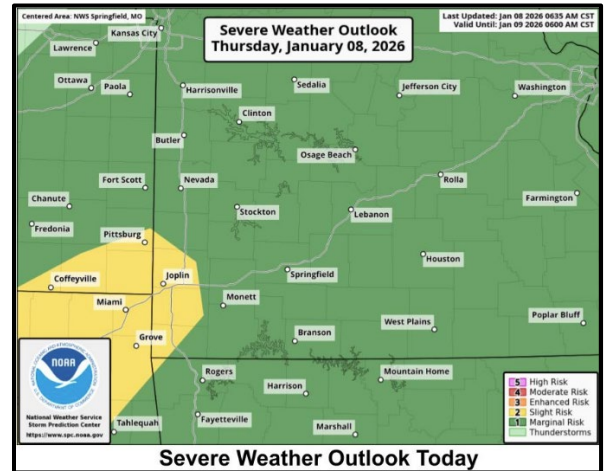
#### EMERGENCY MANAGEMENT ISSUES

Springfield-Greene County  
EOC:

**OpCon Level 4: Monitoring**

\*\*\* OEM will continue to monitor this developing weather situation. \*\*\*

#### ONLINE



picture from GR Level 3 @ 0850