

Greene County GIS Office

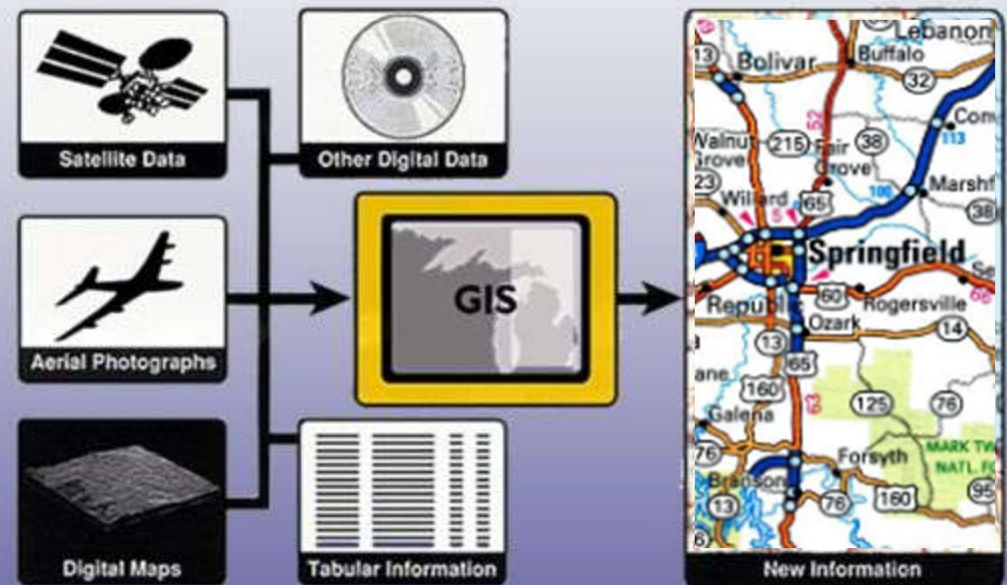
June 24, 2025

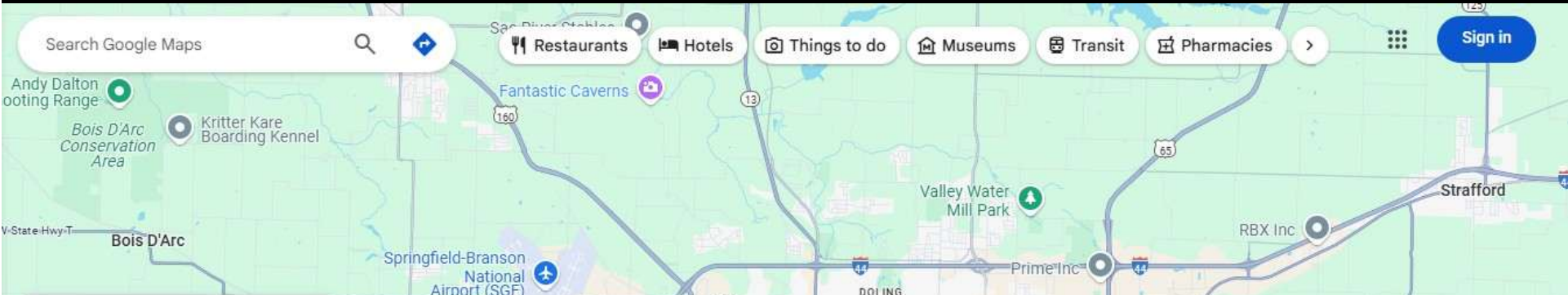
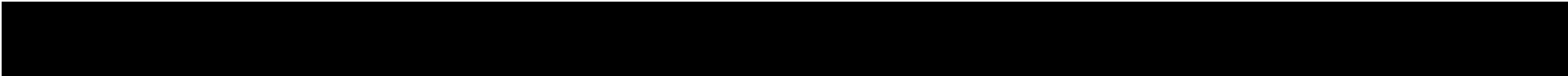


Geographic Information System

Maps + Information = GIS

A **GIS** is a collection of computer hardware, software, and geographic data for digitally capturing, managing, analyzing, and displaying all forms of geographically referenced information.





Map details [Close]

- Transit
- Traffic
- Biking
- Terrain
- Street View
- Wildfires
- Air Quality

Map tools

- Travel time
- Measure

Map type

- Default
- Satellite

Globe view ? Labels

Map navigation controls including a compass, zoom in (+) and zoom out (-) buttons, a street view pegman icon, and a 'B&B Well and Pump Service' label.

Rutledge-Wilson Farm Park



Rutledge-Wilson Farm Park

4.6 ★★★★★ (1,484)
Park · 🚗

Overview Reviews About

- Directions
- Save
- Nearby
- Send to phone
- Share

200+ acre community farm site featuring animals, demonstration gardens, prairie & a milking barn. >
✓ Dogs allowed

- 3825 W Farm Rd 146, Springfield, MO 65807
- Open · Closes 5 PM
- parkboard.org
- (417) 837-5949
- 5JRQ+GP Springfield, Missouri

Suggest an edit

Restaurants Hotels Things to do Transit Parking Pharmacies Sign in

Layers

Map data ©2025 Google United States Terms Privacy Send Product Feedback 2 mi

Tornado Warning

Valid Until
9:45 AM CDT Tuesday
April 29, 2025

Threat Information



TORNADO
Radar Indicated



HAIL
Pea
Sized Possible

Potential Exposure



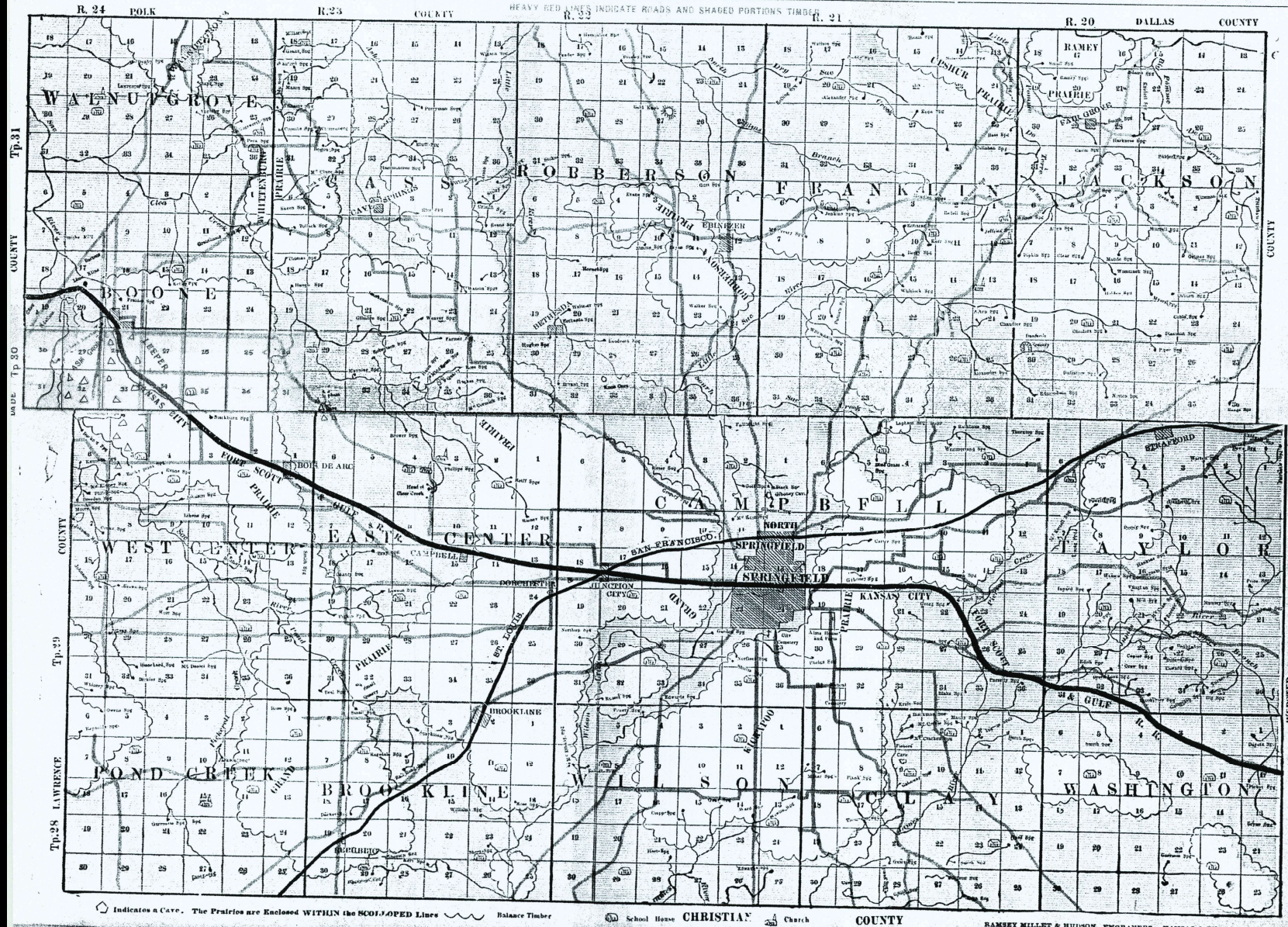
Population: 342,450
Schools: 88
Hospitals: 6



SECTIONAL MAP OF GREENE COUNTY, MISSOURI, 1881.

A. M. Lapham & Co., Real Estate Agents, Springfield, Mo.

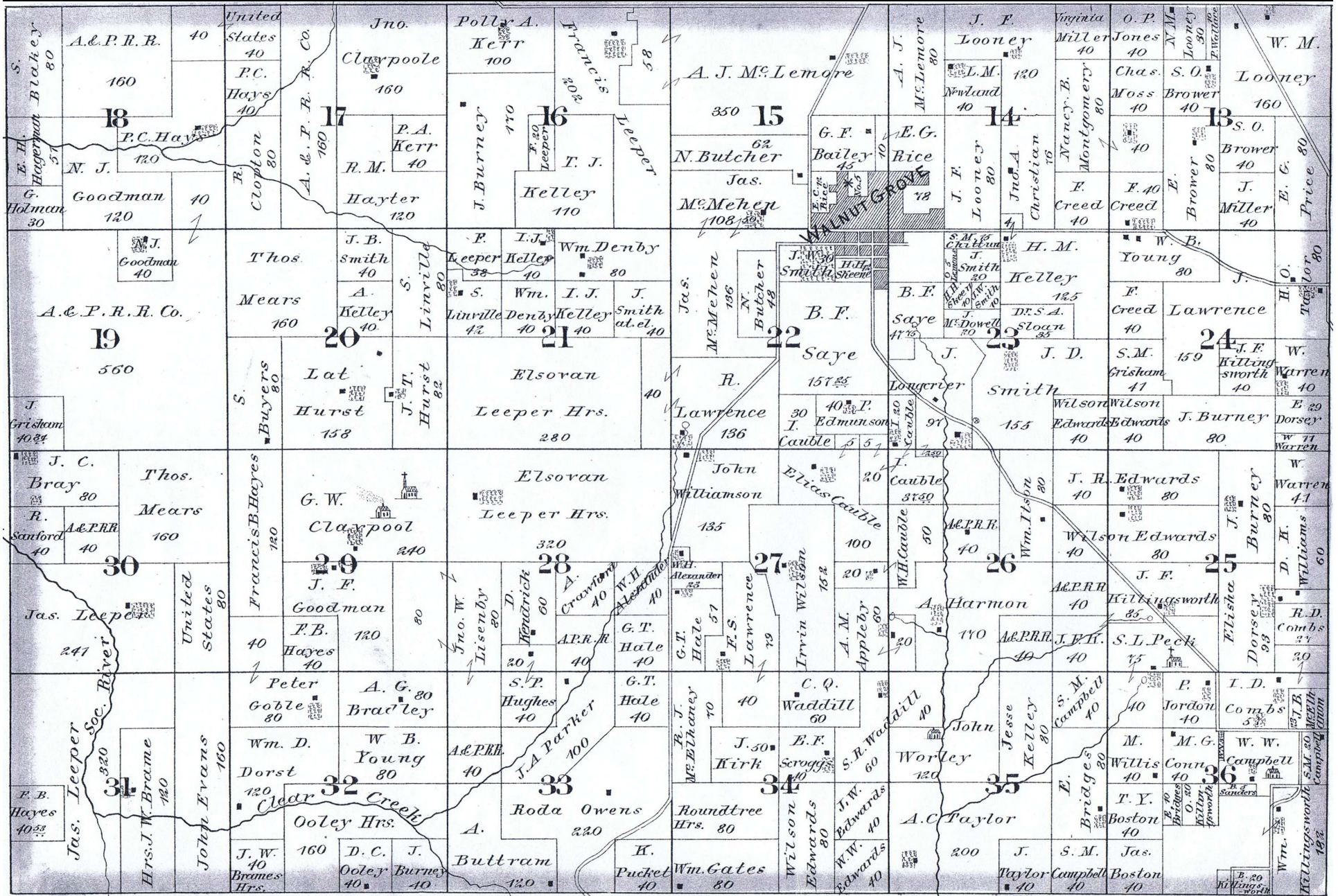
This map copy given to Greene County courtesy of Vera Price
Chandler and Molly Chandler Faulkner
April 2009



Indicates a Cave. The Prairies are Enclosed WITHIN the SCOTI-SLOPED Lines Balance Timber School House CHRISTIAN Church

COUNTY

RAMSEY MILLET & HUDSON ENGRAVERS, KANSAS CITY



S. H. Hagerman Blocky 80
A.P.R.R. 40
40
160
18
P.C. Hays 40
N. J. 120
Goodman 120
40
G. Holman 30

United States 40
P.C. Hays 40
R. Clopton 80
A.P.R.R. Co. 160
17
Jno. Clarpoole 160
P.A. Kerr 40
R.M. 40
Hayter 120

Polly A. Kerr 100
Francis 202
16
J. Burney 170
T. J. Leeper
Keller 110

A. J. Mc Lemoire 350
15
N. Butcher 62
Jas. McMeher 108
G. F. Bailey 45
E. G. Rice 78
A. J. Mc Lemoire 80
J. F. Looney 120
Newland 40
J. F. Looney 80
Jud. A. Christian 76
Nancy B. Montgomery 80
Virginia Miller 40
O. P. Jones 40
Chas. S. O. Moss 40
S. O. Brower 40
W. M. Looney 160
S. O. Brower 40
J. Miller 40
E. C. Price 80

J. F. Looney 120
Virginia Miller 40
O. P. Jones 40
Chas. S. O. Moss 40
S. O. Brower 40
W. M. Looney 160
S. O. Brower 40
J. Miller 40
E. C. Price 80

W. M. Looney 160
S. O. Brower 40
J. Miller 40
E. C. Price 80

J. Goodman 40
A.P.R.R. Co. 560
19
J. Grisham 40

Thos. Mears 160
J. B. Smith 40
A. Kelley 40
S. Buyers 80
Lat. Hurst 158
J. I. Hurst 82

J. B. Smith 40
A. Kelley 40
S. Buyers 80
Lat. Hurst 158
J. I. Hurst 82
P. I. J. Wm. Denby 80
Keller 40
S. Wm. I. J. J. Smith at. el. 40
Linville Denby Kelley 40
21
Elsoran Leeper Hrs. 280

Jas. McMeher 196
N. Butcher 49
22
B. F. Saye 157
R. Lawrence 136
John Williamson 135
J. F. Looney 80
Jud. A. Christian 76
Nancy B. Montgomery 80
Virginia Miller 40
O. P. Jones 40
Chas. S. O. Moss 40
S. O. Brower 40
W. M. Looney 160
S. O. Brower 40
J. Miller 40
E. C. Price 80

J. F. Looney 80
Jud. A. Christian 76
Nancy B. Montgomery 80
Virginia Miller 40
O. P. Jones 40
Chas. S. O. Moss 40
S. O. Brower 40
W. M. Looney 160
S. O. Brower 40
J. Miller 40
E. C. Price 80

W. M. Looney 160
S. O. Brower 40
J. Miller 40
E. C. Price 80

J. C. Bray 80
R. Stanford 40
A.P.R.R. 40
30
Jas. Leeper 241
United States 80

Thos. Mears 160
Francis B. Hayes 120
G. W. Claypool 240
J. F. Goodman 80
F. B. Hayes 40
Peter Goble 80
A. G. Bradley 80
Wm. D. Dorst 120
W. B. Young 80
J. W. Brames Hrs. 40

Elsoran Leeper Hrs. 280
John Williamson 135
J. F. Looney 80
Jud. A. Christian 76
Nancy B. Montgomery 80
Virginia Miller 40
O. P. Jones 40
Chas. S. O. Moss 40
S. O. Brower 40
W. M. Looney 160
S. O. Brower 40
J. Miller 40
E. C. Price 80

John Williamson 135
J. F. Looney 80
Jud. A. Christian 76
Nancy B. Montgomery 80
Virginia Miller 40
O. P. Jones 40
Chas. S. O. Moss 40
S. O. Brower 40
W. M. Looney 160
S. O. Brower 40
J. Miller 40
E. C. Price 80

J. F. Looney 80
Jud. A. Christian 76
Nancy B. Montgomery 80
Virginia Miller 40
O. P. Jones 40
Chas. S. O. Moss 40
S. O. Brower 40
W. M. Looney 160
S. O. Brower 40
J. Miller 40
E. C. Price 80

W. M. Looney 160
S. O. Brower 40
J. Miller 40
E. C. Price 80

F. B. Hayes 40
Hrs. J. W. Brame 120
John Evans 160
31
Jas. Leeper 241
United States 80

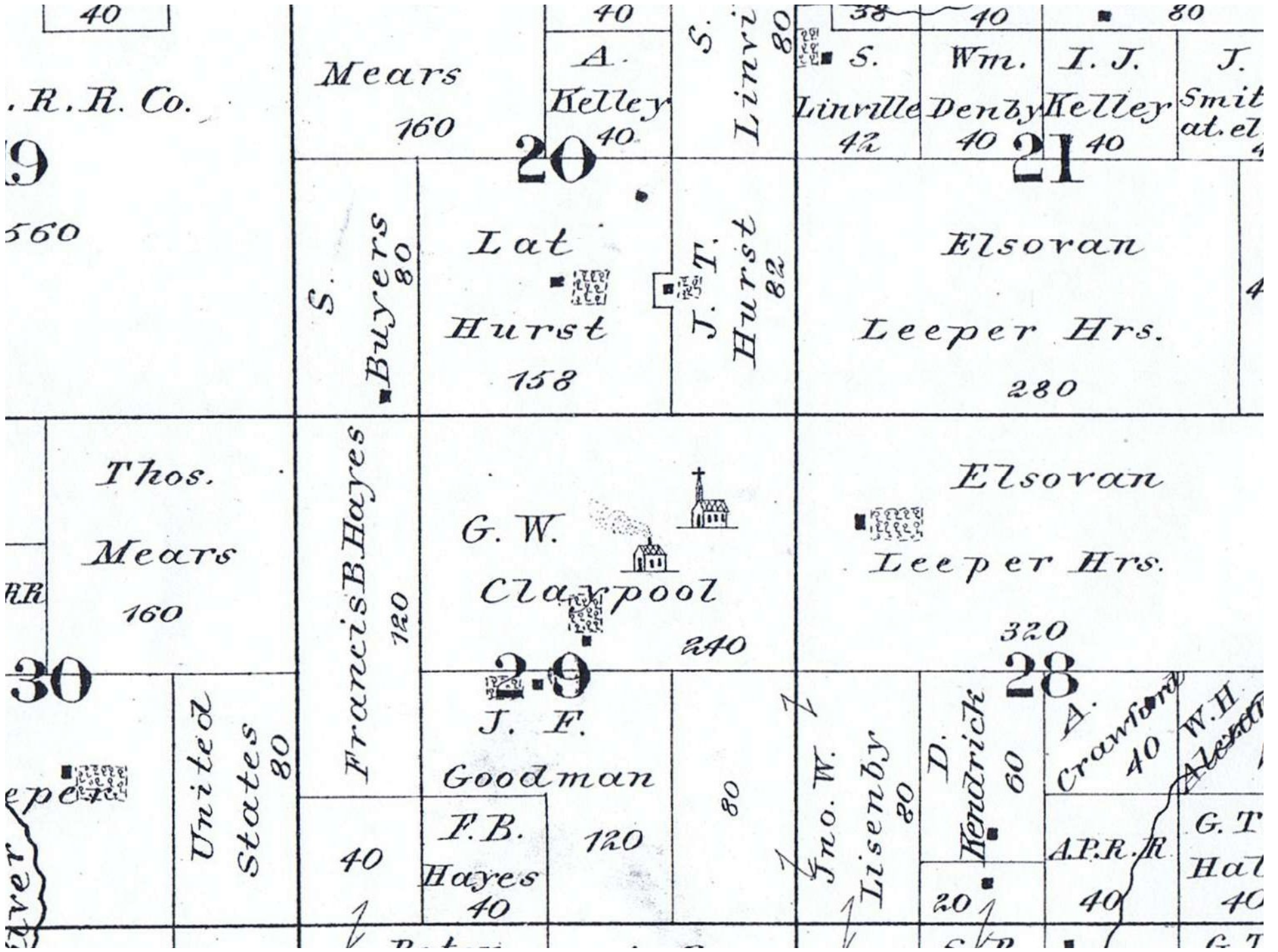
Peter Goble 80
A. G. Bradley 80
Wm. D. Dorst 120
W. B. Young 80
J. W. Brames Hrs. 40
A. G. Bradley 80
Wm. D. Dorst 120
W. B. Young 80
J. W. Brames Hrs. 40

Elsoran Leeper Hrs. 280
John Williamson 135
J. F. Looney 80
Jud. A. Christian 76
Nancy B. Montgomery 80
Virginia Miller 40
O. P. Jones 40
Chas. S. O. Moss 40
S. O. Brower 40
W. M. Looney 160
S. O. Brower 40
J. Miller 40
E. C. Price 80

John Williamson 135
J. F. Looney 80
Jud. A. Christian 76
Nancy B. Montgomery 80
Virginia Miller 40
O. P. Jones 40
Chas. S. O. Moss 40
S. O. Brower 40
W. M. Looney 160
S. O. Brower 40
J. Miller 40
E. C. Price 80

J. F. Looney 80
Jud. A. Christian 76
Nancy B. Montgomery 80
Virginia Miller 40
O. P. Jones 40
Chas. S. O. Moss 40
S. O. Brower 40
W. M. Looney 160
S. O. Brower 40
J. Miller 40
E. C. Price 80

W. M. Looney 160
S. O. Brower 40
J. Miller 40
E. C. Price 80



JUL 31 1918

58

E. OLIVE

ROBERSON AV.

N. JEFFERSON

COLLEGE ST.

PUBLIC SQUARE

ST. LOUIS

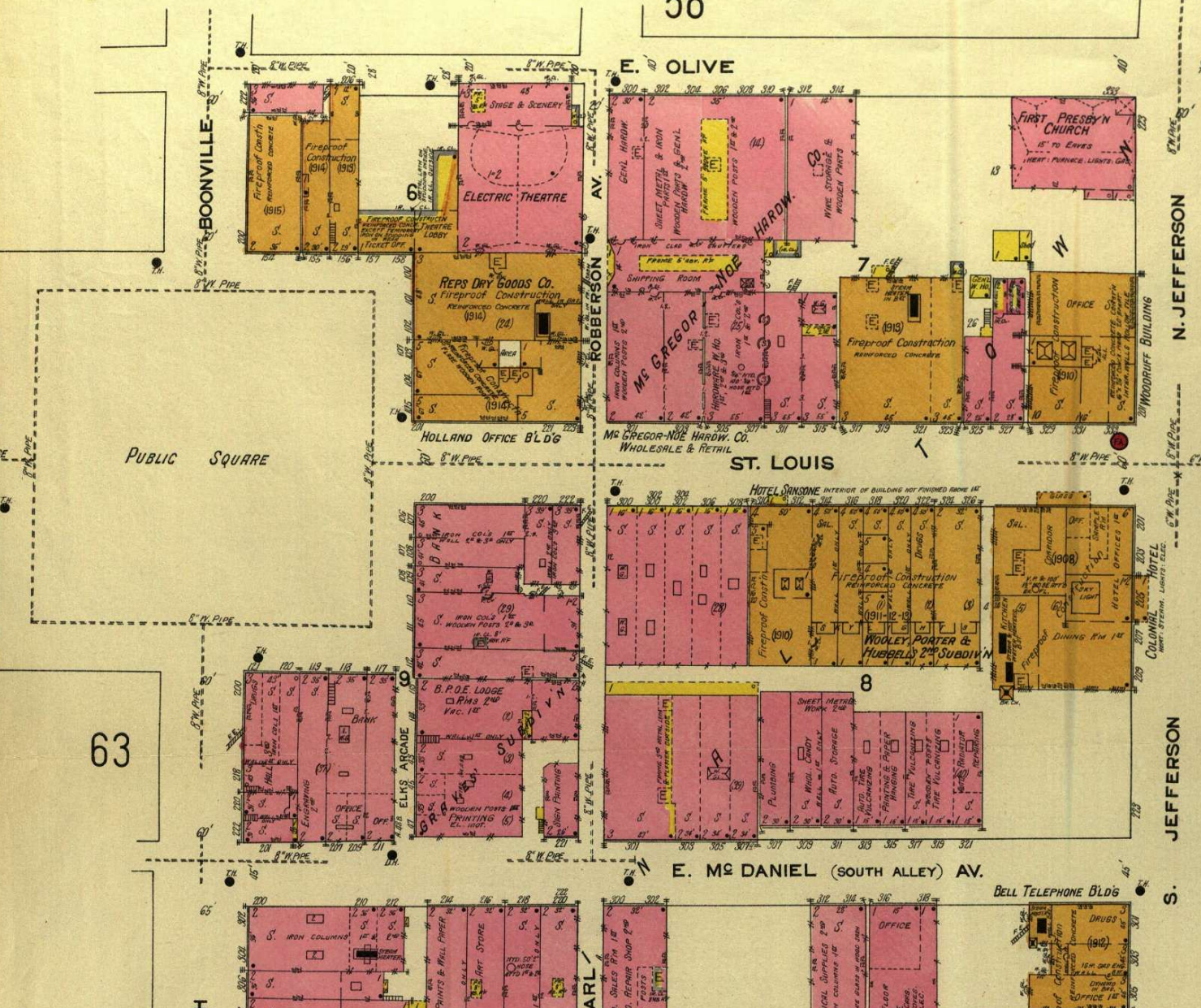
65

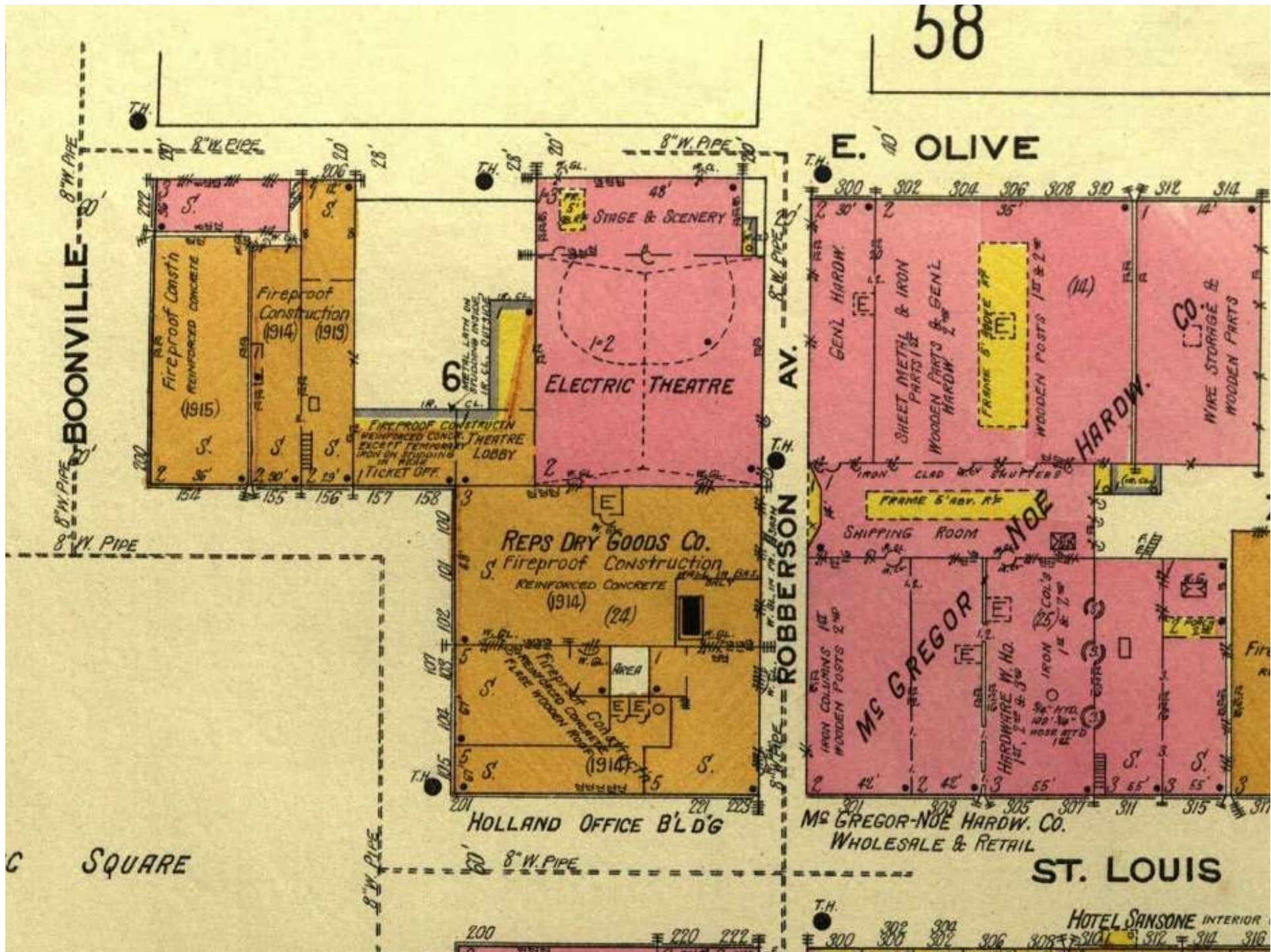
63

E. M^o DANIEL (SOUTH ALLEY) AV.

JEFFERSON

M^o DANIEL AV.
(PICKWICK ALLEY)





C SQUARE

E. OLIVE

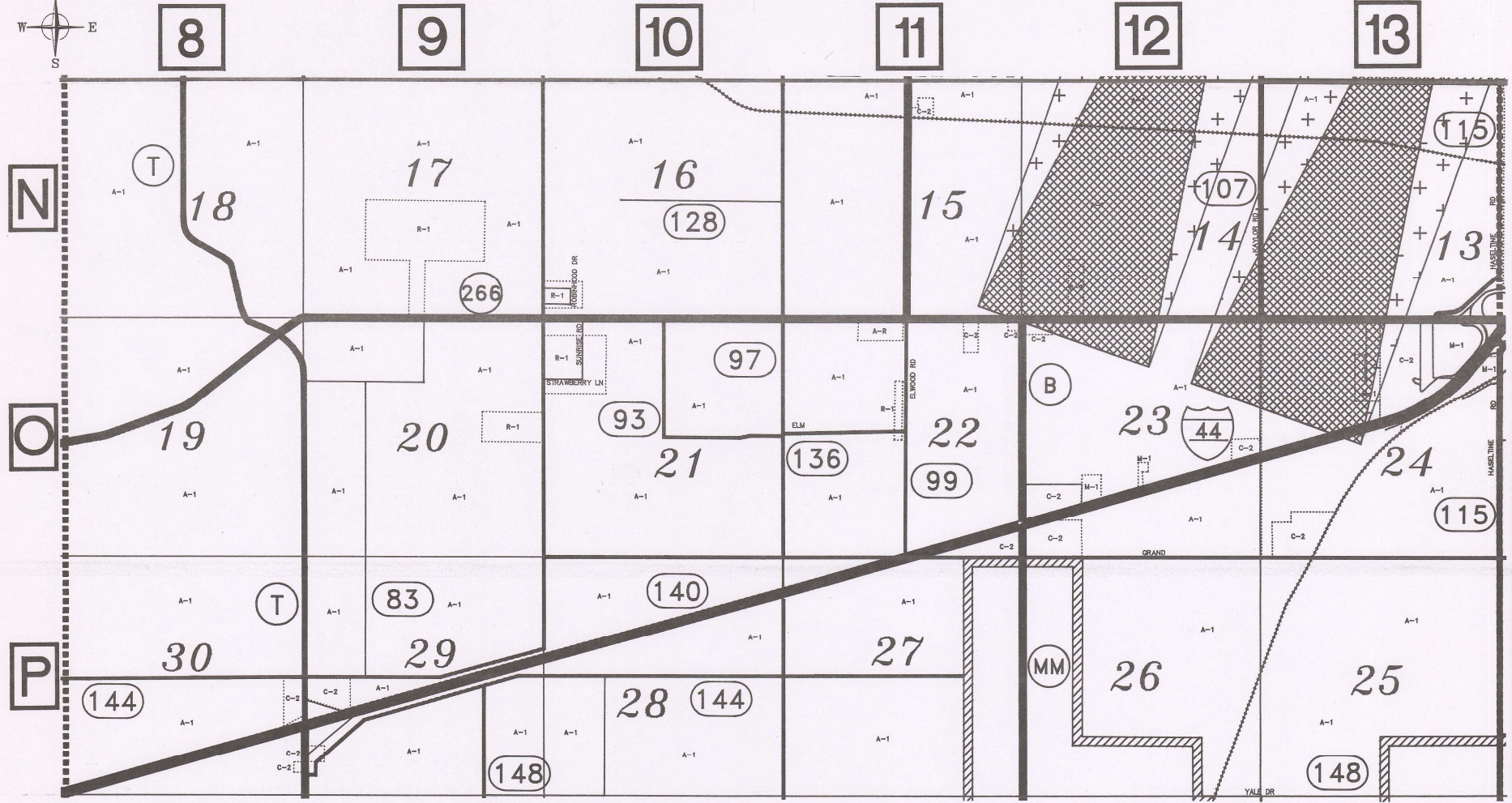
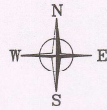
ROBBERSON AV.

ST. LOUIS

MC GREGOR NOE HARDWARE W. HO. WHOLESALE & RETAIL

HOTEL SANSONE INTERIOR

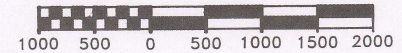
GREENE COUNTY ZONING DISTRICT GUIDE



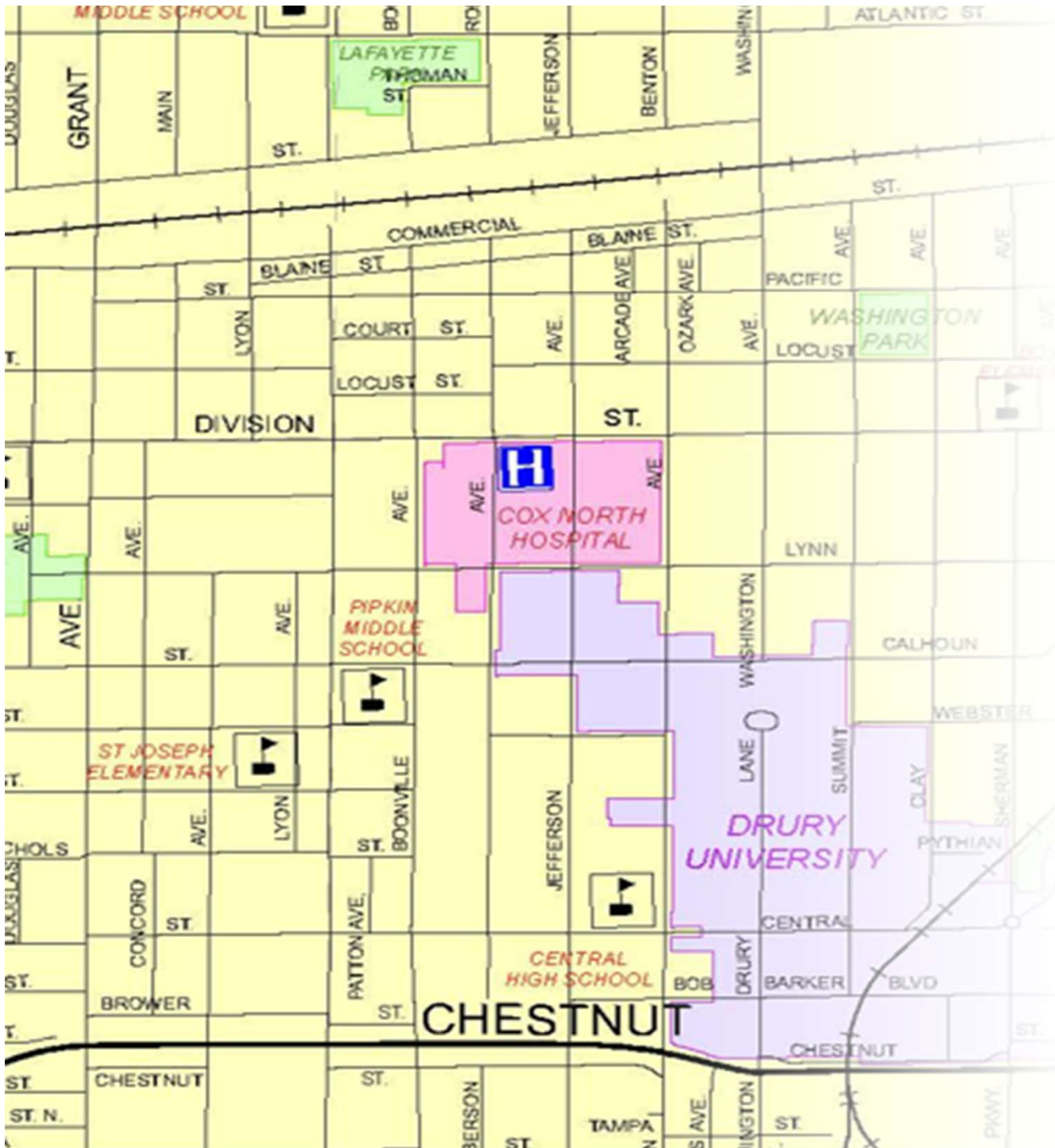
TOWNSHIP 29N
RANGE 23W
SECTIONS 13-30

A-1 AGRICULTURE DISTRICT
 A-R AGRICULTURE / RESIDENTIAL
 R-1 SUBURBAN RESIDENTIAL
 R-2 TWO FAMILY RESIDENTIAL
 R-3 MULTI FAMILY RESIDENTIAL
 R-4 MULTI FAMILY RESIDENTIAL
 O-1 PROFESSIONAL OFFICE DISTRICT

O-2 GENERAL OFFICE DISTRICT
 C-1 NEIGHBORHOOD COMMERCIAL
 C-2 GENERAL COMMERCIAL DISTRICT
 C-3 LIGHT COMMERCIAL DISTRICT
 M-1 LIGHT MANUFACTURING DISTRICT
 M-2 GENERAL MANUFACTURING DISTRICT
 PAD PLOT ASSIGNMENT DISTRICT



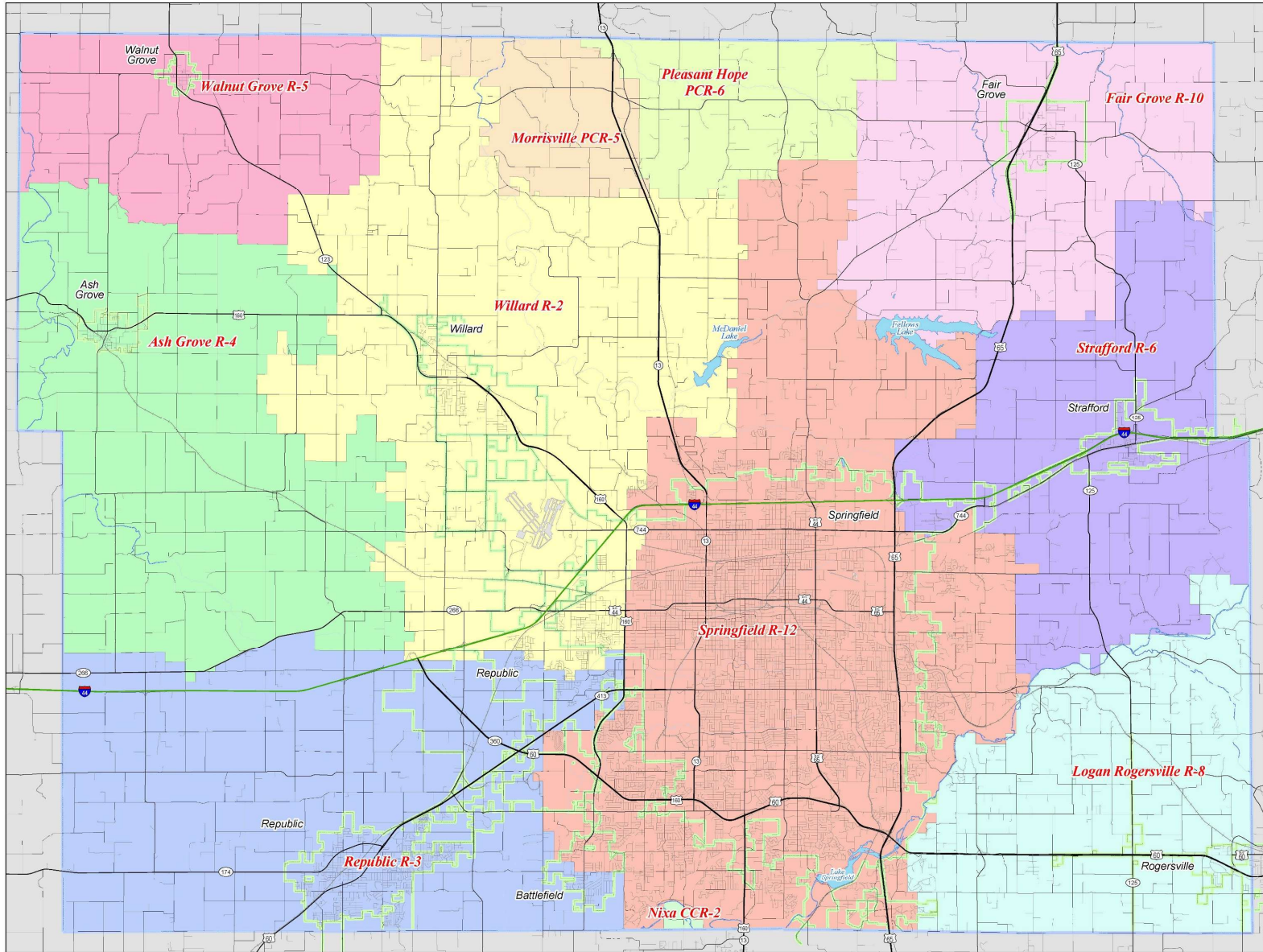
1" = 2000'



Unincorporated Building Permits

- Permit number
- Issue Date
- Permit type
- Parcel Number
- Address
- Driving Directions
- Subdivision Name
- Lot number





Greene County School Districts

School Districts
Major Roads
and Rural Streets
in Greene County



- Roads
- Railroads
- Streams
- Lakes
- County Line
- City Limits

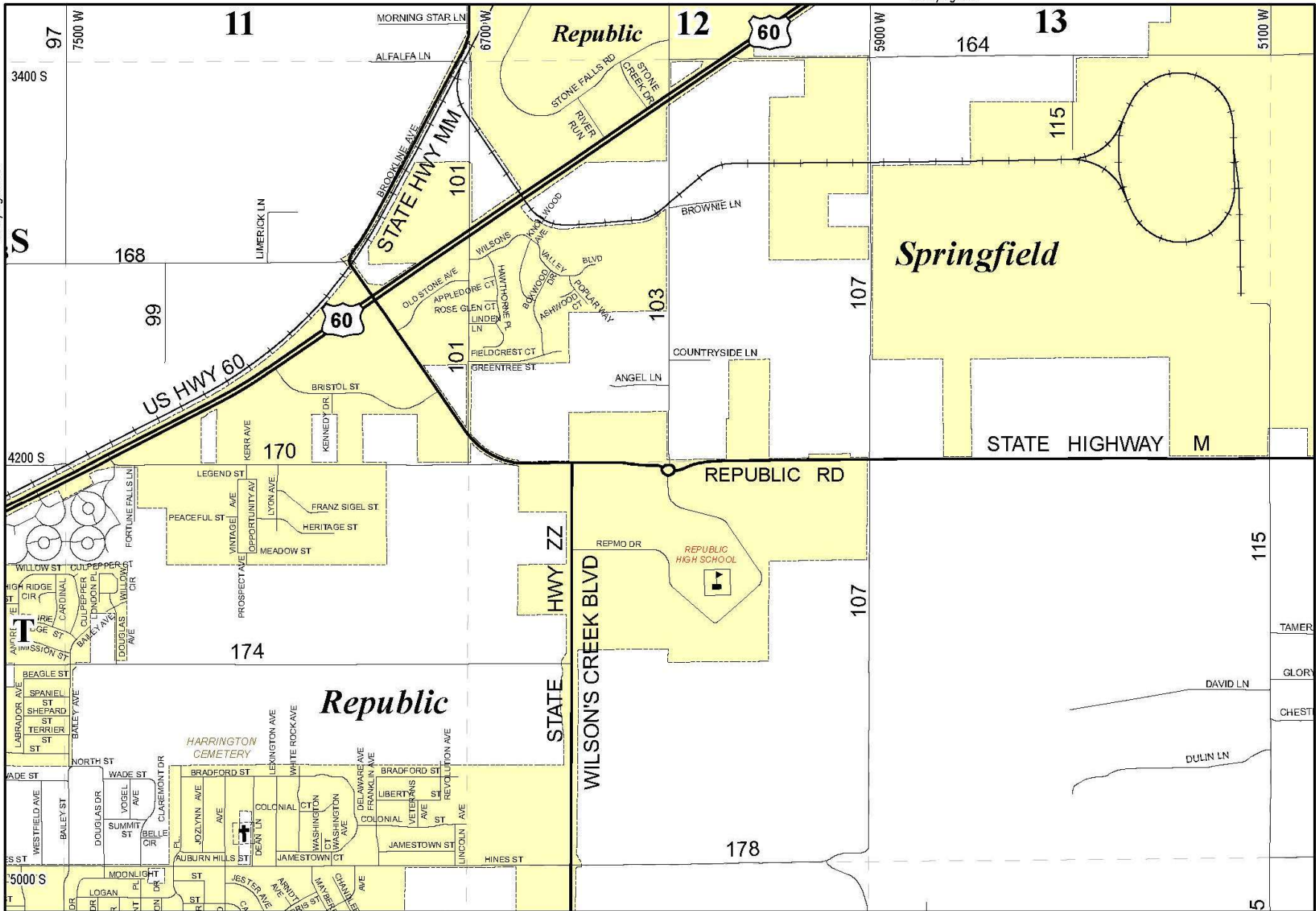


DISCLAIMER
All information on this map is provided "as is" for general information purposes only. Greene County and all the contributing data suppliers make no warranties, expressed or implied, concerning the accuracy, completeness, reliability or suitability of the data for any particular purpose.
Greene County and all other contributing data suppliers assume no liability associated with the use or misuse of this data.

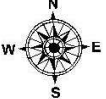


see page 105

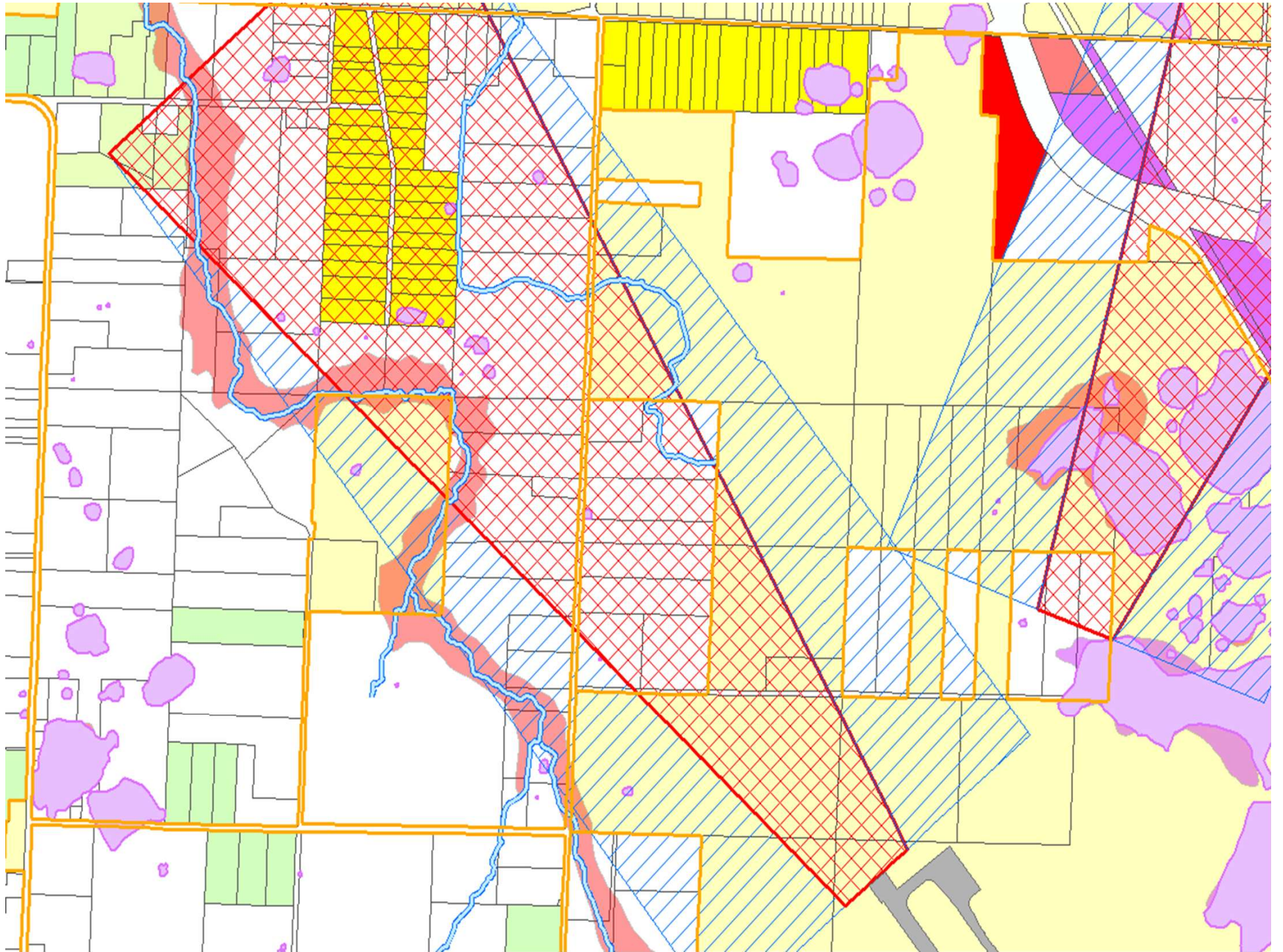
see page 102

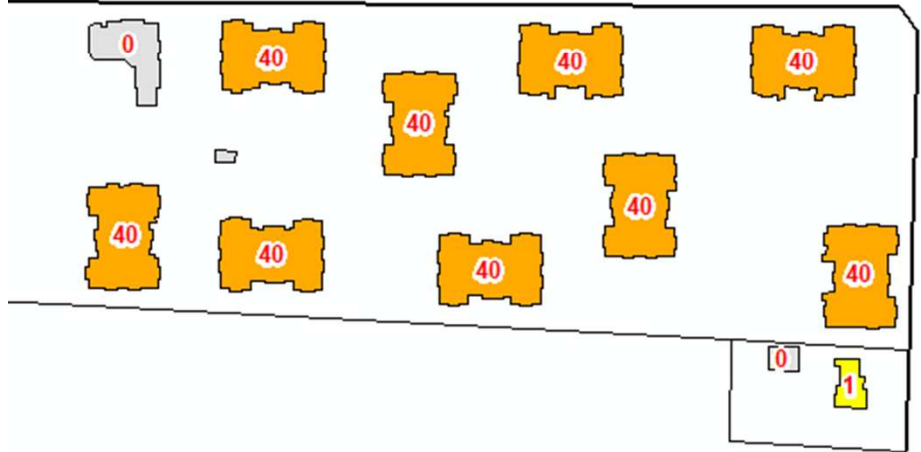
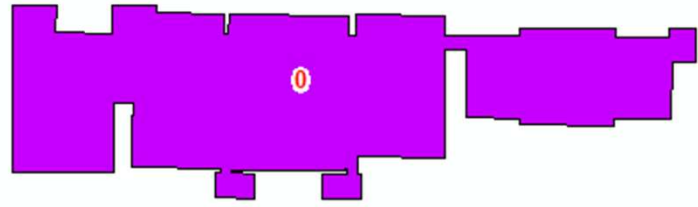
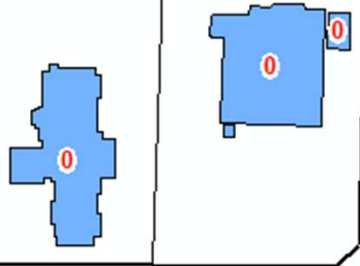
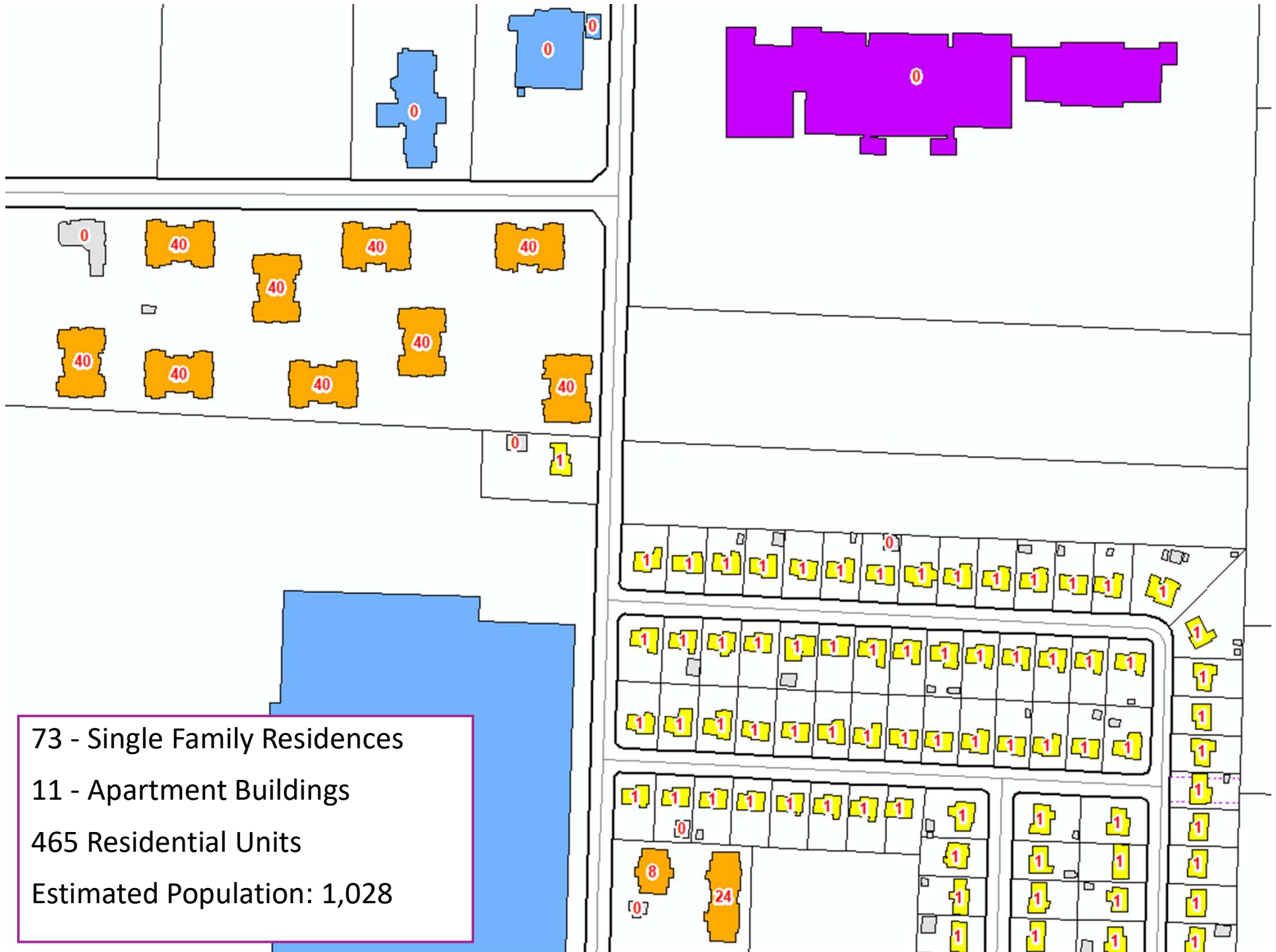


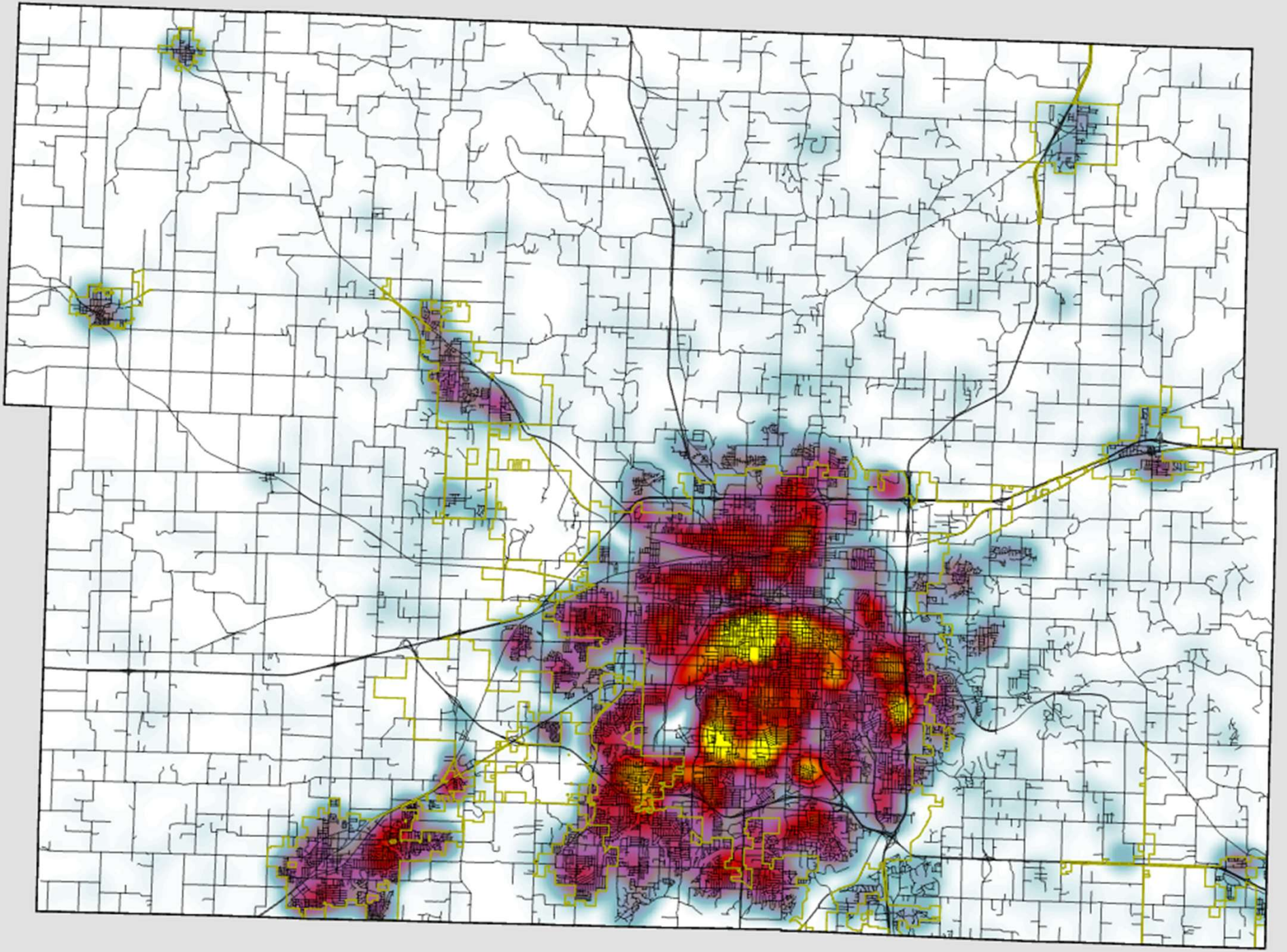
**Greene County
Road Atlas**

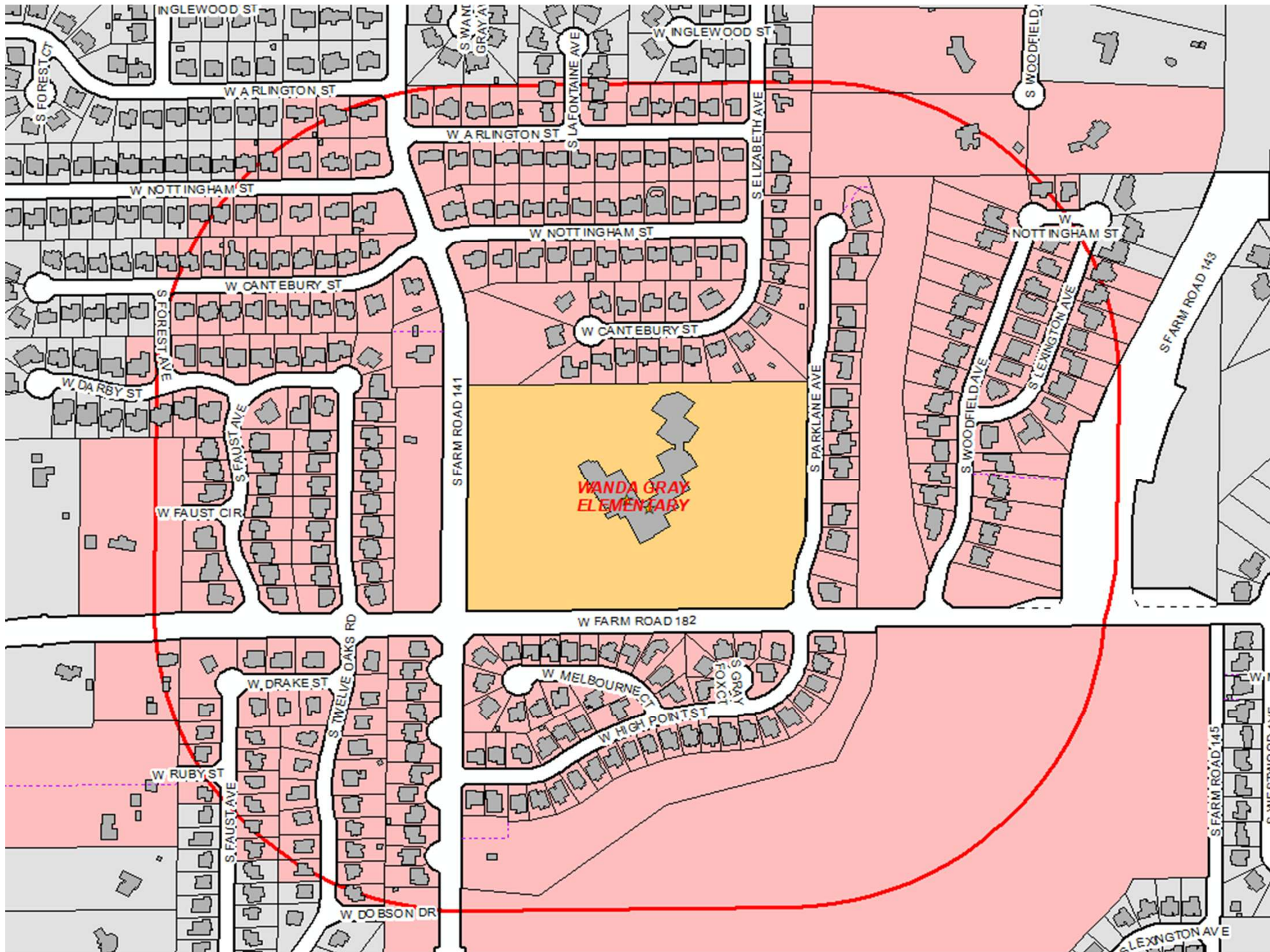


DISCLAIMER
 All information on the map is provided "as is" for general information purposes only. Greene County and all other contributing data suppliers make no warranties, expressed or implied, concerning the accuracy, completeness, reliability or suitability of the data for any particular purpose. Greene County and all other contributing data suppliers assume no liability associated with the use or misuse of this data.









Data Sharing

