

#voteready

HELLO!

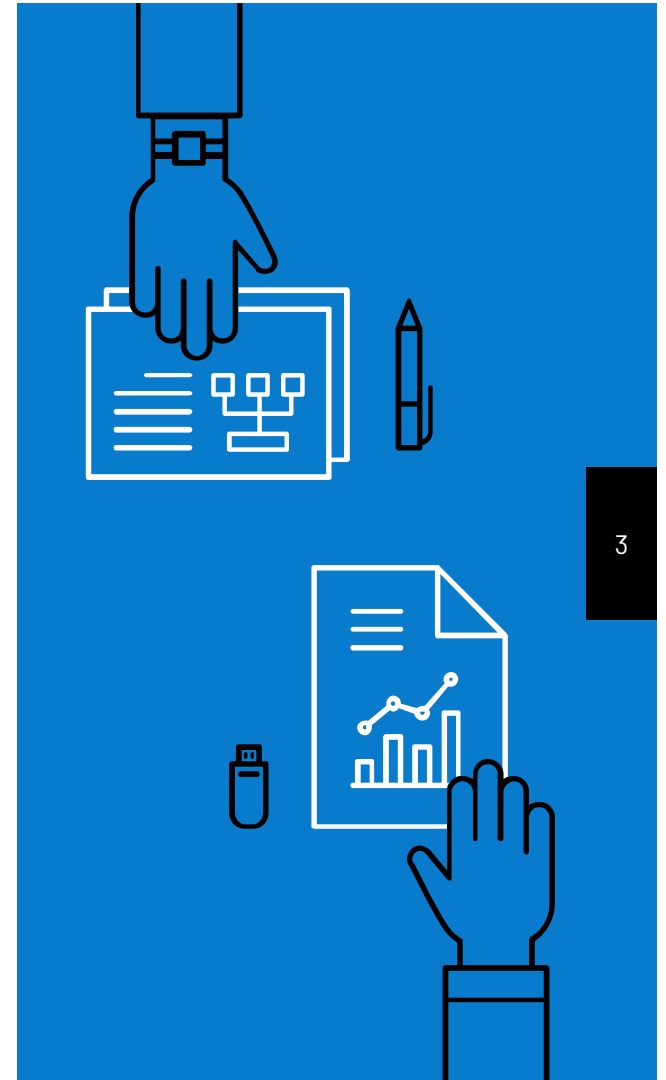
We are Chelsea Pointer
and Madison McFarland.

We are here to get
everyone [#voteready](#).

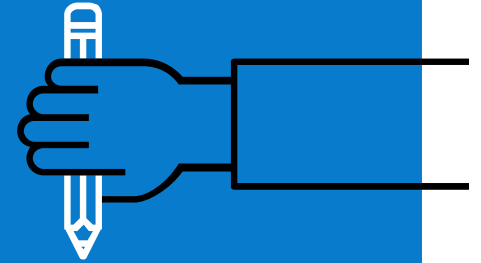
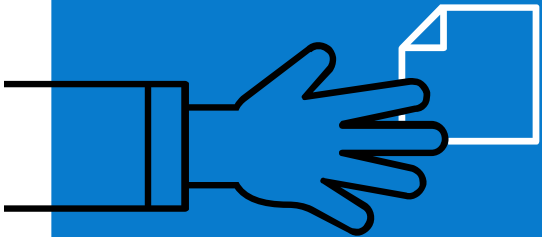


#voteready

- ▶ register
- ▶ prepare
- ▶ vote



1.
register



Voter Registration Basics

Qualifications:

- 17½ to register and 18 to vote
- US citizen
- Missouri resident

Identification for Register to Vote:

- Current Missouri driver's license or non-driver's license
- Current utility bill, bank statement, paycheck, government check or document
- Current ID issued by a Missouri institution of higher education (university, college, vocational or technical)
- Current Military ID, Passport, out-of-state driver's license
- Social Security card, birth certificate
- Native American tribal document or other proof of citizenship



Where to register in Greene County?

- Any Greene County library
- Greene County Clerk's office
- DMV
- Family Services
- Online at sos.mo.gov
- A variety of other locations listed on our website: vote.greencountymo.gov

Voter Registration Basics: Registration Numbers

206,015 Registered Voters in Greene County

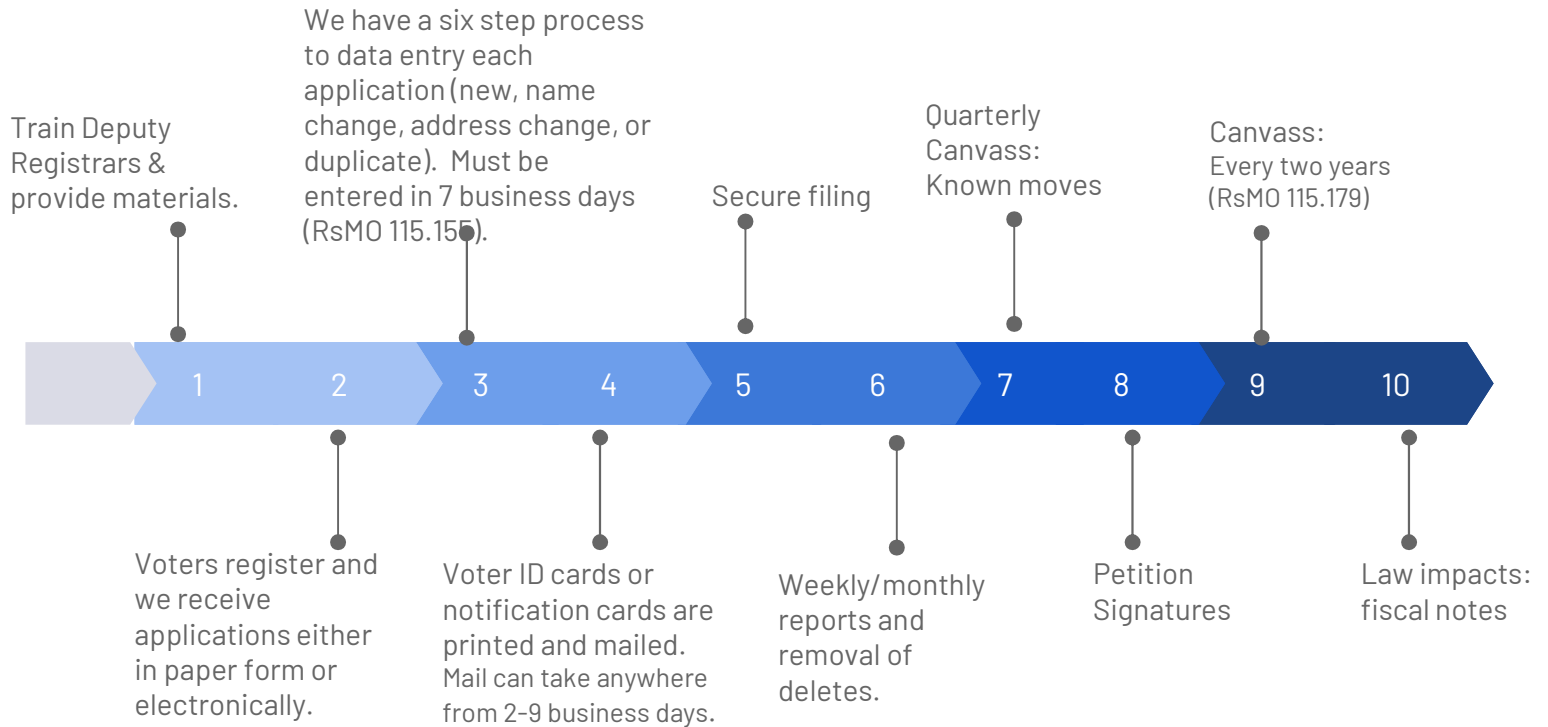
173,178 Active Voters

32,837 Inactive Voters

- Average new registrations a month (2023): 692/month
- Average address/name changes a month (2023): 3,963/month
- New Registrations in 2022 Election Year: 13,147
- New Registrations in 2020 Election Year: 25,984
- In an election year, we can process well over 100,000 address changes, name changes, and duplicate applications.

Voter Registration Process

Voter Registration Team:
Coordinator, Clerk II, Clerk I and two full-time temporary employees.



IMPACT:

Law Changes of Impact

Register by State

- In Missouri, we register by state now instead of by county.
- New registrations must be completed by the 4th Wednesday prior to an election. If registering by mail, your voter registration must be postmarked on the 4th Wednesday prior to the election.
- You can change your address within the county or from one county to another, up to or even on Election Day.

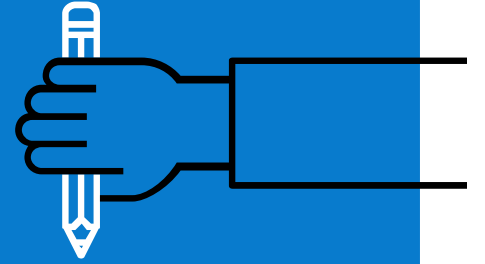
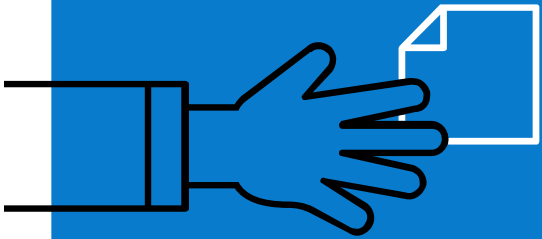
Select a Political Party

You may now select a political party when registering to vote. It is not required, and it is public record. You are free to change it at any time, but a signature is required from the voter when making any changes to a voter record.

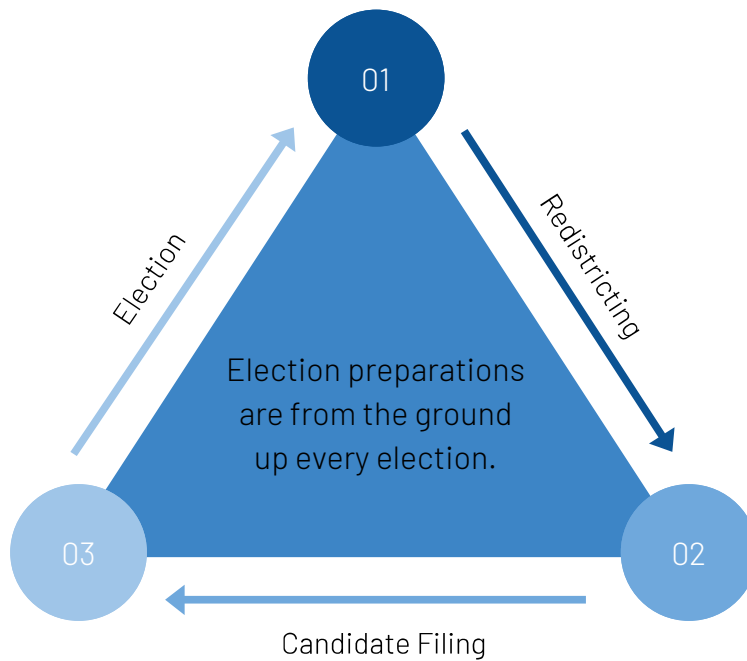
Missouri still has what is known as an “open” primary. In an open primary, voters may select a ballot for any party and vote for those candidates. Missouri does not require voters to “affiliate” with any political party when they register.



2.
prepare



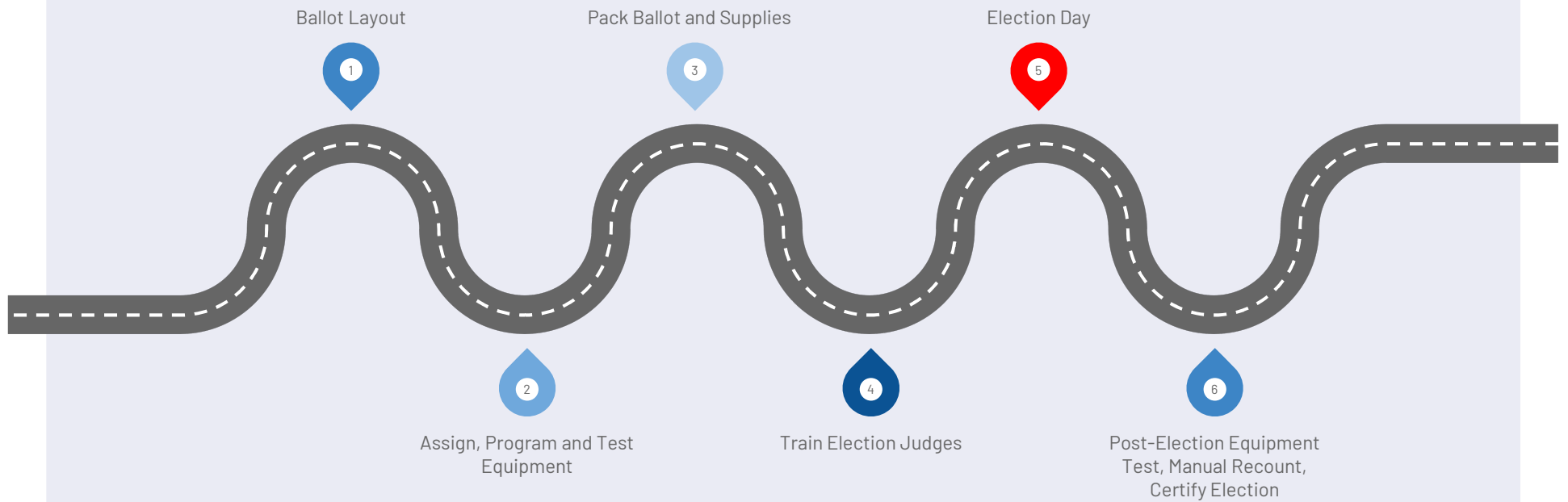
REDISTRICTING TO ELECTION



FAST FACTS:

- 5,498 Block Address Ranges were adjusted during the most recent redistricting.
- 166 candidates filed with the Greene County Clerk's Office for election in 2022.
- Early election cost estimates for 2024 elections range from approximately \$400,000 to \$588,000.

ELECTION BUILD ROADMAP



IMPACT: POST-ELECTION PREP

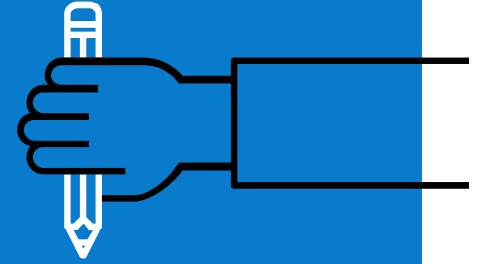
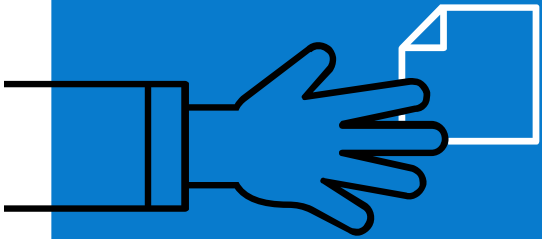
Before each Election Day, even the post-election preparations occur.

After each Election Day, election equipment is tested for accuracy, 5% of polling locations are manual recounted, and the Verification Board meets.

What's the best part? These are open to the public!



3. vote



BALLOT ACCESS

No Excuse Absentee Voting

Beginning in 2022, two weeks prior to each election, registered voters can cast an absentee ballot without a reason in-person.

We have two locations for No Excuse Absentee Voting in the County.

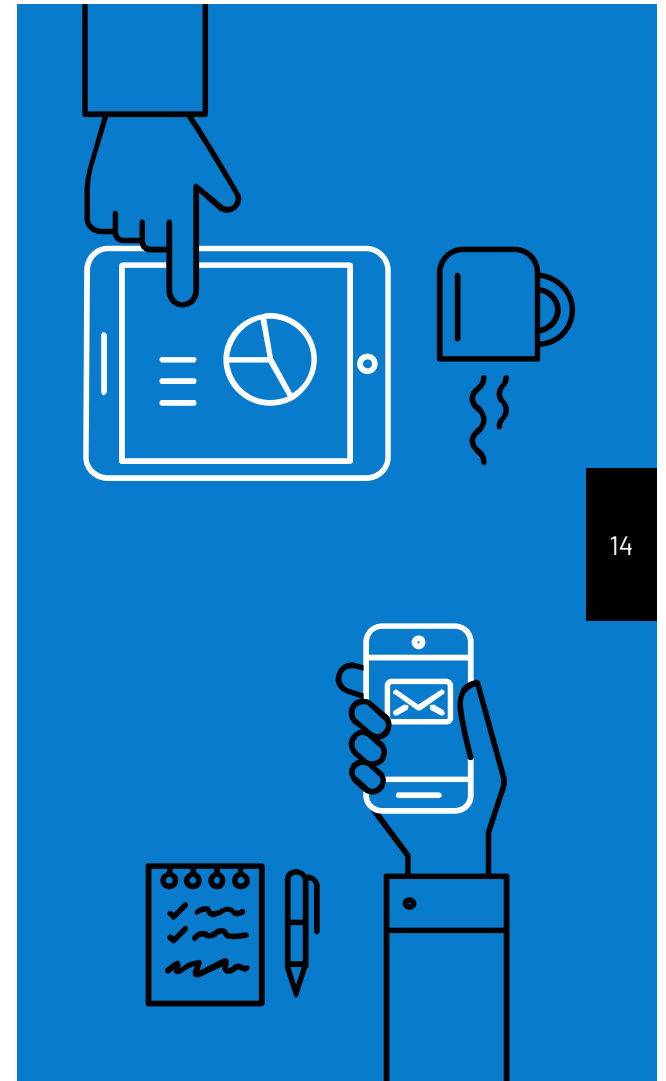
Absentee by Mail

Voters with a legal reason can vote absentee by mail.

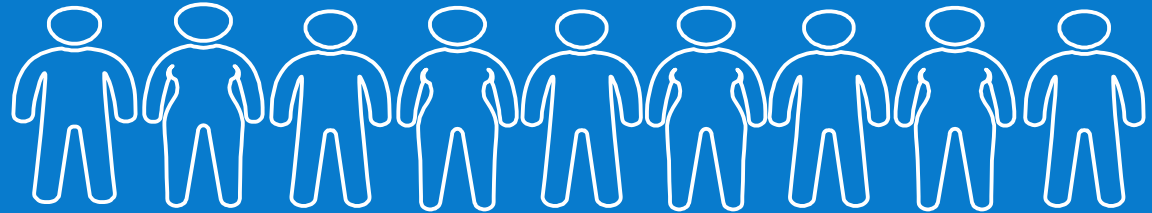
Election Day Polling Locations

Greene County was one of the first election authorities in Missouri to have Central Polling Locations.

Central Polling Locations are in addition to the 79 assigned locations throughout the County.



GET INVOLVED



	Election Judge	Election Night	Hourly (Testing, Hospital Teams, Absentee Ballot Prep)
Time Commitment	Election Day (5a to after Polls Close) Two Training Courses (~4 hours)	Election Night (7p to 10p)	As Needed
Pay	\$115 - \$300	\$70 - \$95	\$20.55 an hour
Number of Positions	550 - 650	45 - 70	150 - 190

IMPACT: UPCOMING ELECTIONS

April 2, 2024 Election

Municipal Election for local cities, school, fire and water districts.

August 6, 2024 Election

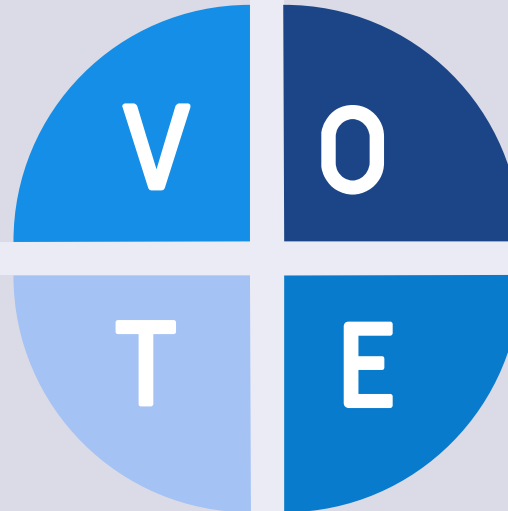
General Primary for Federal, State and County offices.

General Election for Federal (including President), State and County offices.

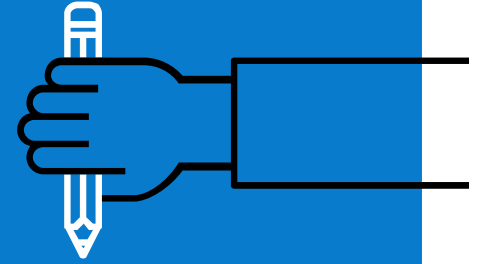
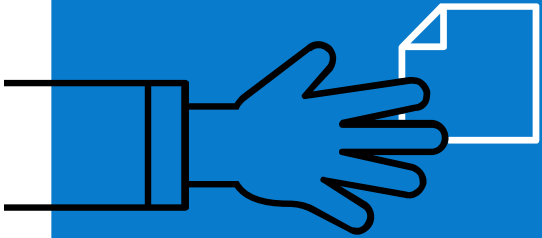
November 5, 2024 Election

Missouri is going back to the caucus system.

Where did the Presidential Preference Primary go?



impact



THANKS!

Any questions?

You can find us at:

cpointer@greencountymo.gov

mmcfarland@greencountymo.gov

vote.greencountymo.gov

Historic Courthouse Room 113

