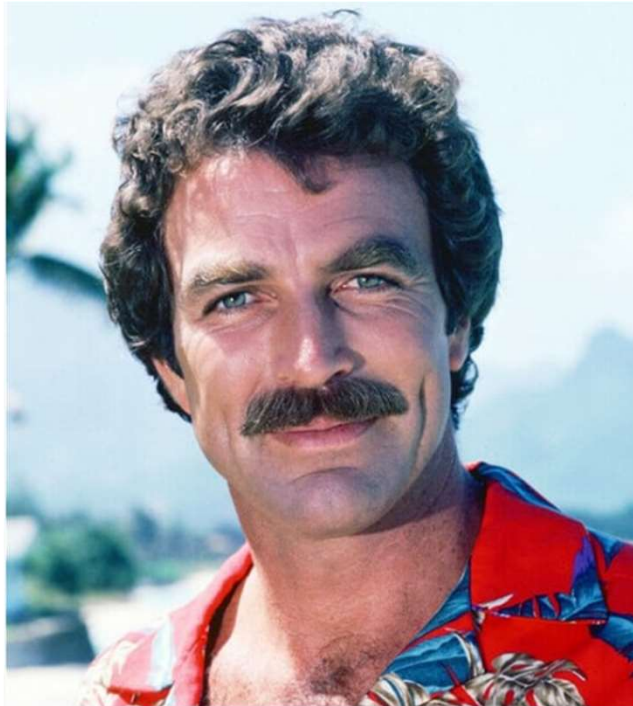


Greene County Collector



Greene County Collector: Allen Icet Appointed in 2021



Collections by the Numbers (CY 2022)

Real Estate	\$268,934,387
NIDS/CIDS	
Nuisance Liens	
TIFs	
PACE	
Personal Property	\$ 66,305,007
PILOTS (Ch 353)	\$ 192,050
RRUs State & Local	\$ 5,399,932
Merchant License	\$ 103,850
Auctioneer License	\$ 660
Sewer	\$ 61,240
Penalty & Interest	\$ 4,405,936
<u>TOTAL Collected:</u>	\$346,184,780

Greene County Collector: Allen Icet Appointed in 2021



Collections by the Numbers (CY 2022)

Real Estate	\$268,934,387
NIDS/CIDS	
Nuisance Liens	
TIFs	
PACE	
Personal Property	\$ 66,305,007
PILOTS (Ch 353)	\$ 192,050
RRUs State & Local	\$ 5,399,932
Merchant License	\$ 103,850
Auctioneer License	\$ 660
Sewer	\$ 61,240
Penalty & Interest	\$ 4,405,936
<u>TOTAL Collected:</u>	\$346,184,780

Greene County Collector: Allen Icet Appointed in 2021



Collections by the Numbers (CY 2022)

Real Estate	\$268,934,387
NIDS/CIDS	
Nuisance Liens	
TIFs	
PACE	
Personal Property	\$ 66,305,007
PILOTS (Ch 353)	\$ 192,050
RRUs State & Local	\$ 5,399,932
Merchant License	\$ 103,850
Auctioneer License	\$ 660
Sewer	\$ 61,240
Penalty & Interest	\$ 4,405,936
<u>TOTAL Collected:</u>	\$346,184,780

December \$231,977,897

Revised Statutes of Missouri

52.015 “...terms expire on the first Monday in March of the year in which they are required to make their last final settlement for the tax book collected by them.’

52.110 “shall keep ... office at the county seat, except when meeting taxpayer;....provided, that...in all counties...in which there is no bank...located at the county seat...and...two or more terms of the circuit courts are held each year in some other town...the county collector may...keep his office in such town...”

52.185 Shall establish an adequate system of bookkeeping and accounting format of tax books, form and manner of tax bills.

52.230 Shall mail a statement of all real and tangible personal property taxes due and assessed on the current tax books 30 days prior to delinquent date (December 31).

Collector *(continued)*

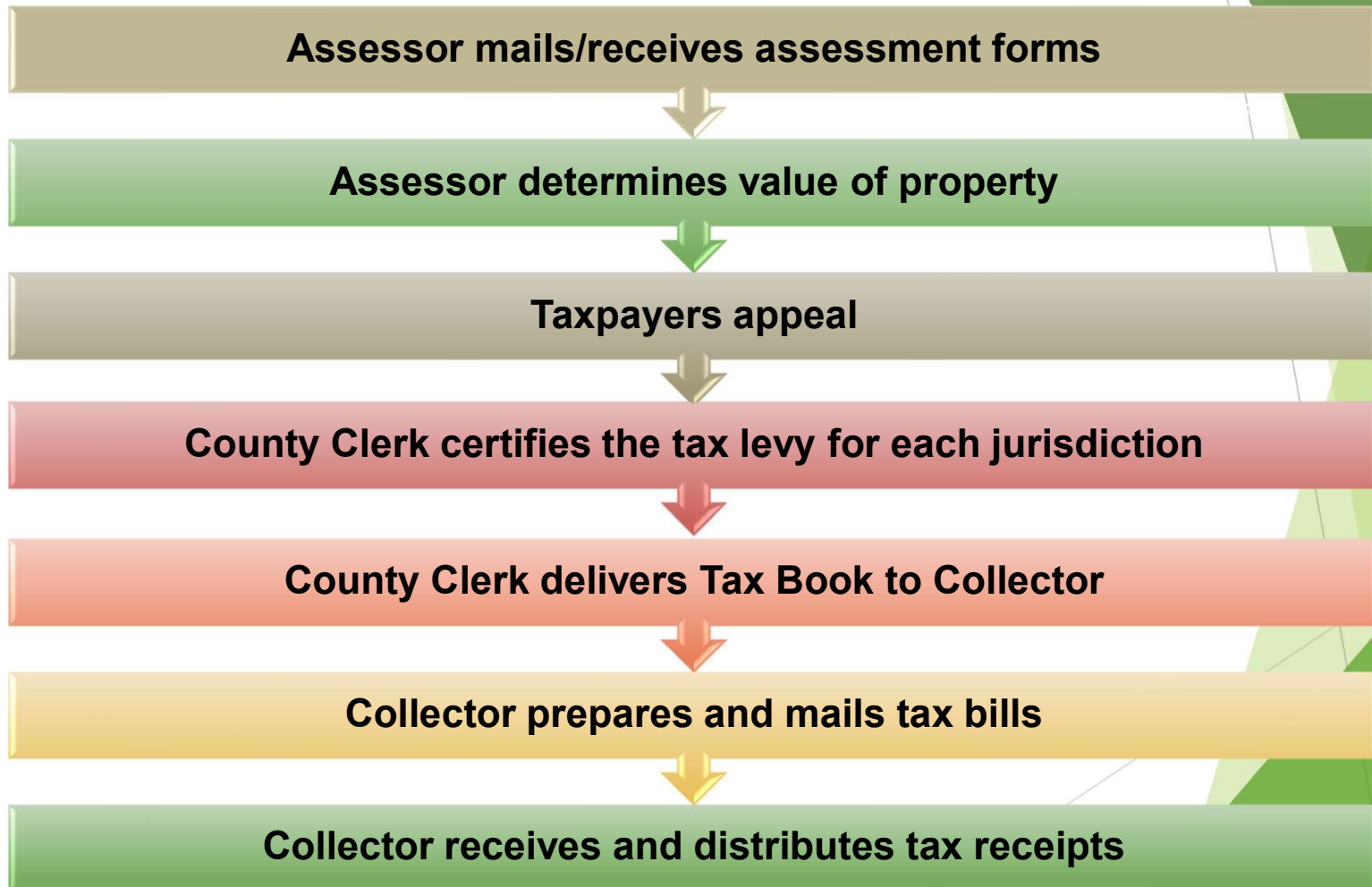
52.260 “The Collector shall collect on behalf of the county...fees for collecting all state, county, bridge, road, school, back and delinquent, and all other taxes...” Fee for Greene County is 1% of taxes collected and is deposited in the general fund.

52.290 A penalty of 9% is charged for collection of delinquent and back taxes. 2/9 of this goes to the County general fund; 2/9 goes to the Collector’s Tax Maintenance Fund; 5/9 goes to the County Employee’s Retirement Fund

52.312 Tax Maintenance Fund to be used for the purpose of funding additional costs and expenses incurred in the office of collector, including for training, purchasing new or upgrading IT equipment or other essential administrative expenses.

52.317 Any money remaining in the Tax Maintenance Fund as of December 31st is limited to an amount equal to the previous year's approved budget for the office of collector. Any money in excess of this amount is transferred to county general revenue by the following

General Process for Creation of Tax Records



Taxing Districts

Below is a list of the School Districts, Fire Districts, Cities, and other taxing jurisdictions for which the Collector's Office collects property taxes. Please note that you only pay taxes on the districts that apply to you, not every levy for every district.

Greene County Taxing Districts

	2022	2021	2020	2019	2018	2017	2016	2015	2014
State Of Missouri	0.0300	0.0300	0.0300	0.0300	0.0300	0.0300	0.0300	0.0300	0.0300
County General Revenue	0.1040	0.1075	0.1248	0.1177	0.1218	0.1290	0.1137	0.1160	0.1288
Road	0.1040	0.1075	0.1248	0.1177	0.1218	0.1290	0.1137	0.1160	0.1288
Co Dev Disability Programs	0.0462	0.0461	0.0467	0.0463	0.0473	0.0471	0.0473	0.0468	0.0474

Inform and Educate

The background features abstract, overlapping geometric shapes in various shades of green, ranging from light lime to dark forest green. These shapes are primarily located on the right side of the slide, with some extending towards the center. The overall aesthetic is clean and modern.

Greene County, MO Collector of Revenue

Allen Icet



"Our goal is to serve the constituents of Greene County with the highest of standards." - Allen Icet

Overview of the Missouri Tax Process



How to PAY your 2022 taxes



Attention Homeowners who owe two or more years of real estate taxes as of May 1, 2023

What does “subject to tax sale” mean?

- On May 1st, an additional \$100 was added to the balance of taxes owed to cover the fee for a required title search by the Collector’s Office.
- Through June 30th, online payments will be prohibited, but can be reinstated with approval by calling the Collector’s Office at 417-868-4036. Just ask to speak to a tax sale specialist.
- On July 1st, a \$90 advertising fee will be added to the balance of taxes owed.
- July 1st - August 25th payments must be in the form of certified funds only. This means cash or cashier’s check. Online payments are strictly prohibited during this time.
- August 28th at 10:00 am is the tax sale
 - A tax sale is an auction to place a lien against a property. The homeowner does not lose any rights or ownership on this day.

Our specialists are reaching out to owners of delinquent properties. If this applies to you and you have not heard from us, please give us a call at 417-868-4036 so we can discuss in detail.

**Greene County Collector
Allen Icet**

A Collector
Crumb