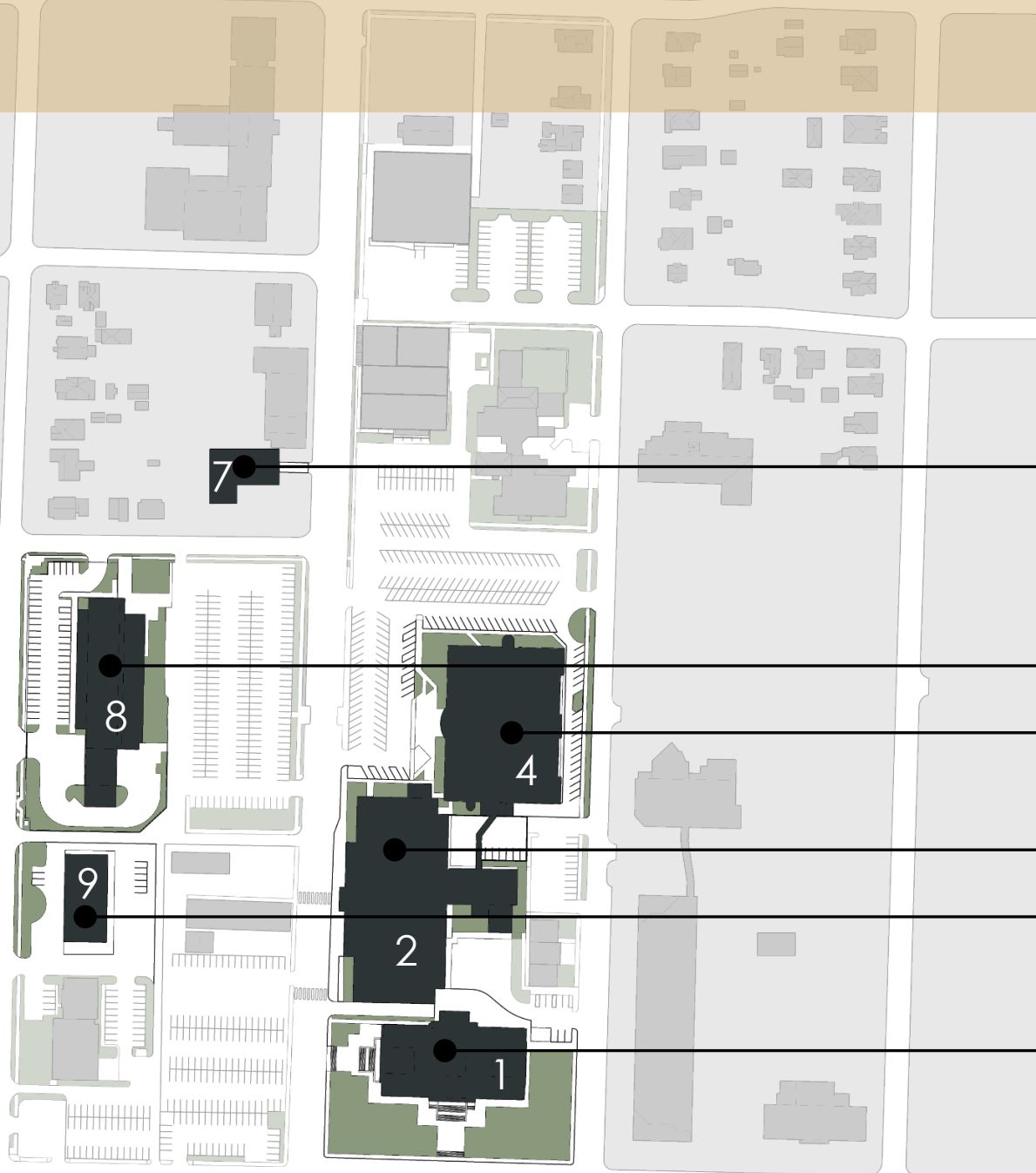




GREENE COUNTY JUDICIAL CENTER

# SITE PLAN

## SHERIFF VACATES CAMPUS



REMOVE TEMPORARY EVIDENCE STORAGE.

BASEMENT LEVEL OF PSC.

FIRST LEVEL OF JUDICIAL COURTS.

JUSTICE FACILITY.

REMOVE TEMPORARY JAIL.

THIRD LEVEL OF HISTORIC COURTHOUSE.

- |  |                                     |
|--|-------------------------------------|
| 1. Historic Courthouse                             | 7. Temporary Evidence Storage       |
| 2. Former Jail                                     | 8. Public Safety Center             |
| 3. Administration Building                         | 9. Temporary Jail                   |
| 4. Judicial Courts Facility                        | 10. Cox Tower                       |
| 5. New Addition – Family Courts Building           | 11. Prosecuting Attorney Expansion  |
| 6. Juvenile Court Services & Family Court Building | 12. New Juvenile Detention Facility |

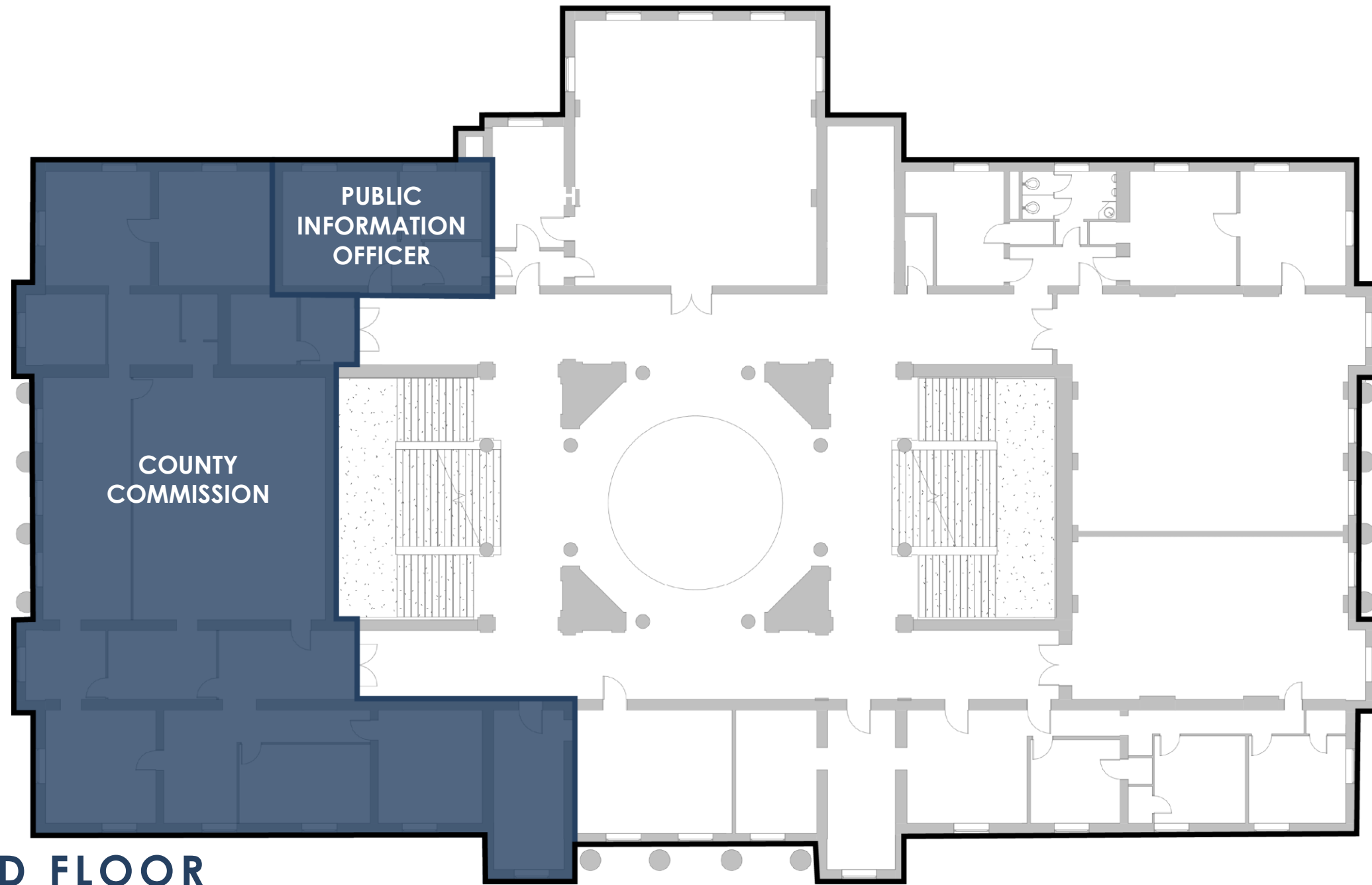
## FACILITY ANALYSIS **SUMMARY**

1. Met with the office holders & department heads.
2. Reviewed the spaces.
3. Reviewed the budget.

## FACILITY ANALYSIS **OBJECTIVES**

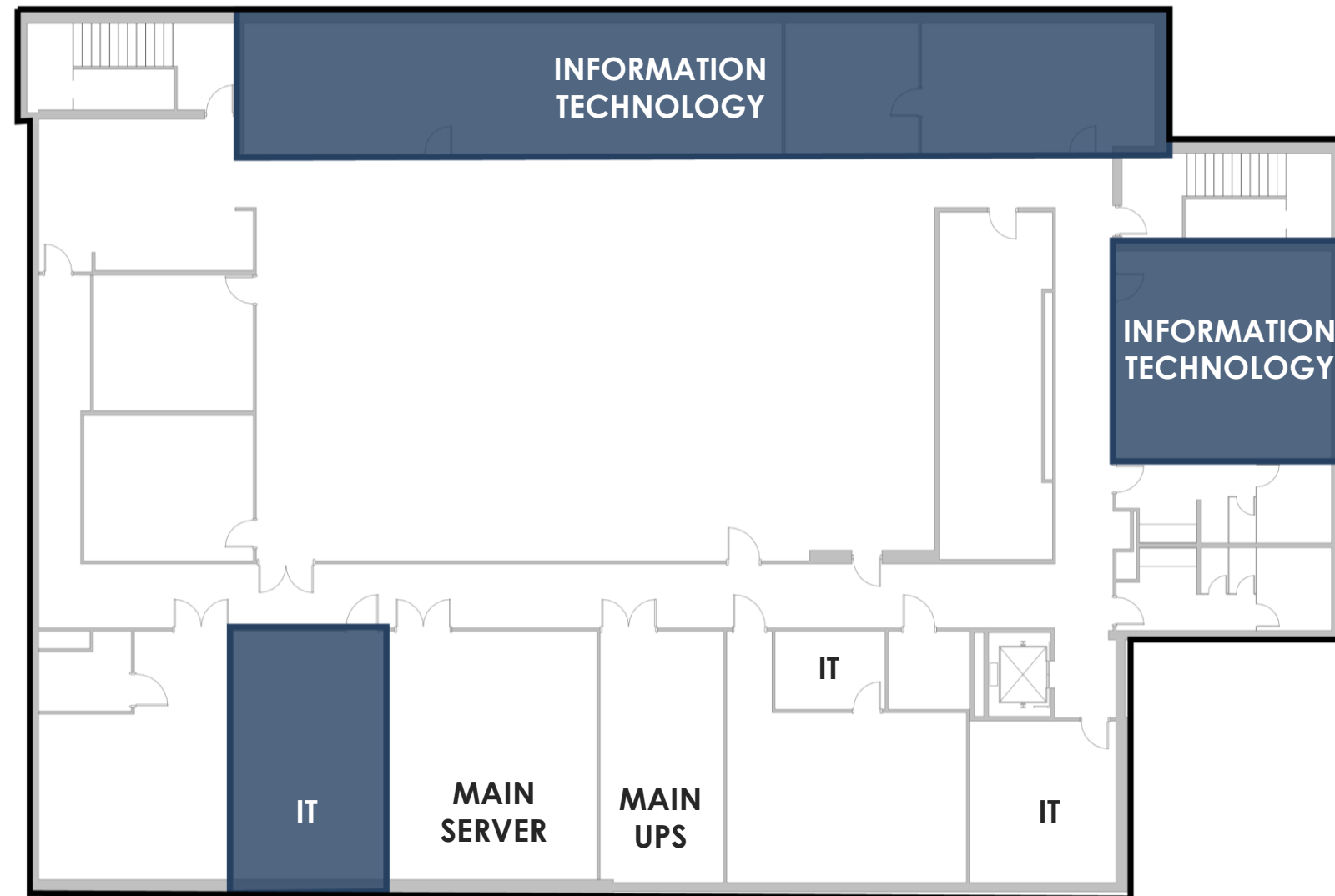
1. Pave west parking lot.
2. Meet the needs of the office holders.
3. Efficiently utilize space.
4. Consolidate offices on campus.
5. Meet the county's budget.

# HISTORIC COURTHOUSE



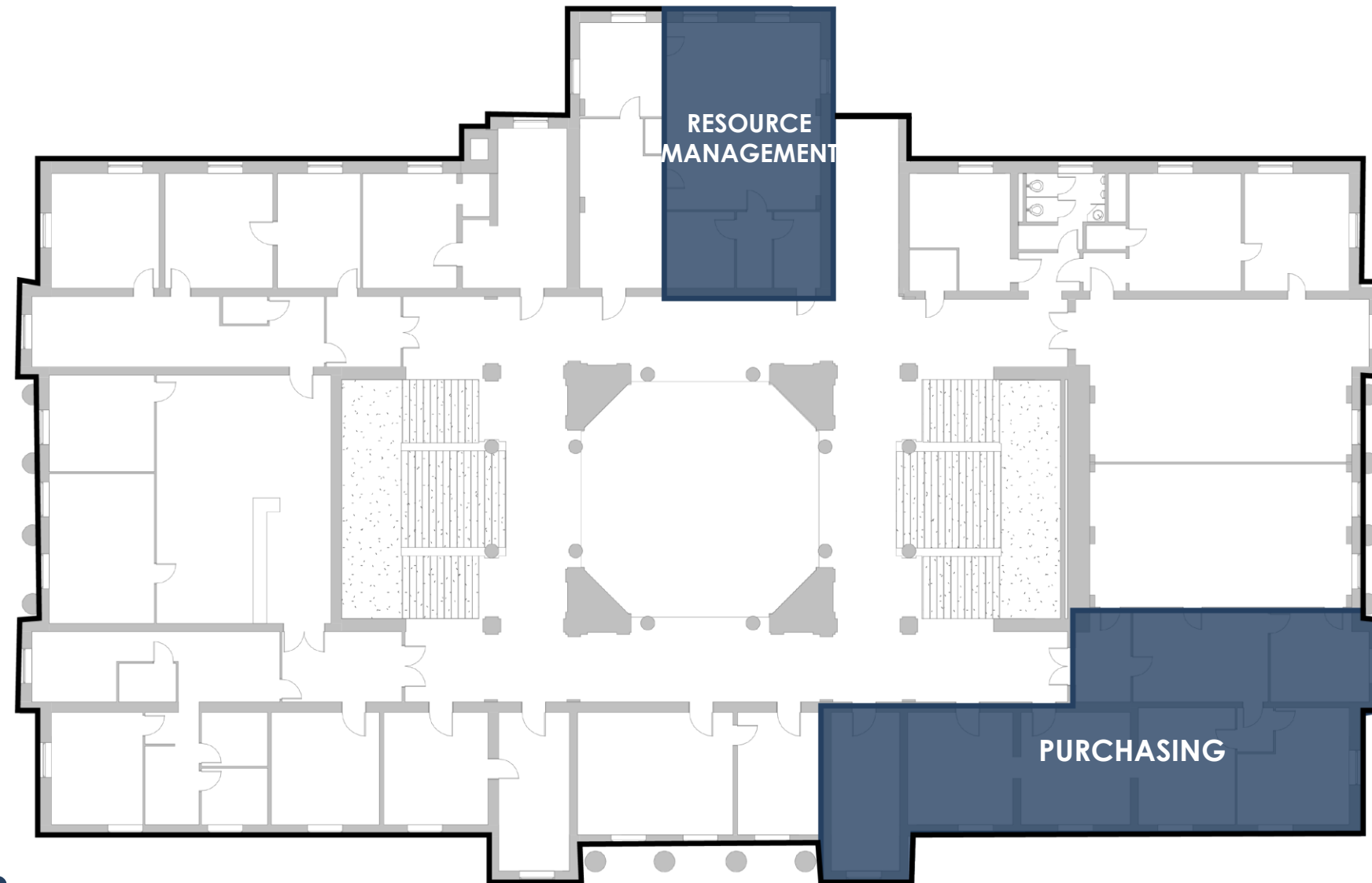
**SECOND FLOOR**

# PUBLIC SAFETY CENTER



**BASEMENT LEVEL**

# HISTORIC COURTHOUSE



**THIRD FLOOR**

# ADMINISTRATION BUILDING

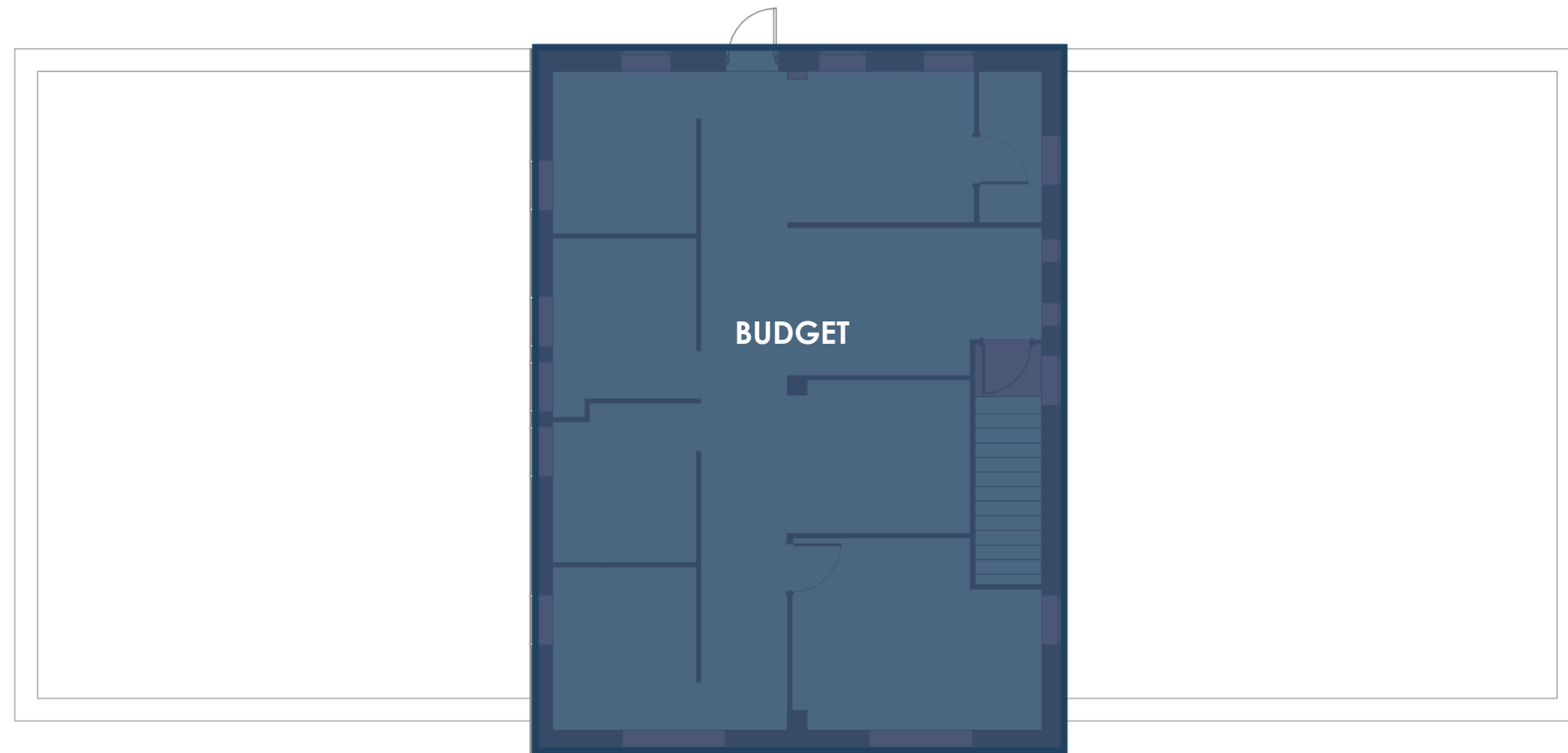


**FIRST FLOOR**



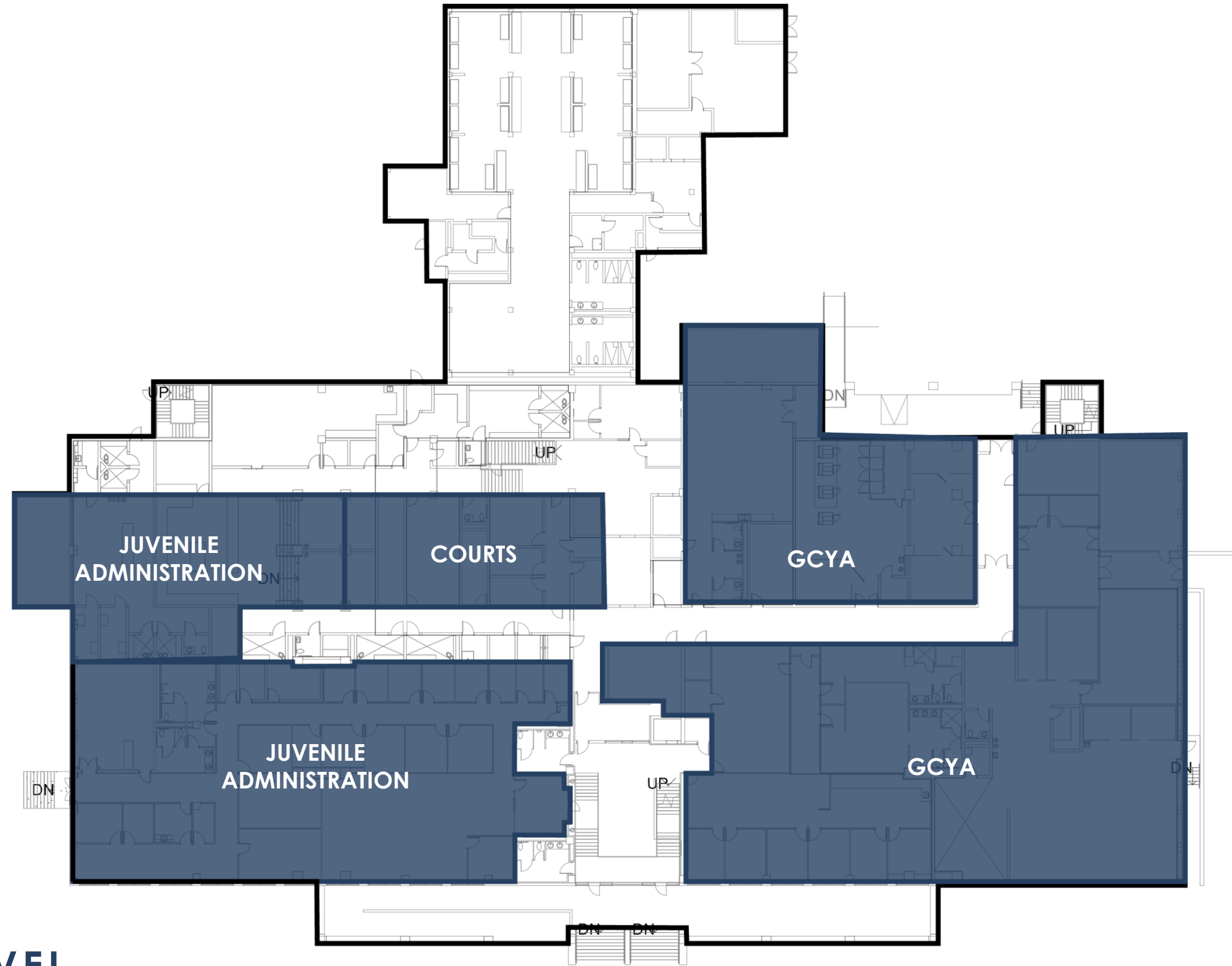


# ADMINISTRATION BUILDING



**SECOND FLOOR**

# JUSTICE CENTER – OLD JAIL



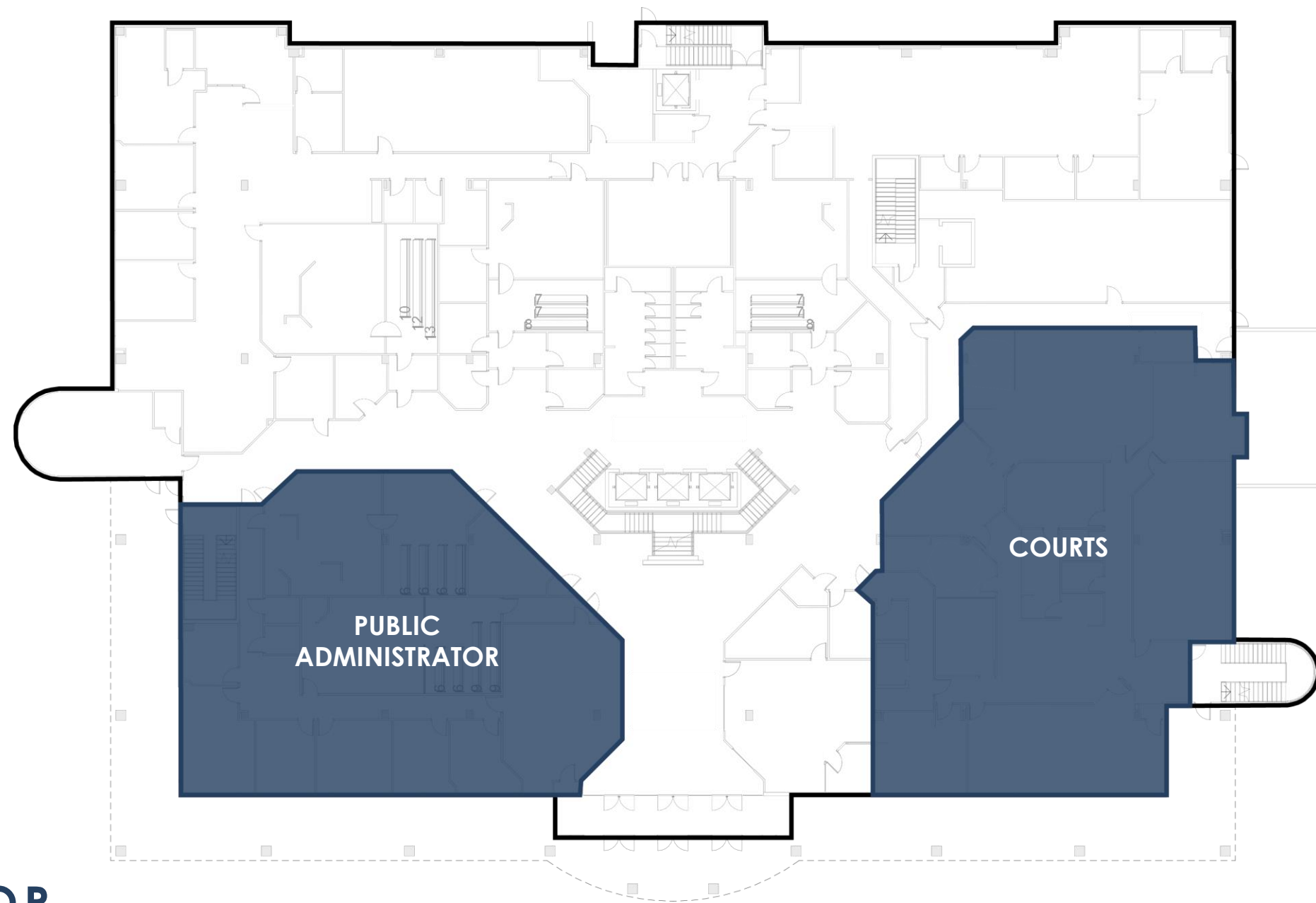
**FIRST LEVEL**

# JUSTICE CENTER – OLD JAIL



**SECOND LEVEL**

# JUDICIAL COURTS FACILITY



**FIRST FLOOR**



E Webster St

N Robberson Ave

Greene County  
Judicial Center

Secure Lobby

Greene County  
Family Courts

E Central St

N Boonville Ave





GREENE COUNTY JUDICIAL CENTER





G C Y A





GREENE COUNTY FAMILY COURTS





GREENE COUNTY JUDICIAL CENTER