



Store in Fair Grove



Springfield Public Square



Springfield Skyline

GREENE COUNTY AMERICAN RESCUE PLAN ACT 2021 NEEDS ASSESSMENT

PRESENTED TO

Presiding Commissioner Bob Dixon

Commissioner Rusty MacLachlan

Commissioner John Russell



COUNTY OF

GREENE

PRESENTED BY

THE GREENE COUNTY ARPA TEAM

NOVEMBER, 2021

CONTENTS

<i><u>Executive Summary</u></i>	2
<i><u>Census Data</u></i>	4
<i><u>Greene County Community Survey</u></i>	9
<i><u>Forward SGF</u></i>	26
<i><u>City of Springfield Community Survey</u></i>	29
<i><u>Community's Diverse Young Professionals</u></i>	30
<i><u>Community Focus Report 2021</u></i>	31
<i><u>Springfield Inclusiveness Survey</u></i>	34
<i><u>Emergency Rental Assistance</u></i>	37
<i><u>Nonprofit Listening Sessions</u></i>	39
<i><u>Greene County Needs Assessment Equity Plan</u></i>	47
<i><u>Needs Assessment Summary & Recommendations</u></i>	49
<i><u>Appendix</u></i>	57
<i><u>Appendix A - Community Survey Written Responses</u></i>	57
<i><u>Appendix B - Greene County ARPA Letters of Interest</u></i>	88
<i><u>Appendix C - Community Survey</u></i>	91
<i><u>Appendix D - Nonprofit Listening Sessions Attendance Sheet</u></i>	92
<i><u>Bibliography</u></i>	94



Executive Summary



Greene County, Missouri is located in the beautiful Ozarks of Southwest Missouri. It is composed of a total area of 678 square miles with 2.6 square miles of that being water. Greene County has continued to grow in the last decade which is consistent with most of its history. The county comprises a variety of landscapes and geographical features. It is characterized by one large city, Springfield, which had a population of 169,176 in 2020. Smaller rapidly growing cities, several villages, farms, rural areas, and unincorporated areas characterize the remainder of the county.

On March 11, 2021, Congress passed the \$1.9 trillion American Rescue Plan Act (ARPA). ARPA is the third round of stimulus funding provided by the Federal Government to offset the economic and social impacts of the COVID-19 Pandemic. While the previous rounds, provided through the Coronavirus Aid, Relief, and Economic Security Act (CARES), focused on immediate economic relief, the ARPA focuses on long-term sustainable recovery with some immediate relief.

Executive Summary



Greene County is the direct recipient of \$56,928,520 through ARPA's State and Local Fiscal Recovery Fund. \$28,464,260 of Greene County's allocation arrived on May 19. The rest will arrive in 2022.

There are several distinctive features of the ARPA funding from the previous CARES grant. They include:

1. The legislation allows the county to utilize funds for revenue replacement.
2. Funding can be utilized for capital projects.
3. The legislation strongly suggests that grant recipients consider and incorporate equity focus in all funded projects to ensure underrepresented and underserved community pockets receive eligible funding.
4. The funding comes to Greene County in two separate allocations, one half at a time.
5. The county has until December 2024 to allocate or commit funding and an additional two years to spend the funds.

The Needs Assessment document is developed to provide a basis for priority funding categories for the Greene County Commission to consider. Of course, these decisions must be made within the guidelines of the 66 eligible categories that the US Treasury Department has provided.

In developing the Needs Assessment for the consideration of the Greene County Commission and administrators, the ARPA Team reviewed and utilized a number of different documents and sources to provide the most recent information on the impact of the COVID-19 Pandemic on Greene County and its residents.

Greene County Census Data



The majority of Greene County residents live inside Springfield city limits. The Queen City gained 9,678 new residents, or 6.1 percent more people, for a city population of 169,176.

The new statistics show that the county population increased by more than 23,700 people, with the net gain made up entirely by people of color. The white population was statistically flat, falling by a total of 122 people. The growth rate exceeds the Missouri State average. This positive growth rate indicates that Greene County is a desirable place to live, work, and grow.

As the community is now a county of essentially 300,000 plus people, the needs assessment portion of the American Rescue Plan Act (ARPA) becomes more important than ever as new growth presents new opportunities as well as new challenges. COVID-19 has required the county act prudently and decisively to insure that its citizenry were able to access needed public health and other essential services. In the midst of the COVID-19 pandemic, Greene County has responded first with the implementation of the CARES program and providing direct assistance to all facets of the community. The county distributed \$34.4 million in CARES funds to over 800 applicants in 2020. The County Commission has utilized all available resources to provide leadership and support through a challenging time.

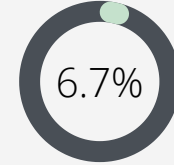
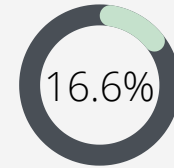
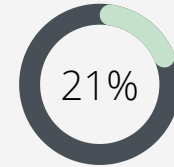
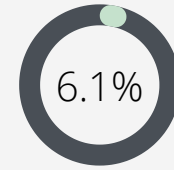
One of the interesting aspects of the new citizen growth in Greene County is that it has been almost exclusively by diverse individuals. One of the specific focus areas of the ARPA legislation is equity consideration. This will be reflected in the ARPA needs assessment. This is evidence that a variety of persons consider Greene County a desirable place to make a home.

"Holman, Gregory. "New Census Results Show Springfield and Southwest Missouri Becoming More Diverse." Leader. Springfield News-Leader, August 13, 2021. <https://www.news-leader.com/story/news/local/ozarks/2021/08/13/census-2020-results-data-shows-springfield-missouri-mo-population-becoming-more-diverse/8123251002/>.

Greene County Census Data

Greene County Population: 298,915 (8% increase since 2010, 275,174)

- City of Springfield Population: 169,176 (a 6.1% increase since 2010, 159,498)
- City of Republic Population: 18,750 (a 21% increase since 2010, 14,751)
- City of Willard Population: 6,344 (a 16.6% increase since 2010, 5,288)
- City of Battlefield Population: 5,990 (a 6.7% increase since 2010, 5,590)



The new census information reflects rapid growth in the smaller municipalities in particular and a healthy increase in the county population.

Greene County Racial Makeup

- White alone: 90.3% (91.2% in 2010)
- Black or African American alone: 3.5% (2.9% in 2010)
- Asian alone: 2.3% (1.6% in 2010)
- American Indian and Alaska Native alone: 0.8% (0.7% in 2010)
- Hispanic or Latino: 3.9% (3.0% in 2010)
- Two or More Races: 3.0%



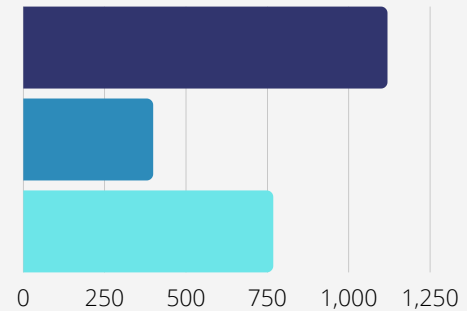
These statistics indicate exactly where the growth in diversity is occurring. It is interesting to note that racial and ethnic minorities all show an increase in population with the exception of American Indian and Alaskan Native which has been relatively flat. The county's white population has shown a decrease.

Greene County Census Data

Greene County Housing Statistics

Some of the more interesting aspects of the housing data include:

- Median monthly owner cost, with mortgage: \$1,118
- Median monthly owner cost, without mortgage: \$398
- Median gross rent: \$767
- Persons per household: 2.22
- Households with a broadband internet subscription: 76.5%

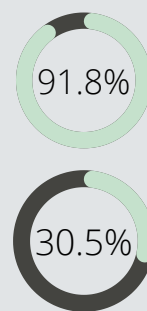


This information is very important as the pandemic has exacerbated housing costs which has a strong impact on housing affordability. Greene County has had a reputation for being a very affordable area. In 2021, the housing market had a very strong rise in demand and home appreciation. This has occurred after the Census information, but is reflected in the Community Survey.

Statistics from 2021 show that Springfield home values have increased by 14.8% in the last year and 52.5% over the last 5 years. Similarly, rent in Springfield has shown an increase of 15-30% year-over-year, depending on the source.

Greene County Education Statistics

- High School graduate or higher, persons age 25+: 91.8%
- Bachelor's degree or higher, persons age 25+: 30.5%



Greene County Economic Statistics

- Percent of population (16 years+), in Greene County, employed and working: 61.4%
- Percent of female population (16 years+), in Greene County, employed and working: 56.9%

Rohde, Jeff. "Springfield, Mo Real Estate Market: Stats & Trends for 2021." Learn Real Estate Investing. Roofstock Realty, Inc. [CA License #01995170], September 15, 2021. <https://learn.roofstock.com/blog/springfield-real-estate-market>.
Zumper. "Average Rent in Springfield, MO and Cost Information." Zumper, 2021. <https://www.zumper.com/rent-research/springfield-mo>.
"U.S. Census Bureau Quickfacts: Greene County, Missouri." United States Census Bureau. Accessed October 26, 2021. <https://www.census.gov/quickfacts/greencountymissouri>.
<http://censusviewer.com/county/MO/Greene>

Greene County Census Data

Income and Poverty Data

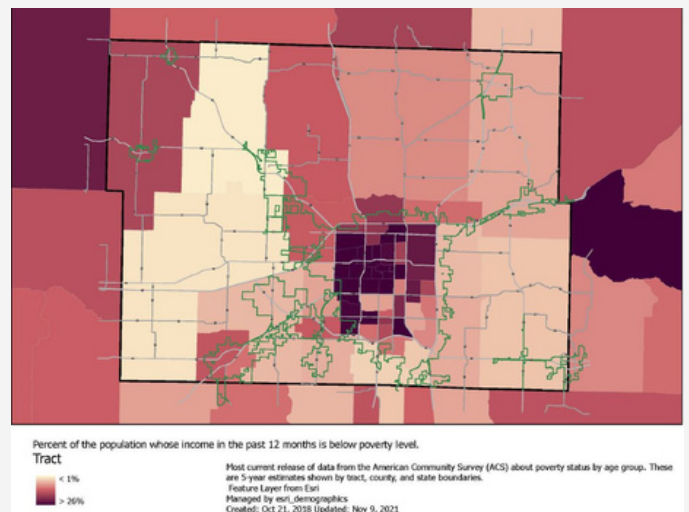
The median Greene County household income of \$46,086 compares to the city of Springfield (\$36,856) and the state of Missouri (\$55,461). Similarly, the county poverty population of 14.4% compares to a poverty population in the city of Springfield of 22.9%. These data points suggest some of the trend indicators and community demographic changes that show up in the 2020 census. The map to the right shows recent poverty data for Greene County. Most of Springfield seems to be significantly below the poverty level, with the exception of Southcentral and Southeast Springfield. Additionally, Ash Grove, Walnut Grove, and the areas surrounding show to be below the poverty level.

Poverty in Springfield by Race/Ethnicity:

	2012	2019
White	22.7%	21.8%
Black	45.8%	32.6%
Asian	28.6%	40.9%
Hispanic	42.8%	27.2%

Poverty in Springfield

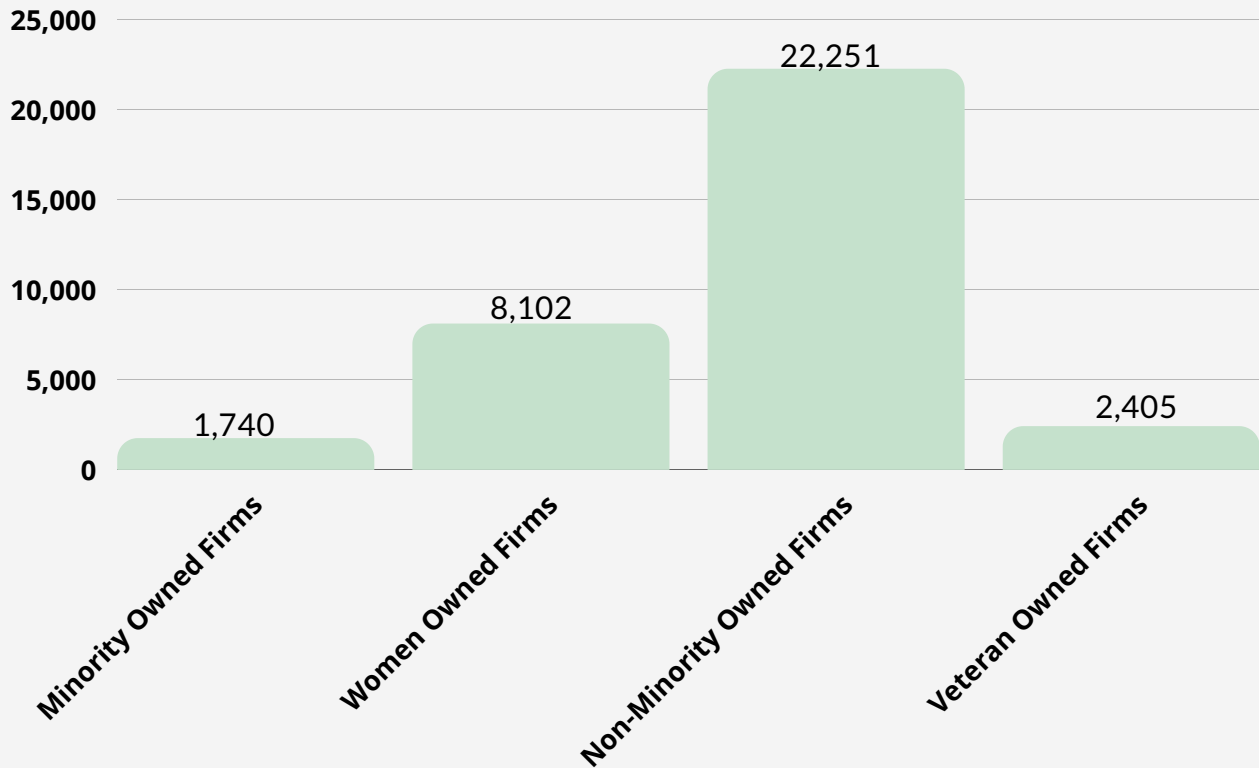
	2014	2019
Total Population	25.7%	22.9%



Poverty in Springfield has slowly trended down. There is a significant decrease in poverty amongst Blacks and Hispanics. One concern is the increase in poverty amongst Asians in Springfield. While poverty has decreased amongst White residents, it is less than a 1% decrease. These data points do suggest that poverty is a concern in our county. While there is a higher concentration in the City of Springfield, the poverty levels certainly indicate that households are facing economic challenges. The pandemic has placed additional pressures on those in poverty. Some of this was offset by federal stimulus payments and enhanced unemployment benefits. Those initiatives have ended and while other federal initiatives have begun, we are well aware of the impact of poverty and its effect on quality of life issues for the county's residents.

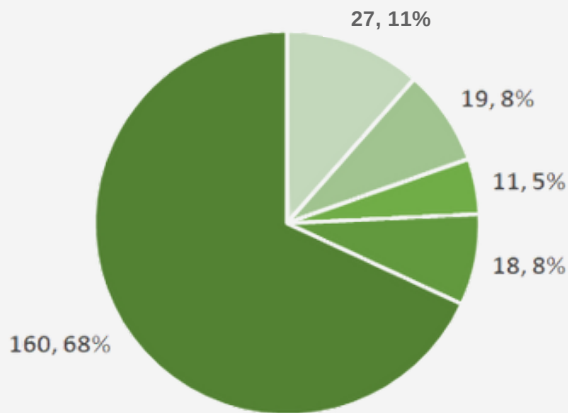
Greene County Census Data

Business Data

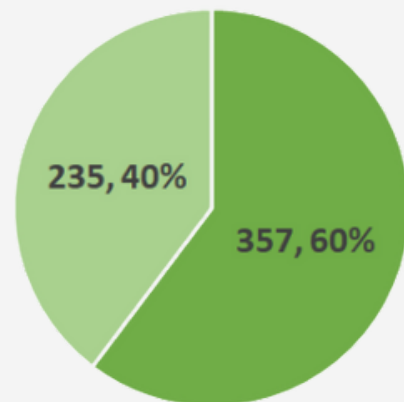


The recent CARES program administered by Greene County was another reflection of the increasing diversity, with the small business assistance program distributing funding in the following breakdowns.

Diverse Recipients



Total Business Grants



■ Asian
 ■ Black
 ■ Hispanic
 ■ Other
 ■ Women
 ■ Majority Owned
 ■ Minority Owned

Greene County Community Survey



City of Springfield
Woodruff Building

Greene County conducted a community survey for Greene County residents from September 10-23, 2021. The survey was available online and in print. Physical copies were distributed to non-profits and Greene County libraries. It was advertised through the media, social media, and the county website.

The purpose of the survey was to gauge what issues community members perceived as being high priority for the county to address using American Rescue Plan Act funding. The survey provided an opportunity for the county to capture a snapshot of important issues.

Respondents were asked to select up to 5 out of the 22 eligible ARPA funding categories listed. The 22 categories reference the 7 expenditure categories provided by the United States Department of the Treasury.

Respondents were also asked to indicate what part of Greene County they were from. Finally, respondents were given the opportunity to detail additional community needs in a free-response question.

Greene County Community Survey



At the time of the survey's conclusion, a total of 1,719 respondents across Greene County completed the survey. Of the 1,719 participants, 1,651 surveys were completed online and 68 were completed on a physical copy. The average response time for online surveys was 5 minutes and 26 seconds. The total number of participants exceeded Greene County's expectations and is very helpful to provide a more representative look at the needs and priorities of the entire county. The information provided by participants from all cities and municipalities in Greene County is incredibly important and will help inform the responses crafted by different localities. Of the total responses, 1,107 came from Springfield, compared to 375 of responses that came from municipalities and villages. Additionally, 237 individuals who do not live within the geographic

boundaries of a city selected "Unincorporated/Outside of City Limits." This distribution reflects varying populations around Greene County and indicates strong response rates from all areas. The distribution of responses from Greene County locations is consistent with population distribution. The 22 categories that participants could select as areas of high priority capture economic, educational, social, and health difficulties that were exacerbated as a result of COVID-19. The input received from survey participants will help direct where resources are allocated and ensure that solutions are crafted to alleviate immediate concerns and promote sustainable, long-term growth. The top 10 response categories are detailed below, followed by a description of their matching expenditure category provided by the US Treasury Department's Interim Final Rule.



Greene County Community Survey

Top 10 Community Survey Responses

- 1 Public Health, Mental Health Services - 834 Responses**
 - 1.10 Mental Health Services
 - Funding new or enhanced services that meet behavioral health needs exacerbated by the pandemic, as well as related public health needs, such as: mental health treatment, substance misuse treatment, hotlines and/or warmlines, crisis intervention services, overdose prevention, infectious disease prevention, behavioral/physical health primary care services.

- 2 Services to Disproportionately Impacted Communities, Housing Support: Affordable Housing - 531 Responses**
 - 3.10 Housing Support: Affordable Housing
 - Services to address affordable housing development, housing vouchers, and residential counseling and housing navigation assistance.

- 3 Services to Disproportionately Impacted Communities, Housing Support: Services for Unhoused Persons - 528 Responses**
 - 3.11 Housing Support: Services for Unhoused Persons
 - Services to address homelessness such as supportive housing, and to improve access to stable, affordable housing among unhoused individuals.

- 4 Public Health, Vaccination - 526 Responses**
 - 1.1 COVID-19 Vaccination
 - Vaccination programs including staffing, equipment, supplies, facilities and administrative expenses.



Greene County Community Survey

Top 10 Community Survey Responses

5 Negative Economic Impacts, Small Business Economic Assistance - 485 Responses

- 2.9 Small Business Economic Assistance (General)
- State, local, and Tribal governments may provide assistance to small businesses to adopt safer operating procedures, whether periods of closure, or mitigate financial hardship resulting from the COVID-19 public health emergency, including: loans, grants, and technical assistance.

6 Negative Economic Impacts, Assistance to Non-profit Organizations - 418 Responses

- 2.10 Aid to Non-profit Organizations
- State, local and Tribal governments may provide assistance to non-profit organizations to adopt safer operating procedures, weather periods of closure or mitigate financial hardship resulting from the COVID-19 public health emergency, including: loans, grants, and technical assistance.

7 Negative Economic Impacts, Household Food Programs - 390 Responses

- 2.1 Household Assistance: Food Programs
- Funds may be used to assist households, preferably those most disproportionately impacted, by the negative economic impacts of the COVID-19 public health emergency.

8 Infrastructure, Broadband - 370 Responses

- 5.16 Broadband: “Last Mile” Projects
- Investments in areas that are currently unserved or underserved (i.e., lacking a wireline connection that reliably delivers minimum speeds of 25 Mbps download and 3 Mbps upload). Prioritize projects that achieve last-mile connections to households and businesses.



Greene County Community Survey

Top 10 Community Survey Responses

9 Services to Disproportionately Impacted Communities, Healthy Childhood Environments: Childcare - 364 Responses

- 3.6 Healthy Childhood Environments: Childcare
- New or expanded high quality child care, home visiting programs for families with young children, and enhanced services for child welfare-involved families and foster youth.

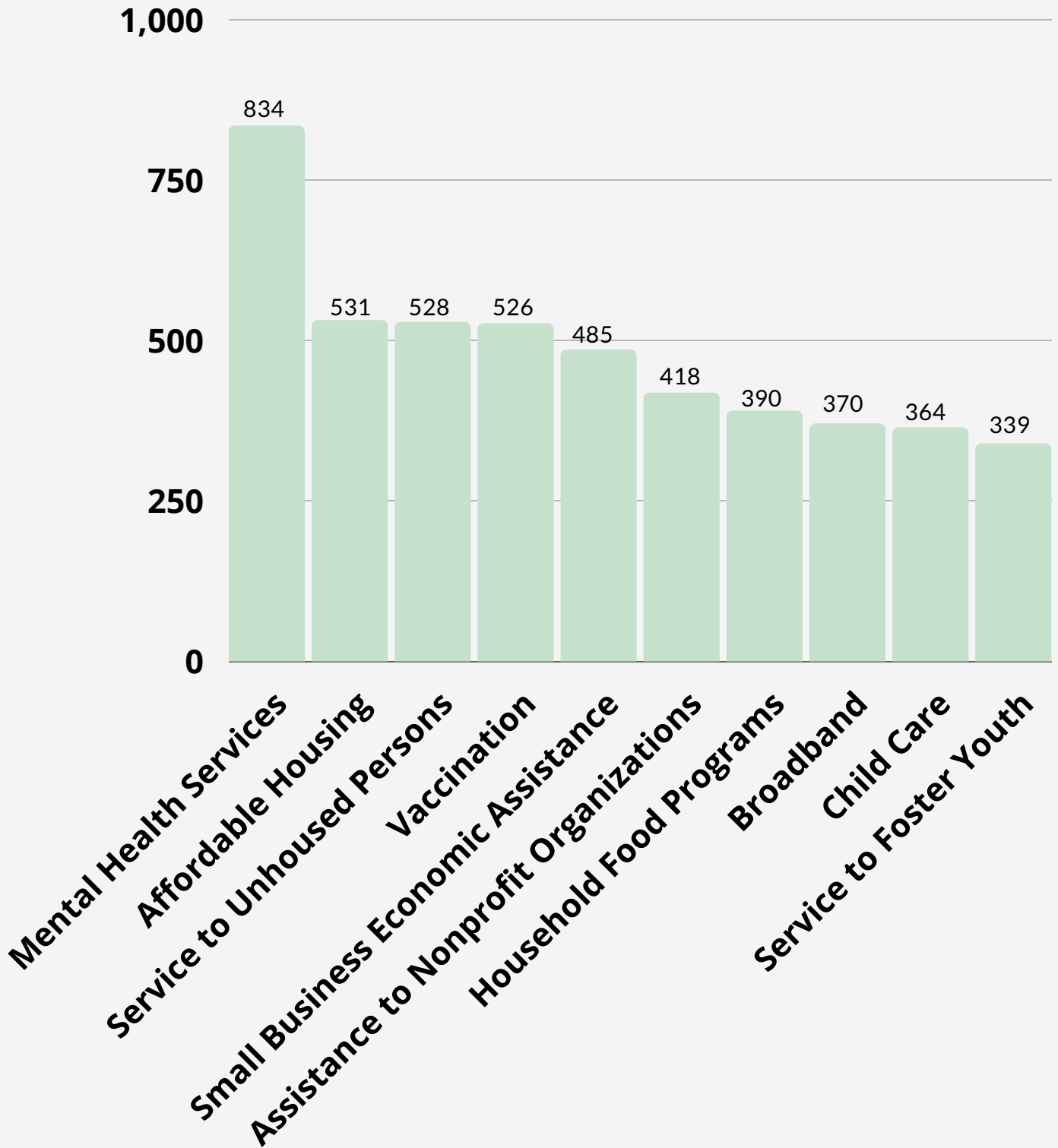
10 Services to Disproportionately Impacted Communities, Health Childhood Environments: Services to Foster Youth - 339 Responses

- 3.8 Healthy Childhood Environments: Services to Foster Youth or Families Involved in Child Welfare System
- Enhanced services for child welfare-involved families and foster youth to provide support and training on child development, positive parenting, coping skills or recovery for mental health and substance use challenges.

In addition to the breakdown of all survey responses, totals for the different villages of Greene County are tabulated and reported on the following page. The top five expenditure categories are listed in order of total responses. In the case of a tie that would push the number of listed categories beyond five, additional categories will be listed to avoid subjectivity and personal discretion. The categories that received an equal amount of votes are listed in order of their appearance on the Needs Assessment survey.

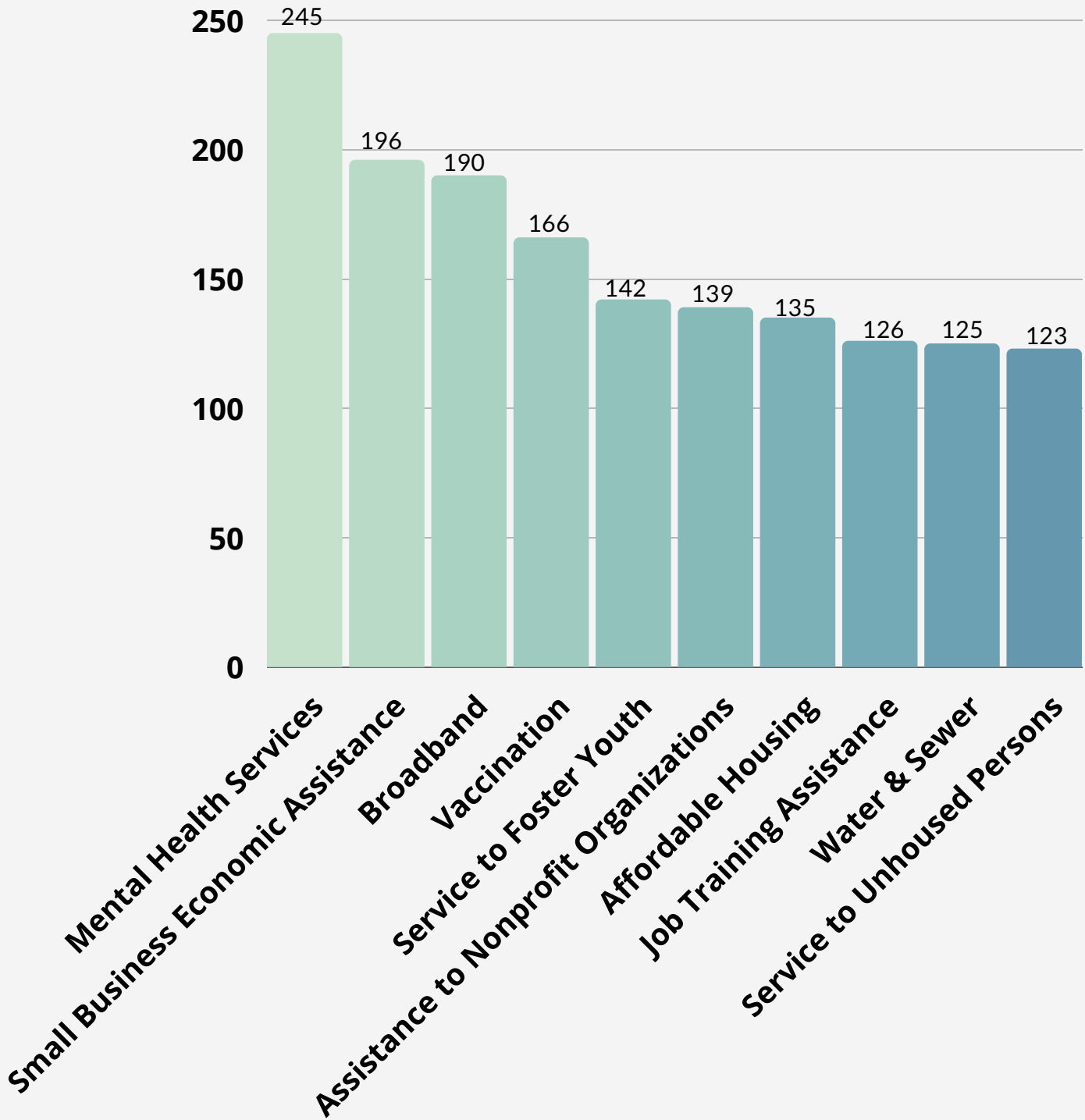
Greene County Community Survey

Top 10 Community Survey Responses



Greene County Community Survey

Top 10 Responses Outside of Springfield





Greene County Community Survey

Top Responses From Greene County Municipalities

Ash Grove - 19 Total Responses

1. Broadband - 7 responses, 37%
2. Vaccination - 6 responses, 32%
3. Mental Health Services - 6 responses, 32%
4. Household Food Programs - 4, 21%
5. Housing Support: Affordable Housing Programs - 4, 21%
6. Housing Support: Service to Unhoused Persons, 4, 21%

Battlefield - 44 Total Responses

1. Mental Health Services - 21 responses, 48%
2. Water and Sewer - 14 responses, 32%
3. Vaccination - 13 responses, 30%
4. Small Business Economic Assistance - 13 responses, 30%
5. Healthy Childhood Environments: Child Care - 11 responses, 25%
6. Healthy Childhood Environments: Services to Foster Youth - 11 responses, 25%

Brookline - 14 Total Responses

1. Mental Health Services - 8 responses, 57%
2. Job Training Assistance - 6 responses, 43%
3. Assistance to Nonprofit Organizations - 5 responses, 36%
4. Small Business Economic Assistance - 5 responses, 36%
5. Housing Support: Service to Unhoused Persons - 4 responses, 29%
6. Broadband - 4 responses, 29%

Fair Grove - 24 Total Responses

1. Assistance to Nonprofit Organizations - 10 responses, 42%
2. Mental Health Services - 9 responses, 38%
3. Vaccination - 8 responses, 33%
4. Household Food Programs - 8 responses, 33%
5. Housing Support: Affordable Housing - 7 responses, 29%



Greene County Community Survey

Top Responses From Greene County Municipalities

Republic - 114 Total Responses

1. Small Business Economic Assistance - 45 responses, 39%
2. Mental Health Services - 44 responses, 39%
3. Broadband - 44 responses, 39%
4. Assistance to Nonprofit Organizations - 39 responses, 34%
5. Housing Support: Affordable Housing - 37 responses, 32%

Rogersville - 51 Total Responses

1. Mental Health Services - 17 responses, 33%
2. Small Business Economic Assistance - 17 responses, 33%
3. Healthy Childhood Environments: Services to Foster Youth - 17 responses, 33%
4. Broadband - 15 responses, 29%
5. Job Training Assistance - 11 responses, 22%
6. Housing Support: Service to Unhoused Persons - 11 responses, 22%

Strafford - 32 Total Responses

1. Small Business Economic Assistance - 14 responses, 44%
2. Broadband - 13 responses, 41%
3. Mental Health Services - 12 responses, 38%
4. Household Food Programs - 9 responses, 28%
5. Job Training Assistance - 8 responses, 25%
6. Housing Support: Affordable Housing - 8 responses, 25%

Walnut Grove - 4 Total Responses

1. Healthy Childhood Environments: Services to Foster Youth - 3 responses, 75%
- *Nine different categories tied for second place, each receiving 1 vote. The nine categories are as follows: Vaccination, Testing and Contact Tracing, Mental Health Services, Personal Protective Equipment, Job Training Assistance, Small Business Economic Assistance, Education Assistance: Early Learning, Housing Support: Service to Unhoused Persons, and Health Social Factors: Community Violence Intervention.*

Greene County Community Survey

Top Responses From Greene County Municipalities

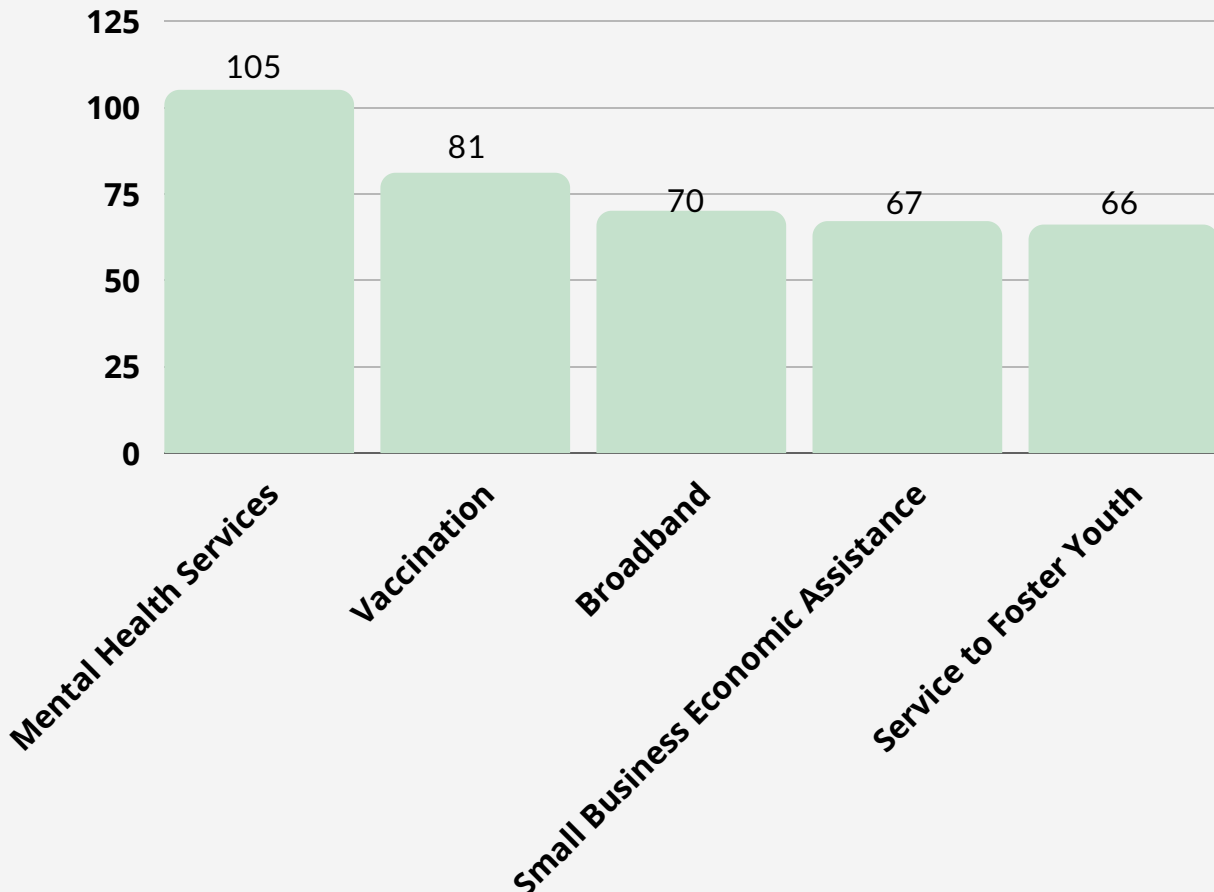
Willard - 59 Total Responses

- 1.Small Business Economic Assistance - 23 responses, 39%
- 2.Mental Health Services - 18 responses, 31%
- 3.Broadband - 16 responses, 27%
- 4.Job Training Assistance - 15 responses, 25%
- 5.Water and Sewer - 15 responses, 25%

No Location Provided - 14 Total Responses

- 1.Vaccination - 6 responses, 43%
- 2.Aid to Tourism, Travel, Hospitality Industry - 5 responses, 36%
- 3.Mental Health Services - 4 responses, 29%
- 4.Small Business Economic Assistance - 4 responses, 29%
- 5.Broadband - 4 responses, 29%
- 6.Water and Sewer - 4 responses, 29%

Top Responses - Unincorporated/Outside City Limits



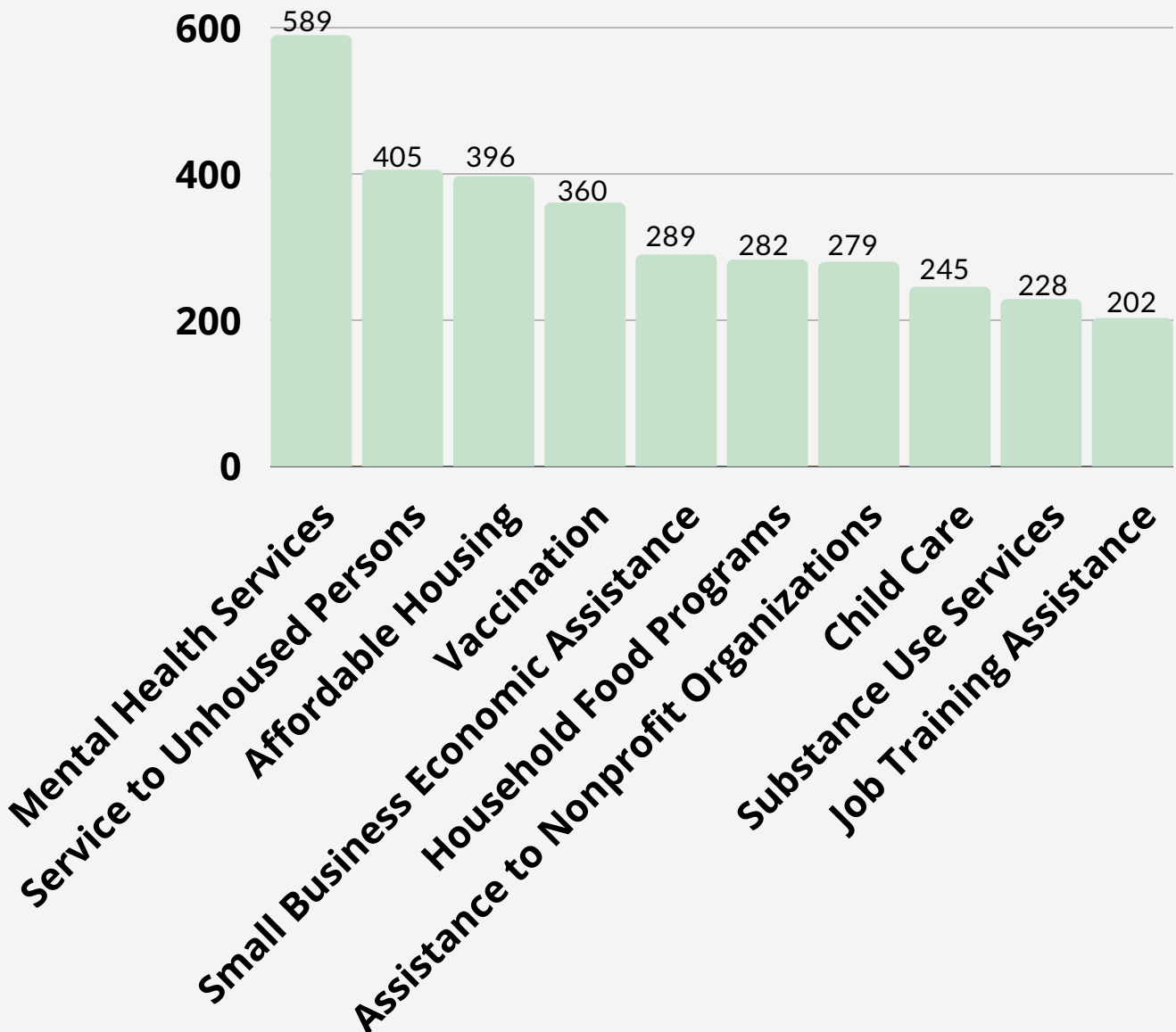
Greene County Community Survey

Top Responses - Unincorporated/Outside City Limits

Unincorporated / Outside of City Limits - 237 Total Responses

1. Mental Health Services - 105 responses, 44%
2. Vaccination - 81 responses, 34%
3. Broadband - 70 responses, 30%
4. Small Business Economic Assistance - 67 responses, 28%
5. Healthy Childhood Environments: Services to Foster Youth - 66 responses, 28%

Top 10 Responses in Springfield



Greene County Community Survey

Top Responses in Springfield

Springfield - 1,107 Total Responses

1. Mental Health Services - 589 responses, 53%
2. Housing Support: Service to Unhoused Persons - 405 responses, 37%
3. Housing Support: Affordable Housing - 396 responses, 36%
4. Vaccination - 360 responses, 33%
5. Small Business Economic Assistance - 289 responses, 26%

Participants in the Community Survey were given the opportunity to detail any additional comments, concerns, or areas of interest that respondents deemed to be important issues. 645 total comments were received. Top comments that correspond to priorities listed in the Community Survey include additional investments in nonprofits, extended broadband to underserved areas, improved education retention programs, better eviction protection laws, increased low-barrier and affordable housing, more robust mental and physical health systems, and infrastructure renovations for drinking water, clean water, and storm water. Additionally, participants indicated areas of interest that were not included in the survey's enumerated

options including more COVID-19 information resources, crime prevention and treatment training for law enforcement officers, development of additional green spaces and eco-friendly infrastructure, and investments in public transit and transportation infrastructure. A complete copy of participants' comments is listed in the appendix. The comments are listed in order of when they were submitted. Greene County citizens detailed a wide range of issues that will help inform the direction of ARPA funding and allow county officials and local leaders to better attend to the needs of their constituents.

Greene County Community Survey

The comments from the public provide some rich anecdotal data to the perception of need from residents in the community. We have added several examples to the needs assessment document to provide context.

“

Growth and development in northwestern Greene County. Lack of ready access to variety of services and retail creates hardship for residents of this area of the country. Growth is focused on southern Greene County where many opportunities are already readily available.

- Resident, Ash Grove

”

“

Rental assistance, utilities assistance, improve public transportation/busses so individuals can reach jobs that would be otherwise unavailable due to having no vehicle.

- Resident, Springfield

”

“

We were essential workers during the first part of covid, independent contractors (spark, instacart, doordash, uber, etc.) who delivered groceries and food to households and did not shelter at home to keep people safe.

- Resident, Springfield

Greene County Community Survey

“

For my 5th option of how to spend the funds I would like to see the Springfield Greene County Parks upgraded. The restrooms at all facilities need improvements.

Our Greenway trails need mile markers replaced and sections of the trails resurfaced. Our soccer fields also need some major upgrading. Many families travel miles to play soccer and if our fields were improved we could bring those tourism dollars to Springfield/Greene County.

- Resident, Springfield

”

“

Providing kits for individuals/families when they test positive. The kits could include: oxygen pulse meter, soap, disinfecting products, thermometer, vitamins, Tylenol, Advil, instructions from local health departments, symptom checklist to watch for, medication options, etc. (This is just a few I thought of right off the top of my head) All we hear on the news is to get tested and about those in the hospital. Surely, 18 months into this we can do better than just wait until someone needs hospitalization.

- Resident, Unincorporated

”

“

I live within a quarter of a mile of dsl broadband, but have absolutely no options. Broadband is all around me, but our small areas has none. Years ago Mediacom quoted our street \$18,000 to provide us with broadband. Literally running the lines a quarter of a mile. This would be from Farm Roads 219 and 156 to 227 and 156. Help! In addition, more funding for the police and sheriff departments. We need more patrols for crime prevention, especially around MSU and unincorporated Greene County.

- Resident, Unincorporated

”



Greene County Community Survey



I would like to see help with helping people like me that make just a little over the income level where you request for help. For example I don't qualify for help with my house payment or food services because I make a couple thousand dollars over what the limit of income is to qualify for these services. I need help just like these people that make a little less than me. I feel like I get penalized for having an education. I can't go to the food pantry or even have help paying my utility bill. I'm also disabled and can't even get help with transportation to and from my Dr. appointments and physical therapy because I make too much AND I'm NOT 60 to be able to ride the oas bus. Taxi cabs are unreliable and Uber costs too much; I can't afford that. These services need to be expanded for us that still can't make ends meet. Also, These services should be available to all regardless of income. Another thing that bothers me is these people that make less than me that get the help have cable, (I can't afford it), Newer smartphones and drive newer vehicles than I do, etc. Thank you.

- Resident, Springfield



I've noticed a substantial amount of this funding has been going towards parks/trails and repaving Springfield streets. These things should be in the counties annual budget, not the American Rescue act. The reasoning is to provide jobs for our area. These "jobs" you are currently proving has been for the city workers that were continuously employed throughout the pandemic. The American Rescue Act is for providing assistance to those who have struggled throughout the pandemic, lost their homes, and struggling to feed their families. And those who were considered "essential workers" are burnt out and has felt extremely unappreciated during this tragic period in all our lives. Trails and parks are not creating jobs nor is it providing the help that our community requires to feed, cloth and shelter themselves. Housing and rental cost are out of control! And the ones that even lower middle class can afford are borderline dilapidated and should be condemned. As a single mom that makes less than \$40k a year, a 3 bedroom home is unattainable in Springfield these days. It's price gouging. Focus on the recovery, make our city safer and help get the cost of living back to a realistic standard.

- Resident, Springfield





Greene County Community Survey

Community Survey Priority Ranking

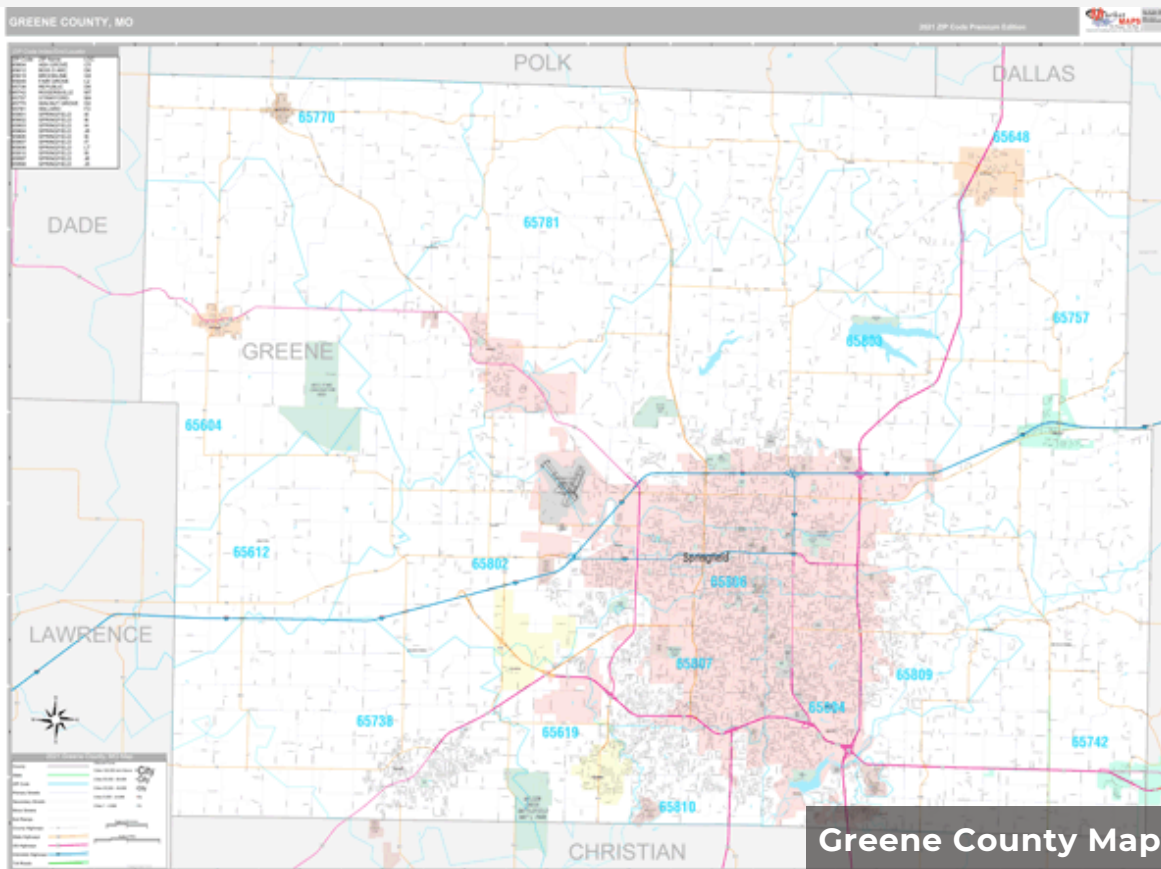
This is the complete breakdown of all the responses received.

1. Mental Health Services - 834
2. Housing Support: Affordable Housing - 531
3. Housing Support: Service to Unhoused Persons - 528
4. Vaccination - 526
5. Small Business Economic Assistance - 485
6. Assistance to Nonprofit Organizations - 418
7. Household Food Programs - 390
8. Broadband - 370
9. Healthy Childhood Environments: Child Care - 364
10. Healthy Childhood Environments: Services to Foster Youth - 339
11. Job Training Assistance - 328
12. Substance Use Services - 309
13. Water and Sewer - 294
14. Aid to Tourism, Travel, Hospitality Industry - 252
15. Testing and Contact Tracing - 237
16. Education Assistance: Early Learning - 237
17. Premium Pay for Public Sector Employees - 228
18. Health Social Factors: Community Violence Interventions - 210
19. Mortgage Assistance - 197
20. Personal Protective Equipment - 135
21. Grants for Other Employees - 101
22. Revenue Replacement: Provision of Government Services - 85

Greene County Community Survey

Community Survey Location Ranking

- 1.Springfield - 1,107
- 2.Unincorporated/Outside of City Limits - 237
- 3.Republic - 114
- 4.Willardard - 59
- 5.Rogersville - 51
- 6.Battlefield - 44
- 7.Strafford - 32
- 8.Fair Grove - 24
- 9.Ash Grove - 19
- 10.Brookline - 14
- 11.Walnut Grove - 4



Forward SGF



Springfield's Housing and Urban Development Planning staff implemented a citizens outreach effort from 2018 to 2019, which included a Community Development Needs Survey for Springfield residents, neighborhood groups, businesses, developers, and both public and private sector service providers. In total, the survey received 800 responses.

The needs assessment focused on the city's categories of Community Development Block Grant (CDBG) spending, which includes affordable housing, economic development, public services, public facilities, and public/private improvements and infrastructure. Respondents were asked to rate, on a 1-5 scale, the city's CDBG spending categories. All 5 CDBG funding categories received an average rating indicating a need level between a moderate need and high need.

Survey questions were broken up into 8 parts:

- General Statistics
- Barriers to Fair Housing Choice
- Program Categories
- Affordable Housing
- Economic Development
- Public Services
- Public/Private Improvements & Infrastructure
- Public Facilities

Forward SGF



Top Forward SGF Survey Results:

- Public & Private Improvements & Infrastructure” was considered the most needed program category by respondents.
- “Rehabilitation of rental residences” was considered the most needed of programs that “ensure the availability of housing with costs, including utilities, that are no more than 30% of an individual’s income.”
- “Vocational Training” was considered by respondents to be the most needed program to “create employment opportunities for low to moderate income individuals.”
- “Traditional housing for homeless youth” was considered the most needed out of programs “provided by non-profits.”
- “Destruction of Dilapidated Buildings” was considered the most needed of projects that “improve accessibility, safety, security, and livability of low- and moderate-income neighborhoods.”
- “Homeless shelters” were considered the most needed project of those that “involve the acquisition, construction, reconstruction, rehabilitation, and installation of public facilities.”

Forward SGF

©2012 Carolyn Jacobs
facebook.com/CAnniesPhotos



Comments left by respondents in the Community Development Needs Survey identified street & sidewalk improvements and building demolition as high priority.

The results of the Forward SGF and Greene County Community Surveys identified several areas in which similar priority areas were highly ranked. A focal point of both results was aid to unhoused persons. “Service to unhoused persons” and “affordable housing” both ranked in the top 5 of the Community Survey’s Springfield results. Likewise, the Forward SGF survey saw “traditional housing for homeless youth” and “homeless shelters” selected as important needs.

However, because the Forward SGF survey was conducted before the COVID-19 Pandemic, it did not account for vaccinations and mental health services being as high a priority. This is why vaccinations and mental health services are a concern in the Community Survey instead. Additionally, the Forward SGF survey had vocational training and infrastructure needs ranked higher than the Community Survey. This is likely because the Community Survey refers to water and broadband infrastructure only.

City of Springfield Community Survey



The City of Springfield and its American Rescue Plan Act Committee conducted a community survey during the fall of 2021. The survey was intended to determine funding priorities for ARPA funds. A questionnaire was mailed to 5,000 randomly selected households within the city limit of Springfield. Respondents used a 5 point scale to determine the level of importance of 8 funding categories. A total of 1,438 questionnaires were completed.

Ranked by level of importance by respondents, the categories fall in this order:

1. Public safety and crime prevention (55%)
2. Homeless and housing services (40%)
3. Community health and wellness (37%)
4. Premium pay for essential workers (36%)
5. Stabilizing and revitalizing neighborhoods (29%)
6. Quality of Life (29%)
7. Economic recovery and growth (24%)
8. Public facility preservation and enhancement (22%)

After a review of the results, the committee voted to recommend the use of funds for retention pay for all full-time Fire, Police, and Health Department staff. This recommendation will be evaluated by the full City Council.

The Greene County and City of Springfield Community Survey results differ in several ways. The city survey results have crime and safety as the number one concern, while the county results reflect less concern. Likewise, the city results reflect more concern for essential worker pay. That being said, both survey results express the need to improve community health, mental health, affordable housing, and service to the unhoused. However, the funding categories offered in each survey may skew the results. For example, the city survey presents 8 broad funding categories to choose from, while the county offered 22 based on the 66 categories provided by the Treasury.

Community's Diverse Young Professionals

2020 Survey Report

Dr. Lyle Foster, Dr. Ximena Uribe-Zarain, and the Lenica Consulting Group developed a Community Research Report in 2020. The report included a survey which was aimed at capturing the climate of inclusion in Springfield by gathering input from diverse young professionals. The study hoped to aid community initiatives that confront barriers to inclusion and improve the climate of inclusion. The project was funded by the Community Foundation of the Ozarks and supported by Missouri State University.

103 respondents completed the survey. Of these, the large majority were in the target age of 21-40 years old and worked/studied/lived in Springfield. Because of the COVID-19 pandemic, the study was limited to online data collection. The main section of the survey consisted of 22 multiple-choice questions and 8 open-ended questions.

Respondents were asked to provide some recommendations to aid in the pursuit of inclusion. Recommendations to make Springfield more attractive to diverse professionals:

- Make the city and workplaces more diverse and inclusive. Not only on paper, but by being proactive and taking action.
- Increase diverse representation in leadership roles at the city level, universities, businesses, boards, and committees.
- Create and improve job opportunities, including better wages, progression for new-majority employees, and promotion.
- Promote and incentivize events and amenities geared towards locally underrepresented groups, e.g. drag show, hip hop music, graffiti art, salsa dancing, African hair braiding, lunar new year, etc.
- Provide more fair and equitable access to housing, jobs, and financial resources for minorities

A major component of the ARPA legislation is equitable recovery. Minority groups were disproportionately affected by the impacts of the pandemic. It is vital that the county invests time and effort finding ways to assist the most underserved communities. Considering the recommendations made by diverse professionals from Springfield is a good and necessary beginning.

Community Focus Report 2021



Biennially, a Community Focus Report card is conducted and compiled by individuals and subcommittees of nonprofits and local governments in the Springfield/Greene County area. Each committee or individual with expertise shares insight into the area they work. Each report has a set of community committees which identify blue ribbons and red flags to highlight areas of conversation in every targeted area. Blue ribbons represent positive aspects of targeted areas while red flags represent issues within the community. Because of the COVID-19 Pandemic, the targeted areas of the 2021 report are different from those in previous Community Focus Reports. The 2021 targeted areas and their relevant red flags are provided below.

- **Health Care Access & Quality Red Flags**

- Mental Health and Substance Abuse
- Child Abuse and Neglect
- Lack of Support for Mitigating Children’s Mental Health Issues
- Opioid Proliferation

The results of the Community Survey share commonalities with the red flags addressed under this theme. Mental Health Services were the number 1 need identified by Greene County residents. Similarly, the need for Healthy Childhood Environments were represented in the top 10 in the survey.

Community Focus Report 2021

The need for affordable housing is represented in the Community Focus Report and in the Community Survey. The need for Affordable Housing was ranked at number 2 in the survey results. Additionally, Job Training Assistance and Water Infrastructure are important Expenditure Categories authorized by ARPA.



- **Economic Stability Red Flags**

- Skilled Worker Shortages
- Continued Need to Address Wages
- Lack of Safe Affordable Housing
- Aging Housing Stock
- Housing Instability for Lower-Income Residents
- Concerns about Water Sources

Pandemic-Related Learning Challenges and Teacher Shortage / Recruitment Challenges are serious issues in our community. These issues were represented in the Community Survey under Education Assistance / Early Learning, Premium Pay for Public Sector Employees, and Job Training Assistance. None of these were identified as top 10 Green County priorities based on the survey responses.

- **Education Access & Quality Red Flags**

- Pandemic-Related Learning Challenges
- Teacher Shortage and Recruitment Challenges

The red flags raised under Neighborhood & Built Environment were somewhat represented in the Community Survey by Assistance to Nonprofit Organizations, Mental Health Services, Aid to Tourism Industry, and Premium Pay for Public Sector Employees. Some of these needs were ranked high in the Community Survey responses, however they do not exactly mirror the red flags.

- **Neighborhood & Built Environment Red Flags**

- Parks, Trails and Infrastructure Funding
- Greene Space Preservation
- Public Safety Staffing Shortages
- Rising Crime

Community Focus Report 2021

The red flags raised under Social & Community Context were highlighted in the Community Survey by Aid to Tourism and Assistance to Nonprofit Organizations. Assistance to Nonprofit Organizations was identified as a top need by respondents in the Community Survey.



- **Social & Community Context Red Flags**
 - Prolonged Shutdown Affecting Arts Engagement/ Participation
 - Chronic Funding Challenges for Arts

The Community Focus Report is valued and respected by community leadership in Greene County and the Ozarks. The biennial release is always highly anticipated and relied on to help assess the community's assets and challenges. It is a good sign that Green County's Community Survey identifies similar challenges to the Community Focus Report's red flags.

The Needs Assessment recognizes the significance of the arts in our community, not only as an enjoyable and cultural experience but also as an economic engine for our city and county. A study that was conducted by the arts council noted the economic impact in 2017 as \$26.9 million and the equivalent of 1,065 full-time jobs. Largely due to many of the devastating aspects of the COVID-19 Pandemic and venues being closed for significant periods of time, the arts did not always emerge as a top identified need in our county. This is part of the rationale of looking at a number of sources of information to garner a more complete picture. Support to nonprofits and aid to tourism are certainly categories that can be utilized for arts organization support.

Springfield Regional Arts Council. "Springfield Now Has Hard Data to Describe the Local Arts Economy" by Gregory Holman, Springfield News-Leader (July 13, 2017)." Springfield Regional Arts Council. Accessed November 10, 2021.
<https://www.springfieldarts.org/springfield-arts-mean-business>.

Springfield Inclusiveness Survey



From January to March in 2020, 2,276 Greene County citizens completed a survey created by the Mayor's Commission on Human Rights and the City of Springfield to measure views on inclusiveness in the area. Participants answered several questions that captured attitudes towards race and inclusion, witnessed or experienced discrimination, tolerance and hostility, and potential areas for improvement. The final summation of the results was completed by Dr. Gloria J. Galanes, Professor Emerita at Missouri State University.

Responses analyzed in the report reflected the wide variety of respondents and the rich detail offered in their answers. In one question, citizens detailed ways that Springfield could become a stronger, more inclusive community.

Top responses include:

- "More diverse community and greater visibility in community leadership"
- "Opportunities for diverse citizens to interact: Providing education, hosting more community events, providing opportunities for personal interaction"
- "Adding legal protections for LGBTQ and other underrepresented groups individuals"
- "Accessibility and transportation issues, particularly for the disabled"

Springfield Inclusiveness Survey

Additionally, respondents listed existing barriers that prevented them from participating completely in the community. “Nearly one-third, or 30.52%,” said they had experienced a barrier as a result of their race, gender, age, religion, sexual identity, or disability. Frequently cited barriers include:

- “Barriers relating to disability accommodations and transportation,” including limited access to services and reduced travel as a result of limited mobility and few alternative transit methods
- “Discrimination based on LGBTQ+ status,” including legal discrimination and hostile treatment
- “Barriers of race and ethnicity,” including the manifestation of covert or overt discrimination
- “Barriers due to social and economic factors,” including limited financial flexibility, negative wealth gap, and classism
- “Barriers for non-Christians,” including neglect, exclusion, or outright hostility
- “Barriers related to generalized fear of crime, drugs, potential harassment,” including safety, general harassment, and criminal activity



In the conclusion of the Springfield Inclusiveness Report, Dr. Galanes summarizes next steps Greene County and the City of Springfield should consider as they look to implement new policies or improve existing systems to increase safety, security, and inclusion. Dr. Galanes notes that these next steps attempt to capture the wide range of comments from all demographics, however, the breadth and diversity of experiences makes generalization difficult.

Springfield Inclusiveness Survey

Major next steps are described below:

- “Describing why diversity and inclusion are important”
- “A multi-pronged approach” that effectively utilizes city leadership, media outlets, and citizen services
- “All the key players in the city and area must be on board,” meaning that city, county, and community leaders and officials must all issue statements of support, use “inclusive language,” diversify leadership, and ensure accountability
- “Springfield must attend to economic issues that affect acceptance for diversity”
- “Springfield should hold facilitated dialogues where people can discuss issues of diversity, particularly race and LGBTQ+ status, and get to know one another as individuals rather than representatives of a category”

The findings of this report differ from Greene County’s Community Survey in that it focused primarily on outcomes of inclusion with an emphasis on solutions that decrease levels of discrimination and harassment. ARPA funding, however, strongly encourages local governments to consider how funding can improve the lives of all constituents, meaning that the array of experiences that Springfield citizens reported is incredibly useful to inform county officials on how to best allocate funding to maximize benefits to all groups and decrease inequities across the county. For example, barriers to affordable housing or cost-friendly utilities could receive funding that would both aid in economic recovery and target a source of inequality and discrimination for historically underserved groups. Attending to the needs of all constituents will continue to be a paramount priority for the county.

Emergency Rental Assistance

Greene County is the recipient of \$8,765,982.70 as part of the U.S. Treasury Department's Emergency Rental Assistance Program (ERA). These funds are part of the second federal \$900 billion COVID-19 relief package that was approved by Congress in December of last year. A key provision of that package is the Rental Assistance Program that set aside \$25 billion to help families and individuals nationwide whose ability to pay rent and utilities has been impacted by COVID-19. Additionally, Greene County received \$2,774,444.76 through the ERA via ARPA. ERA funds are a very valuable component of ARPA relief. Many residents are behind on their rent due to the economic consequences of the pandemic. Jeff Scott, the Greene County Budget Officer, has done an outstanding job in administering the rental assistance program with the help of 6 nonprofit organizations by offering applications for rental assistance to residents of Greene County. On September 2, 2021, The Washington Post highlighted the successful efforts of the county's ERA program in reaching individuals in both urban and rural areas of the county with varying levels of access to internet service.



This article used information from August 31, 2021 ERA Status Update that reported 71% of the program's initial funding has been awarded to partnering organizations. In the most recent Status Update from Greene County on November 8, 2021, the awarded percentage has increased to 81%, a ten-point jump. Additionally, 71.52% of the awarded funding has been used by organizations to service individuals in need of rental assistance. Greene County officials continue to provide regular status updates that show positive trends in awarded and used funds. For additional information, please refer to Greene County's ERA website or contact area organizations and community partners that have experience with utility and housing assistance programs.

Emergency Rental Assistance

Greene County is supportive of ERA funding and its assistance in addressing affordable housing. With federal rental assistance, many citizens within the county have been able to move forward after falling behind on rent. However, the county recognizes the complexity of addressing affordable housing. While many Greene County residents have been able to catch up on rent, ERA does not address the fact that housing payments are still not affordable to many. The Greene County Community Survey and Nonprofit Listening Sessions both identify affordable housing as being a significant issue. Considering the recent increase in housing costs in the Greene County housing sector, this continues to be a need that has major impacts.



Nonprofit Listening Sessions



From September 30 to November 3, Greene County hosted nonprofit listening sessions to create a better understanding of community needs before making any decisions regarding American Rescue Plan Act funding. This was also in acknowledgement of the crucial role nonprofits play in addressing the multiplicity of needs experienced by county residents. Representatives from nonprofit organizations were invited to attend one of four in-person meetings and a virtual meeting, if they preferred. In-person meetings were held on September 30, October 8, October 15, and October 18 at the Greene County Election Center Training Room. The online meeting was held on November 3. The nonprofit representatives were given the chance to share what they believed to be the most pressing issues in the community and in their line of work. Specifically, the county wanted an idea where issues stand since the passing and allocation of Coronavirus Aid, Relief, and Economic Security Act funds.

Nonprofit representatives were encouraged by Greene County representatives to keep sustainability and equity in mind when developing project proposals for ARPA funding. Common issues reported by representatives are collected and described below. The full list of attendees and the organizations they represent is located in the appendix. In addition, some representatives from Greene County nonprofits were unable to attend the listening sessions. They sent their comments and concerns to the ARPA team which have been considered and incorporated in the final assessment.

A total of 56 nonprofit representatives attended the sessions from 44 organizations. The input from these staff and volunteer members is very important in helping to ascertain new community priorities. Common areas of need are captured below, followed by a description of community members who highlighted specific problems in those areas, as well as means in which ARPA funding could be used.

Nonprofit Listening Sessions

Child Care

As a result of COVID-19, many families have been forced to find alternative child care options. The balance between work and family is more difficult to manage, especially as several organizations have had to reduce capacity or terminate some of their previously offered services. ARPA funding could help nonprofits rehire child care staff and expand services to Greene County families in need.



Dana Carroll, Child Advocate for Community Partnership of the Ozarks, mentioned that staffing for early childhood facilities is becoming increasingly harder because of the increased demand and competition for frontline workers. Staffing issues have forced some operations to shut down. The need to sometimes quarantine children who are in child care facilities is another complicating factor

Holly Wilson, Director of Consumer Credit Counseling Service of the Ozarks, reported that many low-income mothers (mostly single mothers) are struggling because they have to take care of their children instead of looking for work or working.

Collaborative Projects

The majority of nonprofit representatives showed interest in collaborating with other nonprofit organizations when utilizing ARPA funding. Greene County officials encourage collaboration between organizations to maximize existing resources. Capital investments will help curtail current problems while simultaneously directing investments towards long-term solutions.

Nonprofit Listening Sessions



Equity and Inclusion in Greene County

Monica Horton, Board Chairperson for Ujima Language and Literacy, advocated for special education and discipline for minority students. Horton warned of the existing school to prison pipeline issue.

The representatives from A Girl Like Me mentioned that girls of color are having difficulties connecting to their cultural identities. They need pathways and opportunities to connect with these communities. The pandemic largely isolated them from this opportunity.

Representatives from ALAS mentioned that much of the LatinX/Hispanic community has barely finished elementary school, so they have almost no computer literacy. The community also tends to distrust the COVID vaccine (as we can see in the low vaccination rate among LatinX/Hispanics in our area). Their main source of information is mainly based on social media platforms (Facebook, Tik-Tok) which is the only type of technology that they know how to navigate in a very basic manner. There is a lack of education in the community. An effort needs to be made to meet them where they are to provide a higher quality of life.

Darline Mabins, Executive Director of Minorities in Business, highlighted the areas in which minority owned businesses need assistance. For example, minority owned businesses often are not informed on how to access government funds or assistance. Primarily, they need assistance with the documentation and requirements needed to qualify. Finally, many are worried that there is fine print that they will miss. They worry about the amount of money they expect they will have to pay later down the road.

Equity is an important aspect of ARPA's purpose. The Federal Government expects Greene County to report and explain how funds were used in an equitable manner. To meet these expectations, the ARPA team recommends the Commission set aside applications and funds solely for minority owned businesses. Similarly, it would be in the Commission's interest to provide applications in multiple languages to accommodate the diverse linguistic makeup of Greene County.



Nonprofit Listening Sessions

Family Assistance

COVID-19 has transformed how families operate with reduced resources, limited incomes, and fewer lifelines. Services are needed to help families with mortgage and utility assistance, food and nutrition, education retention, and overall health. ARPA funding would help nonprofits deliver needed support and provide financial assistance across Greene County.

Christie Love, Founding and Lead Pastor at Connecting Grounds, mentioned that they need help finding transitional housing for entire families. Too often, children are being separated from their parents in these situations. Additionally, Love highlighted the utility of after-care and follow-up programs to ensure foster care children are given sustained care and avoid reentry back into the foster care system.

Public Health Improvements

Greene County nonprofits have taken several steps to pivot their offered services towards alternative delivery methods. While these services have become more accessible, it has not been without added challenges. In-person services have reduced capacity in order to adhere to medical requirements. Meanwhile, Greene County citizens are expressing a desire for more comprehensive and robust safety practices to build back consumer confidence.

Leslie Forrester, Executive Director of Springfield Arts Council, and Becky Overend, Director of Sales for Springfield Little Theater, detail the increased need for infrastructure upgrades including HVAC systems and sanitation stations that would help return Greene County residents to indoor facilities. In addition to these new expenses, rising operating costs during colder months will require greater financial assistance in order to keep small business and cultural centers running.

Elizabeth Avery, Vice President of Youth Services for Burrell Behavioral Health, reported an increase in suicidality in Greene County. This increase was seen especially in youth. Avery mentioned the need for a 24/7 mobile crisis response service.

Nonprofit Listening Sessions

Supply Chain

The global pandemic has made the transportation and delivery of goods and services to consumers markedly different. Long lines at grocery stores coupled with depleted quantities has made many Greene County families strapped for resources and in need of assistance. These troubling conditions have made inventory restoration a primary concern for local organizations.

Kelly Brown, the Community Engagement Director of Diaper Bank of the Ozarks, noted the supply chain issues they were experiencing. Supplying mothers with necessity items was becoming increasingly difficult.

Bonnie Keller, President and CEO of Ronald McDonald House Charities of the Ozarks, continued the conversation about the supply chain by noting how the amount of donated goods from volunteers has decreased. This has placed an increased responsibility on existing staff to stretch remaining resources as long as possible.

Rehiring/Retaining Staff and Volunteers

Small businesses and nonprofit organizations around Greene County have faced new logistical concerns over the quantity and quality of their workforce. In a Springfield Business Journal survey conducted in October 2021, 85% of respondents reported that their company had open positions that they were struggling to fill. Meanwhile, many people have switched careers or pivoted to different areas in order to earn liveable wages. Citizens in Greene County need additional support to learn applicable job skills.

David Myers, Associate Executive Director, and John Pace, Director of Outreach and Workforce Development at Victory Mission, highlight the success of an in-house workforce training program that has helped their residents find jobs. They note that individuals with these hard-working characteristics are located all around Greene County, however, employers need to widen their hiring pools. While this has aided some of their residents, lack of knowledge and limited employer provided transportation continue to be barriers towards sustainable wages.

Nonprofit Listening Sessions

Transportation Infrastructure

Restoring Greene County infrastructure has been a long-held priority for individuals and organizations. The current system of roads, bridges, highways, and trails, while serviceable, could be renovated and improved to accommodate the rising county population. ARPA funding provides a unique opportunity to finance a variety of capital projects that would strengthen existing infrastructure and help low-income individuals who are most affected by poor quality transportation. In particular, more sidewalks, crosswalks, and public transit systems would service individuals who use alternative transportation methods.

Mary Kromrey, Executive Director of Ozarks Greenway, detailed a unique possibility of ARPA funding that would expand the current network of trails and paths around Greene County, improving social determinants of health while promoting more eco-friendly practices. Additionally, these green investments would reduce traffic noise and help disproportionately affected groups who rely on more cost-effective transportation.



Nonprofit Listening Sessions

Summary

The hardships experienced by Greene County nonprofits during the COVID-19 pandemic have left many looking for alternative solutions and additional financial resources. Even in the face of mounting pressures, local agencies found a way to provide needed services to county residents, offering a crucial lifeline in a time of need.



The experiences detailed by nonprofit representatives at the listening sessions presented a unique look at how federal funding helped assist in ensuring programs could stay afloat. Greene County found incredible value in the stories that were shared, and took a diligent record of the ways that local funding could be directed to address immediate needs. There were several common themes identified throughout the listening sessions. These include:

1. **Labor and Employment** - Nonprofit leaders described difficulties in filling employee positions. The same labor market issues occurring nationally are also affecting our local nonprofits.
2. **Volunteers** - Agencies noted a shortage in the number of volunteers. This was attributed to many volunteers being seniors and their concerns related to the national health crisis. The change in volunteer help also affects organizations' budgets. Volunteers have historically provided many hours of valuable assistance which now in many cases has to be paid for or some program operations cannot be accomplished at some level.
3. **Funding Challenges** - Many nonprofits noted they had to cancel or were unable to conduct many fundraising events. In effect, some fundraising events were held online or at reduced capacity. While these events helped to some degree, they were unable to replicate the monetary contributions prior to the pandemic.

Nonprofit Listening Sessions

Summary

4. **Quarantine Closures** - Individuals exposed to COVID-19 were forced to undergo extended periods of absence away from work or volunteering. As a result, the consistent provision of services to citizens was uncertain. This was also noted in the child care arena if a staff member or child needed to be quarantined which could result in classroom cancellation, ultimately affecting families. Nonprofit leaders noted the importance of providing supply kits or resources in order to best equip their workforce to remain healthy and safe.

5. **Increase in Demand for Services** - In order to combat the negative effects of the pandemic, many county citizens turned to nonprofits for help. This increased the caseload significantly and forced nonprofits to stretch their already diminished resources even thinner. Additionally, the staffing issues and necessary health precautions made it more difficult to administer services.

6. **Other Pandemic Related Issues** - There were several additional concerns that nonprofits expressed that were unique to their individual operation. Foster care agencies noted a market increase and additional challenges in assisting their serviced populations. Pet adoption agencies reported an influx of returned pets as the pandemic fluctuated, straining their facilities and requiring additional work from their employees. Individuals experienced more grief and feelings of sadness as loved ones passed away caused significant increases in grief support and counseling agencies. The depleted network of coworkers, peers, and family members made it more difficult to emotionally respond and feel optimistic. Additionally, health disparities across demographics exacerbated underlying social and economic problems. Specifically, Latino communities reported an inability to access informative resources related to the global crisis. The examples included are not an exhaustive list and will continue to change as the pandemic develops.

By continuing to collaborate, county officials hope that nonprofits can propose creative solutions to existing problems and long-term strategies to target chronic issues.

Greene County Needs Assessment Equity Plan



The ARPA funding legislation clearly speaks to an equity focus for projects that receive ARPA dollars. This is a very important designation that requires focus and intentionality as the COVID-19 pandemic has clearly identified and revealed significant disparities in the impacts of the pandemic. These have occurred in a number of areas and are still reflected even in vaccination rates.

It is highly recommended that the county adopt an equity thread to assist in addressing some of the pandemic consequences. The areas that are of concern refer to underrepresented and underserved groups in our communities. Because Greene County is such a broad geographic area with a diversity of communities and populations this is not necessarily a one size fits all solution. We need to be sensitive to the unique needs of various populations and historical trends that affect various individuals in our county.

The President's executive order defines equity as *"the consistent and systematic, fair and impartial treatment of all individuals, including individuals who belong to underserved communities that have been denied such treatment."*

At a recent NACO presentation, Wardell stated that "at its core, equity means centering those communities, not excluding others but making sure you're addressing the needs of communities and individuals either willfully or unintentionally excluded previously."

To ensure those in need are being met in the most meaningful and transformative ways possible, Wardell highlighted the importance of ensuring individual programs and initiatives are delivered and executed in equitable ways. Our equity recommendations attempt to keep this viewpoint in mind as we consider the needs and opportunities in our communities.

Greene County Needs Assessment Equity Plan

“I would encourage us to think about the ways in which the pandemic has exacerbated inequities in our communities,” he said. “Deciding what to invest in is only one piece of the puzzle,” he said. “We can’t make an investment decision and walk away. We have to be invested in making sure that those programs and initiatives are delivered well and in ways that are advancing equity.”

To advance initiatives in equity, Wardell offered a few key principles:

1. Design for ‘hardest to reach’ and most in need
2. Design programs to ensure everyone will benefit – think about awareness, accessibility
3. Building short cycles of feedback to inform qualitative discussions

Greene County has definite pockets of underrepresented and underserved communities who can benefit from the equity focus of the ARPA program. There are a number of ways this can be accomplished. Our goal is to be true to the spirit of the legislation and adhere to the principles outlined. The increasing diversity evidenced in the census data also speaks to the changing population as the county grows as well. Further, the nonprofit listening sessions provided additional evidence of some of the growing needs as well as unique impacts of the pandemic on underserved communities.

We are making these initial recommendations to address an equity lens in the county ARPA initiative:

1. Applications specifically include a question about how grant recipients intend to insure services and programs are available to underserved and underrepresented groups in their communities. ‘
2. Grant recipient demographic report will be required as part of agency final report.
3. Targeted outreach to underserved communities informing them of application process and the assistance available.
4. Consideration of an Equity fund with ARPA dollars targeted for specific programmatic initiatives in communities that have been disproportionately impacted by the COVID-19 pandemic.
5. Consideration of a targeted business outreach program to assist underrepresented businesses access ARPA programs.

Needs Assessment Summary & Recommendations



Greene County is a beautiful geographic area comprised of a lot of natural beauty, economic opportunity and a reasonably affordable cost of living. As noted in this report it has historically been a fairly homogeneous community from a racial and ethnic standpoint but the last decade has provided an interesting glimpse into the changing demographics for the area and some strong hints of the future.

There are some aspects of compiling a needs assessment for such a large area that present some challenges. Greene County is very fortunate to have a very prominent regional city which is Springfield in its boundaries but it also has small towns, fast growing municipalities as well as farms, ranches and rural areas. Together they make a rich county with many opportunities for growth, lifestyle and a variety of occupations. But from a needs assessment perspective it may not be a one size fits all in terms of community priorities. We have already identified the top priorities from the Community Survey and referenced other sources of community input that help to describe the various needs of our areas.

There are areas of Greene County that need better broadband and improvements in sanitary sewer. Conversely, there are many parts of the county for which these are not really considerations at all as they are more urban and these systems have been put in place. Of course, they are dealing perhaps with other infrastructure needs or the possibility of replacing or upgrading aging water systems.

Needs Assessment Summary & Recommendations



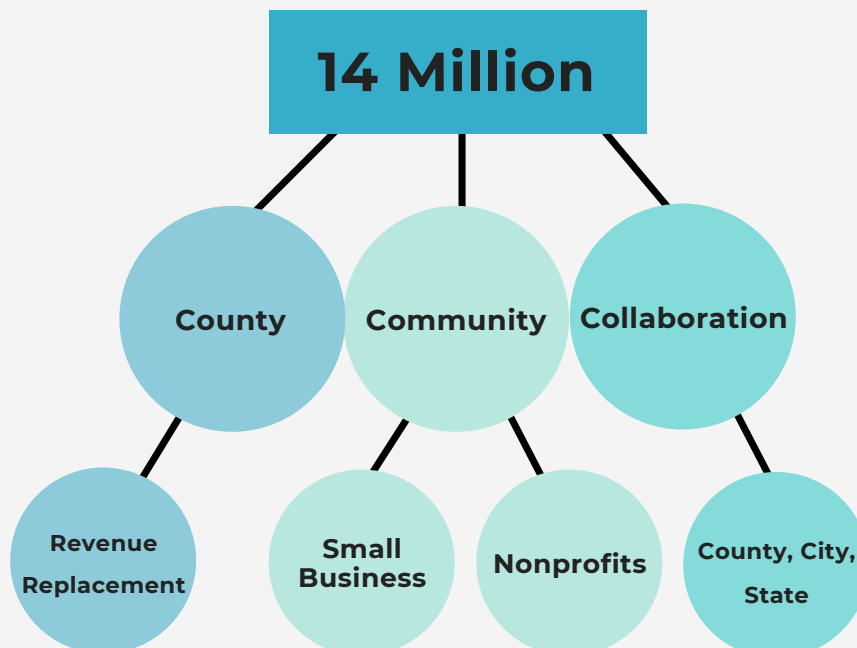
Population density varies as well within the county boundaries reflecting another set of needs as some communities may be facing rising crime as population grows somewhat rapidly and cities face new challenges. The shortage of workers has been a theme throughout the past year as well as the pandemic employment workforce has changed many aspects of the labor market.

The recommendations in this part of the report seek to acknowledge and reflect all of these factors and at the same time respond to the eligible categories of funding according to the ARPA guidelines and the goal of economic recovery. The Commissioners and staff at Greene County are very appreciative of the valuable assistance of many sectors of our community for their input in the survey and listening sessions. We want to also state that we hope the Community Needs Assessment document will be a living document that will be updated as we go through the multiple year process of the ARPA initiative. We envision several rounds of application funding and programmatic opportunities. As our needs emerge and we are able to respond this can be reflected in this document.

Needs Assessment Summary & Recommendations

We are proposing twelve (12) categories of priority needs to reflect the input from the public and the existing data sources that we have utilized to inform this report. The county received its first allocation of \$28,464,260 on May 19, 2021 to respond to community needs as well as the allowable allocations to county revenue loss. We are recommending for the first funding phase to allocate \$14,000,000 to the ARPA application process. The revenue replacement, which currently stands at \$2.82 million, would be used at the discretion of the Commission if and when a decision is made to make this allocation. We would recommend that the Commission consider allocating the \$14 million into 3 broad categories of community, collaboration, and county. The Community category prioritizes and responds to the requests of nonprofit organizations and small businesses. The Collaboration category would be set aside for collaborative projects between the county, city, and/or state. The County category would be utilized for the requests of county officeholders and possible county facility and operational needs.

As of November, 2021, 26 organizations (businesses, nonprofits, and government entities) within Greene County have submitted projects to the Commission for ARPA funding consideration. Project requests have added up to an estimated \$80,907,907. This estimation excludes the projects that did not provide an estimated cost. A spreadsheet/table of these requests can be found in Appendix B. An application process will be used to award the funds. We will use the top priorities as the primary way to rank and recommend grants.





Needs Assessment Summary & Recommendations

Greene County ARPA Timeline



May 19, 2021 – Greene County receives the first allocation of ARPA funds



September through November 2021 - Greene County ARPA Team conducts a Needs Assessment Process



September 2021 - Greene County ARPA Team conducts the Community Survey



October & November 2021 - Greene County ARPA Team hosts Nonprofit Listening Sessions



November 2021 - The Needs Assessment Report is presented to the County Commissioners



November & December 2021 - Greene County applications for ARPA funds are developed



December 2021 - Greene County applications for ARPA funds are announced



January & February 2022 - Application process implemented



May & June 2022 - ARPA 2nd phase fund allocation (2021 funding)



Fall 2022 - ARPA 3rd phase fund allocation (2022 funding, 1st half)



Spring 2023 - ARPA 4th phase fund allocation (2022 funding, 2nd half)

Needs Assessment Summary & Recommendations

Volunteers

During the administration of the CARES program an Advisory Council was formed consisting of over 30 volunteers throughout the county. The council members participated in numerous meetings and did an incredible job over the course of the program. The CARES final report recommended that the volunteer effort if there was one be very different in any subsequent programs.

The ARPA program has a funding cycle over three years in length which would require a fairly extraordinary effort to incorporate volunteers in a meaningful way. Volunteers often provide a great sense of community pulse and perception of issues on the ground level.

Initially, we are recommending that an internal staff team participate in recommendations for the Community Funding cycle. These recommendations ultimately go to the Commission for decisions. In addition, the application process will be designed to make funding amounts easier to determine especially for small business.

If the Commission would like to have a volunteer component in the ARPA program several suggestions would include:

1. Smaller size.....9 to 12 members.....half from Springfield and the others from the county.
2. Monthly meeting....Because this is a longer commitment, a less vigorous meeting schedule would be highly beneficial.
3. The committee might serve more in a supportive category which is to review (second voice) for the decisions of the internal committee.
4. Continue to serve as "eyes and ears" in terms of the community pulse.

This would be suggested for a 2022 implementation if this is a component the Commission is interested in.



Needs Assessment Summary & Recommendations

As a bit of review, after considering all components of the Needs Assessment report, the top priorities that were previously identified are:

1. **Mental Health Services**
2. **Affordable Housing**
3. **Services for Unhoused Persons**
4. **Vaccinations and Vaccine Information**
5. **Small Business Economic Assistance**
6. **Diversity and Inclusion Efforts**
7. **Assistance to Nonprofit Organizations**
8. **Household Food Programs**
9. **Broadband**
10. **Childcare and Services to Foster Youth**
11. **Water and Sewer**
12. **Substance Use Services**



These 12 categories provide a holistic overview of the problems that Greene County citizens face in their daily lives. The first five priorities listed are consistent with the Community Survey results and reflect the overwhelming support for those categories from survey participants. Next, “Diversity and Inclusion Efforts” recognizes the necessary strides towards equity and inclusivity highlighted by the Springfield Inclusiveness Survey and the 2020 survey on the Community’s Diverse Young Professionals. “Assistance to Nonprofit Organizations” underscores the importance of service providers and the valued comments left by their respective representatives at the listening sessions. “Childcare and Services to Foster Youth” combines childhood services into one category that includes improvements in education, retention, afterschool programs, and foster placement. The final two categories incorporate the input from citizens that live outside of Springfield and are important in informing how funds are allocated to small municipalities.

While these findings are important, some changes need to be made in order to best address the county’s immediate needs. Vaccination was omitted from this final list as the health department has allocated funds for Springfield Greene County to set aside for its citizens. As of today, vaccinations are readily available throughout the county and at this time no additional funding is needed or recommended.

Needs Assessment Summary & Recommendations

Diversity and Inclusion are being addressed through an overall equity plan consistent with US Treasury recommendations. Approved agencies will have to demonstrate equal service and assistance to underrepresented and underserved demographics. Finally, it is important to note premium pay for public sector employees would be the next ranked item. However, the Missouri Constitution precludes this being available to local officials to award to public service employees.

With these considerations in mind, the rankings have been updated as follows:

- 1. Mental Health Services**
- 2. Affordable Housing**
- 3. Services for Unhoused Persons**
- 4. Small Business Economic Assistance**
- 5. Assistance to Nonprofit Organizations**
- 6. Household Food Programs**
- 7. Broadband**
- 8. Childcare and Services to Foster Youth**
- 9. Water and Sewer**
- 10. Substance Use Services**
- 11. Aid to Tourism, Travel, and Hospitality Industry**
- 12. Education Assistance to Early Learning**

This final list more accurately recognizes how Greene County has already made efforts at mitigating the negative effects of COVID-19, and ensures a more appropriate and mannered response.



Needs Assessment Summary & Recommendations

Individuals who have experienced exacerbated difficulties during these tumultuous times need a proper and effective response. Economic insecurity, housing inequities, and poor health outcomes continue to present citizens with seemingly insurmountable obstacles.

These citizens will not be left alone. Greene County recognizes the unique opportunity ARPA funding has to reverse the negative trajectory and improve the conditions for all citizens. By conducting a thorough, comprehensive, and richly detailed Needs Assessment report, Greene County has placed itself in an opportune position to allocate funds to small businesses and nonprofits that will best address the needs of their constituents. Greene County will continue to uphold integrity and honesty in the application process to ensure no priority interest is left unaddressed. County officials and leaders believe that the distribution of immediate relief combined with investments in long term capital improvement projects could set Greene County on the road to unheralded advancements. The end of the global pandemic continues to be the ultimate goal, but for many citizens in Greene County, their struggles could soon see some much needed relief.



Appendix

Appendix A - Community Survey Written Responses

ID	Is there another community need that you would like to specify?
4	Test
6	Transportation infrastructure around SGF
10	Free N95/KN95 masks for all residents and particularly for all school children.
11	Collaborative capital and/or economic development projects in cooperation with cities and/or colleges, universities and public school districts.
13	a better survey than this is needed
17	There is a coalition of churches including Brentwood Christian, my church, planning to purchase a building to provide low-barrier, cold-weather shelter to unsheltered people every night during the winter. They are trying to raise \$175,000. This seems like a no-brainer to use the money for considering that extra shelter beds will reduce crowding and spread of COVID. A public health nurse to offer vaccinations at places where homeless people congregate would be another excellent use of the money.
20	I think the city should buy up unrented houses/ properties that slumlords refuse to maintain and use them to house unsheltered people. The city should also impose a rent cap to take action against the skyrocketing rent prices and create an ordinance that prevents landlords from discriminating based on prior eviction status
23	housing for the poor and homeless
24	Division Street has been horrible for decades. Just once, could we do it right?
29	Funding to SPDAT program and to Harmony House.
32	Invest in the community for the long-term. Support efforts that will create more good jobs for the future.
34	Health care workers
36	Support health care providers, doctors and nurses, hospitals and ER centers who have been so overwhelmed by Covid 19
38	Direct cash aid to local families.
41	Getting individuals trained to work the multiple job openings around our community.
47	Springfield and Greene County desperately need emergency shelter for the homeless and affordable housing for low income community.
48	I don't understand why rental assistance was not an item on this survey. People with lower incomes can't afford to own, but they can rent and these folks need help with their rent! Another option I would want to see is for local government to pay the extra unemployment benefits that our heartless governor cut off a while back. These payments are not encouraging folks to live the high life and not look for jobs, they need that extra money to put food on the table, pay the electric bills and put gas in their cars so they can go to job interviews. Neither of these things would benefit me personally, but I know lower income people need help as soon as possible!
49	Community gardens
56	Improve internet access
57	Public water extended to all residents impacted by the TCE issue.
60	I will say with a 47% county vaccination rate and the Delta surge.. All focus should be on increasing vaccination rates among those eligible.
61	Extra payments directly to essential workers who have worked throughout the pandemic.
62	The County needs to provide assistance to local nonprofit organizations that provide services for the homeless and those at risk of homelessness. With nearly 1 out of every 4 county residents living in poverty, this is a great need.

Appendix

Appendix A - Community Survey Written Responses

64 Give some of that money to the people in the form of a stimulus check. Cap the check at individuals who earn more than \$50,000. That will cut out a lot of red tape. The problem with giving the money to non-profits to distribute is that it often doesn't get handed out because there are so many hoops to jump through. Just give the relief directly to the people.

65 How about the nursing homes? They have been saddled with increased expenses due to Covid and stringent government regulations without any financial relief since last year. Your list of choices show nothing but social programs which have nothing to do with Covid related issues. Mental health? Household food programs? Substance use? Housing support?? Have you not looked at the help wanted signs throughout the county? Get a job and you have immediate household food and housing support both which assist in mental health and reductions in substance abuse.

66 Border of Christian county

68 Replenish CFO's coffers for making aid available to nonprofits early during this pandemic.

69 Insuring low/middle income families can handle the bill of being in the hospital for Corona virus so it's not a financial death sentence....or best yet attempt another lock to and actually pay everyone to stay in and compensate businesses that do shut down for the lockdown

70 There is an over abundance of rescued animals due to spay/neuter services being unavailable during much of 2020/2021 which resulted in countless kittens and puppies being born and dumped. The Rescue organizations in our communities are overwhelmed, including the local animal control departments. They could use help.

72 Support the first responders in our county with premium pay and quit supporting the people who do not want to work! First responders have worked throughout the pandemic while making less than unemployment.

73 We need police officers trained specifically to deal with mental health and homelessness issues, and they need the resources to be able to send these people in a direction that will help them and not just move them along out of the public eye until they commit a crime.

74 I am VERY against purchasing a sports complex on the far south side of Greene County with these funds.

77 Disability!!!!!!!! Natural Medicine!!!! Holistic Real Doctors Supported! Your Garbage city organizations and their leaders are Reject-able especially the Health Department Nazis! They are Killing people the Hospitals are Medical Death camps Now!!! Great Job. We need To be Detached from the Federal Governments BS!!! Why don't you all see the Hell they are creating?!!!! What is wrong with you people. You all even are using the Woke Cdc Slang! Homeless people are Homeless! Some families are barely able to pay rent and do a lot for this community and are one the verge of being Homeless!!! You all don't care about much. It shows! We will take back this country and God has a plan! Be Real now or face A harder situation later. This government will only destroy American more and everyone who follows along with it! The Vaccine is a Bio Weapon you So called Leaders don't have a chance after these Booster shots are implemented. Good luck.

78 To the folks that have all the statistics on homeless. So many in Springfield now the tiny trailers on west chestnut they lay all over park across the street if they don't get a trailer. Looks trashy for people coming off interstate. Is mental health and substance abuse the best way to clean it up?

83 Crime in the county is at a level that cannot be tolerated. The towns and the county need to work together more closely to eliminate murders, rape and the sale of illegal substances.

88 I work in Springfield.

Appendix

Appendix A - Community Survey Written Responses

100	Pay the utilities bills for ALL private residences! Provide better & more extensive public transportation
101	Trash cleanup after homeless, underbrush management
102	Health literacy initiatives
106	Residential treatment rather than outpatient treatment for drug abuse. Focus on domestic violence prevention and mental health. This is Covid relief. Not building a park money nor lining pockets. Non profits keep part of money. That is not how I want my taxes spent. Instead I'd like to see mini-apartments built for the homeless and hotel pods for emergency shelter for dv victims and the homeless. Somewhere close to jobs and Preferably next to a police station. Offer a couple units to officers to keep down crime.
107	We need mask mandates! People are dying and no one here seems to be very concerned. We know they work. Doctors and nurses have been using them for almost 100 years to maintain good health in themselves and patients. Also, more importance of vaccinations and correctly informing people of the benefits of vaccines especially the COVID vaccine.
109	Personal stimulus
110	Close the churches
112	We need to address the shortage of affordable housing in Greene County. Funds could be given to Eden Village to set up another location for housing. Additional funds could be provided to assist those individuals who are behind on their rent payments.
116	Places for the Homeless to camp or park their cars overnight & more showers& laundry services.
117	The amount of homeless and drugs in this city needs to be addressed. It should not be this way and someone needs to take responsibility for the mess and turn our city back into a place where one would want to raise a family.
121	Help small businesses
122	We very badly need to put funds into the hands of local organizations and non-profit mutual aid groups. I'm involved in several groups who're using our own funds and time to educate people on self defense because of the strings of attacks downtown, but I don't believe more police is the option as they've done next to nothing. We're also funding our own supplies for unhoused and homeless communities because the resources are not there and it's about to get much, much worse. Put the funds into the hands of people who will get things done with it.
123	Distribute money to all residents in Ash Grove who makes less than 80,000 dollars a year.
126	We have a poverty and homeless crisis in Greene County that is getting worse. We need a comprehensive plan to address this crisis with mental health and addiction treatment centers, affordable housing, and shelters.
128	Help the homeless ffs you waggers
129	Affordable housing NOW
131	Lower crime and move the homeless out of the West side part of town. Crack down on vagrancy laws.
143	More homeless shelters would be nice as well as decriminalized homelessness.
144	Green space

Appendix

Appendix A - Community Survey Written Responses

	<p>The local CERT program where local volunteers as immediate responders to emergency issues any time 24/7 such as tornadoes, search and rescue and assisting the County manning the PIC (Public Information Center) during local flooding and Health Dept, health alerts like the Hepatitis A at Red Robin Restaurant a few short years ago and the initial Covid pandemic, setting up the testing site daily and early vaccination response.</p> <p>It is given no specific funding as a line item either from the County or the City, yet is carries the name of Springfield/Greene County CERT. It also has one of the rare few units across the country that also addresses animal rescue during emergencies. This program deserves the time, attention and at least</p>
198	some funding; especially since the major portion of its volunteers are Greene County taxpayers.
199	Parks and outdoor recreation
	<p>There is an organization in the county that frequently gets looked over and many citizens do not even know exists, called CERT. CERT is Community Emergency Response Team and is comprised completely of volunteers and falls under the Office of Emergency Management. CERT serves many functions including providing First Aid stations for the Ozark Empire Fair and Route 66 Festival. They are also on call during disasters to help with damage assessment, debris removal, tarping homes, flood cleanup and phone banks. Most recently, members have been working with the Greene County Health Department and Jordan Valley Community Health to assist with COVID testing and vax clinics. They get NO FUNDING from the county, which they should. Funding needs are not enormous, just a set amount in the budget to offset costs to the members - who donate their time and resources. CERT does receive a support from the state through RHSOC but those materials are limited. The group does many things for both the</p>
203	county and city and should receive a line item in the budget.
207	Support for the police department and recruiting and retention efforts
209	the most important are checked above. Thank you.
211	Monoclonal antibody treatment option communication and marketing
216	education in schools about 9/11
220	When covid cases are high, like now, we need drive through testing at least on the weekends, and testing without appt.
228	High quality air filtration in schools
230	Road and sidewalk improvements
	Rental assistance not restricted means testing and with low to no barriers.
231	Back pay for unemployment benefits cut off by Parsons.
	Tell Steve Edwards to pay ALL employees that staff in Cox South COVID Tower unit to get DELTA pay, not just nurses, nurses aide and RTs. Pharmacists, dieticians, therapists - they are all in there still doing their job and get a whopping \$6.25/hr over hourly wage. Everyone is in this together and everyone should be
236	equally compensated.
237	Small business economic assistance
239	Broadband access
240	Measures to combat climate change by reducing greenhouse gas emissions should be the top priority.
241	Domestic violence women and children centers
	Public transportation
	Criminal justice reform: mandatory minimum sentences and rehabilitation, not expensive incarceration
252	that does more harm than good.

Appendix

Appendix A - Community Survey Written Responses

255	Reduce regulations to support new small business & growth of existing. Reduction of taxes, personal, real estate, permits & licensing(business)
259	We need mandatory masking in Missouri
260	Police shortage and crime
263	Testing, testing, testing. The county should provide readily available and free home tests.
265	We are losing to many Nurses in our area due to lower than average hourly rates. They have worked so many hours and have seen so much death in the past year. Most are so stressed out they want to quit Nursing. It would be awesome if as a community, we could support them in some way. Maybe take some of the millions and give them a bonus check.
270	I think households that do not have children should get assistance. Also extra pay for those that continued to work.
271	landlord assistance.
274	Mandatory masking HAS TO HAPPEN. This is so ridiculous. If everyone was required, that would take the politics away. Be the "bad guys" for those of us who are depending on you to do the right thing.
277	Sports Facility Infrastructure, which would help enhance the lives of our citizens and also serve as an opportunity to drive sports events and tourism to our communities.
278	Higher pay for Police and sheriff deputies..until Springfield gets crime under control the city will suffer...
280	Quit wasting tax dollars. This is a prime example
282	Parks and trails and healthy activities.
283	Used the funds for Sports Facilities that will help drive amateur sports here spurring economic development.
285	FAirgrounds
286	Sewer is the main concern for the Willard Community at this time.
287	I believe that a way to help the community, especially the lower income citizens would be to improve public transit and bike infrastructure in order to give people an option other than an expensive car to get around.
288	Sports tourism. With updating old and building new sports facilities, we strongly encourage multiple youth and adult tournaments to come to Spfld.
294	It would be nice to invest in something with a true ROI such as a large anchor sporting facility. Sports tourism brings in millions of dollars each year and helps sustain jobs throughout the hospitality industry - a very important need right now in our community.
300	We need to address homelessness in a streamlined, meaningful way through access to mental health services, substance abuse services, affordable housing, and workforce development. Relying on non-profits to fix the situation is unrealistic. We have an opportunity to do better for our community. Please don't waste it.
302	Housing or accommodations for homeless veterans.
304	These funds should be used as intended. For Covid programs and programs directly impacted by Covid.
305	Doing everything possible to get people back to work and off of unemployment.
311	Rental Assistance
312	I think the money should be used to help any business that was effected by covid or had to close because of it.
313	Mobile showers and bathroom for the homeless. https://lavamaex.org/
317	Rental assistance

Appendix

Appendix A - Community Survey Written Responses

321	Police assistance program.
322	Crime prevention
325	Violent crime, drugs, theft, and the growing homeless population.
328	Mentoring programs, mitigating learning loss, social and emotional health of youth
331	Emergency Shelter Services
336	Talent attraction and retention.
	It would be advisable to reinvestment in sports tourism facilities (like the Cooper Park soccer and softball fields) along with pursuing regional trail development opportunities such as the Chadwick Flyer line.
341	Both represent really strong economic development opportunities for Greene County.
342	Capital improvement. Projects that create revenue to Springfield and Greene County. Will provide returns for years to come.
343	More help for the homeless and those who have addictions to drugs or alcohol. Programs that would help them to get on their feet and be able to take care of themselves independently.
344	Capital investments that support attracting new business growth and talent/workforce to the Springfield region, and highlight our quality of life
349	Law enforcement
350	Emergency shelter for homeless youth
352	more transportation availability and more covered bus stops
353	More shelter beds for those unhoused
357	Low barrier housing
360	Transitional housing and support to help homeless populations, especially focused on young adults who can still be transitioned out of a homeless mindset to become responsible working adults. Also emergency and transitional housing for those with mental health issues
361	Integrated Trail & Transit System
362	The Kitchen's shelter allows for sheltering in place for families which is the best option during Covid-19 as well as they have a very high success rate of stabilizing people!!
369	Please help the homeless population and those suffering mental illness and addiction. Our community is suffering due to these issues more than any other issues.
371	Stafford
373	Need assistance with Workforce Housing in addition to traditional Affordable Housing programs. There is a gap just above where traditional affordable housing programs stop.
376	Storm water improvements in bedroom communities
378	Stafford
383	Invest in underserved areas of the community such as Silver Springs Park and homeless veterans services.
384	I am excited to see that Greene County could completely end homelessness as well as accomplish other things with this large sum. The folks at The Gathering Tree (Eden Villages) would be good stewards of these funds and this mission.
387	No, I think housing is priority.
388	Veteran's Services
390	Veteran's Housing
391	Stafford
393	Stafford
394	homeless population

Appendix

Appendix A - Community Survey Written Responses

396	Daycare for foster children, after school services for foster care children
406	Hazard pay for workers who worked through the pandemic without taking additional unemployment benefits.
408	Vaccinations are top priority. But as a cyclist, I would love to see more bike infrastructure in the city.
409	Homelessness
411	Increasing the number of affordable housing options available in the community.
416	Honestly we should not take their money it is blood money....
420	No
424	Homelessness
425	Emergency services/housing for foster youth, Trauma prevention and education
435	Homelessness in our community
439	A holistic approach toward making sure those asked to quarantine STAY quarantined; all basic needs need to be covered in order for folks to do this. This is a community health concern. Don't make folks choose between a roof over their head or staying quarantined. Additionally we need a comprehensive push, advocacy, etc for all safety protocols to be used (vaccinations, ventilation, masking, etc). We have the science and means to really FIGHT COVID. We have to help our citizens to understand to do these thing together for one another. What can be done to break through the politicization?
448	Squatters invading homes. Time lag in homes being vacant to sell by the city.
449	The Kitchen, Inc. is the only organization in town providing housing (among other services) for the homeless. They have an emergency shelter now and the space on the campus for an additional building. They also need funding for their day to day operation of providing case managers to the folks they put into housing to ensure the people get on back on their feet and stay productive members of our society.
451	incentivize persons (esp. women) to return to the work force by publicly supporting vaccination mandates for businesses, schools and other public county enterprises. Provide positive public leadership for vaccinations for all those who work and want to work, and use funds to incentivize "back to work" bonuses and training programs that lead to a fair living wage. Be the light! Lead with example and action!!
454	Would be great if things like Eden Village could get funded. Also safe places like Veterans Coming Home and/or Kitchen, Inc.
461	Sports fields and upgrade to park facilities to increase the sports tourism market.
463	Upgrade to Park Sports Fields such as the Soccer fields, baseball fields, etc.
464	Upgrade Soccer Facilities so we can get High School Championships here along with other big events.
466	Field improvements to soccer complex
469	We need to update our soccer facilities. All the clubs on the area play and travel to other cities due to better facilities and no competition here in Springfield. Youth sports is a big revenue source that Springfield continues to miss out on bc our fields are terrible.
470	Upgrading soccer fields so groups travel into Springfield instead of families leaving town every weekend to go to KC and St Louis. Tourism/Hotels got killed. Soccer Fields can help short and long term.
471	Lake Country Soccer Fields
472	Lake country soccer field project overhaul

Appendix

Appendix A - Community Survey Written Responses

474	Please improve the Lake Country soccer complex. Upgrades will have an immediate impact on sports tourism dollars coming into the county and will benefit all the companies in Greene County.
476	Greene County Soccer Fields!!!
477	Soccer programs. This will make a huge impact to the kids to stay healthy and stay away from drugs and on their electronics. It will prevent depression if they are busy. It will drive business to our local hotels and restaurants when we hold tournaments.
478	Soccer Fields need upgraded at Lake Country.
480	Outdoor activities for better health- more trails, more safe bike routes, improved playgrounds, etc
481	Improve the soccer fields to bring teams here rather than families have to travel in order to play quality soccer.
483	We want the soccer fields improved. We want our county leaders to know that the soccer complex upgrades will have an immediate impact on sports tourism dollars coming into the county and will benefit all the companies in Greene County.
485	Improve the local soccer fields to increase revenue for the city and county. We have lost SO much income to our community due to poor management and/or improvement of the Lake country soccer fields. This city could host MULTIPLE soccer tournaments if this was improved. Soccer families - like myself - generally have multiple children and spend TONS of money on hotels, food, and other items while going to OTHER cities for soccer games and/or tournaments. PLEASE do something with these fields! Springfield and our area deserve better - not just the local "club" team that is here.
486	Our soccer complex could really benefit from updating.
487	Improve soccer complex
488	See soccer fields get improved. Turf.
489	For my 5th option of how to spend the funds I would like to see the Springfield Greene County Parks upgraded. The restrooms at all facilities need improvements. Our Greenway trails need mile markers replaced and sections of the trails resurfaced. Our soccer fields also need some major upgrading. Many families travel miles to play soccer and if our fields were improved we could bring those tourism dollars to Springfield/Greene County.
490	Tourism dollars for the city
491	Lake Country Soccer Complex field upgrade to bring in out of town teams for tournaments
492	Upgrade to Lake Country Soccer fields to bring in tourism
494	Improvement to soccer fields at LCS
495	I feel the soccer fields and complex's (specifically Lake Country and Copper) need to be updated it will have an immediate impact on sports tourism dollars coming into the county and will benefit all the companies in Greene County. By offering a regional pull to other locations like Tulsa, KC, St Louis, NW Arkansas to meet for tournaments with state of the art sport complexes to offer.
499	No
501	Soccer field improvements. Soccer industry adds to the sports tourism in the area especially drawing in clubs for local tournaments and special events
502	We want the soccer fields improved. The soccer complex upgrades will have an immediate impact on sports tourism dollars coming into the county and will benefit all the companies in Greene County.

Appendix

Appendix A - Community Survey Written Responses

Would love to see improvements made to the Lake Country Soccer Complex. This area is way overdo for some much needed improvements. The growing soccer community in our area and surrounding area rely on Lake Country as a place to play and practice the game out kids love. Frankly many people are not playing at Lake Country and traveling to KC or to St Louis to play on higher quality fields. Springfield has let a great opportunity go for drawing in teams to come play here by not keeping up with the fields and facilities at Lake Country. Many teams hate ti travels to play here because the fields are awful. I would love for Springfield to consider putting some support, money, time and effort into taking care of and refurbishing Lake Country Soccer Complex.

503

504 Lake Country soccer complex

Need to address all of the vagrants on every street corner now and how to solve that issue before it becomes an issue that can't be fixed.

505

507 Sports and recreation

My family lives in Nixa right on the border of Springfield. We use Springfield for shopping and businesses and I work in Springfield and both of my daughters play soccer for Rush and I have friends who have children who play as well. It's an embarrassment in my opinion that the third largest city in Missouri does not have an adequate turf soccer complex to host other soccer teams and have tournaments in southern MO. The fields at Lake Country are a danger to our kids who play, several kids have been hurt due to the field conditions and hundreds of parents continue to complain about the lack of facilities for this area. This community is so far behind every city we travel to for play. The infrastructure would create jobs and bring in significant revenue for small businesses of Springfield. Please consider supporting kids from all over the Springfield/southern MO. area and finally make a soccer/sports fields complex that we can be proud of.

508

We would like to see the soccer fields improved. We want our county leaders to know that the soccer complex upgrades will have an immediate impact on sports tourism dollars coming into the county and will benefit all the companies in Greene County.

509 Thank you for your time.

511 Turf soccer fields would draw tourism revenue to the area.

The Lake Country soccer complex is very outdated and is need of renovation and repairs. I think upgrades will have an immediate impact on sports tourism dollars coming into the county and will benefit all the companies in Greene County.

512 Tuition aid for children that can't afford it but want to play competitive club soccer.

Updating the Lake Country fields to turf is very important for our children, community and businesses. Turfing those fields would bring in so much more opportunities for the community as a whole and give our kids a better chance to compete like the rest of the state.

514

Most of the above are highlighted to assist the unhoused in Springfield, which have likely only grown in number since With regards to tourism and hospitality support, I would like to see improvements to our local parks and sports facilities. As the largest city in SWMO, we should have premier cycling and soccer facilities. Such improvements, and their impacts on sports tourism, will positively impact the local economy/job market as well.

515

We need to improve the sports complexes in the area. We have a chance to bring several tournament to the area which would bring alot of money to Springfield and surrounding communities.

516

Appendix

Appendix A - Community Survey Written Responses

517 Please consider INVESTING some of this money into Springfield and not just SPENDING it. Upgrading the Lake Country Soccer complex to all-turf fields would make a MAJOR impact in long-term city revenue by enabling Springfield to host large travel soccer tournaments throughout the year.

518 Yes! Lake country soccer complex has done nothing but go downhill over the last 35 years! This complex was once a destination spot for tournaments and tourism benefits that come along with those. The fields should have been all turfed more than 10 years ago. Instead, the city had put the absolute minimum into these fields and now families are forced to travel to KC or St Louis and spend our money in other towns. The benefit to upgrading these fields is year round!!! We play in a league in December in KC and it's packed with other teams from our area because our grass fields are unusable at that time of year.

519 Lake country soccer complex. Our facilities are in rough shape and other teams don't want to travel here for tournaments. Turf fields would allow Springfield to host tournaments and bring in families and money.

520 Infrastructure improvements ... roadways, essential services (police, fire, ambulance, related), community investment/development in green spaces throughout Springfield.

522 After school care for more families at a reduced fee.

523 Lake Country Soccer Field Improvements. This would help families avoid travel to KC/STL and bring revenue to the area!

524 Development of the Local Sports Area where Turf fields allow the city to hold large scale tournaments which will bring in greater amounts of tourism revenues. Springfield is losing out on these revenues as the fields used at Lake Country Soccer are in disrepair and are not useable in incimate weather. Cities like St. Louis, KC Mo, KC Ks, and even Boonville have multiple turf soccer fields and Complexes and now host numerous soccer tournaments and state cups. Springfield will continue to loose revenue and quality involvement in local tournaments until the local venues reach the quality of other large cities. If Boonville can put together 8 turf soccer fields, Springfield, should easily be able to double that number. The addition of turf soccer fields will grow the sport of soccer in SW Mo as well as be a boom to the economy as games/tournaments can then be played all year round, not just on the one lone turf field put in by donators from Greenwood School.

525 Lake country soccer is in dire need of updating and better fields. Sporting events are huge and bring a lot of money into the community. There is no reason a city the size of Springfield can't offer quality tournaments and facilities. I would hope this could be part of the improvement pie.

527 Soccer fields need improvement and will be a benefit to the incoming money for the area.

528 I recommend another Emergency Shelter for the unhoused in our community with a capacity of 40-50.

530 Lake Country Soccer used to be a regional hub for the youth sport. Do to LCS having grass fields and climate change, the fields have been unusable for several State Wide Tournaments. We no longer are asked to host these tournaments. With multiple municipalities funding Turf complexes around the state, we no longer can compete for those tourism dollars. Our local kids have to now travel to other destinations to find competition as the competition has better options closer to them. Keep promoting and supporting our SportsTown USA designation.

Appendix

Appendix A - Community Survey Written Responses

531 Updating to Lake Country soccer fields. They are in major need of assistance. The girls have holes in them and our kids fall and twist their ankles. Other city teams come in and make fun of how bad our fields are. Turf would be nice and easier to maintain and will bring other city teams into Spfd and increase tourism. If not turf, then the really nice grass field that St. Louis has on their fields. They look like turf because of the type of grass it is and it is maintained very short to look like turf. They are amazing to play on for the kids.

532 Soccer fields need to be updated. Turf fields would help bring more people to our town

533 Better commission office with people who care about people. I have called and gotten rude service.

536 Upgraded Sports Complexes to help bring revenue into the community, rather than events going to NWA, Tulsa, KC and STL. Springfield is missing out on a large economic boost that other city are capitalizing on with all turf complexes.

537 More stoplights to make morning commute and school drop off safer

538 Improvements for city soccer facilities to draw in tourism, tournaments, revenue, and activity opportunities.

540 Turf Soccer complex to increase tourism and athleticism

541 Soccer complex

544 Cooper soccer complex upgrades

545 Choosing only 5 of the above list was incredibly difficult. Addressing the immediate issue of the pandemic has to be the first priority, because until we get a handle on it and increase vaccination rates to herd immunity, our community resources (especially health) will be stretched beyond their limit. The pandemic has exacerbated so many problems already present in the community, and with the end of the eviction moratorium, housing is likely to be an acute problem. This list drives home how much need there is in the community. I checked "premium pay" because it was the closest thing I saw to recruiting and retaining high quality public health workers—the public health department has been doing an amazingly difficult job and needs to be fully staffed (including workers dealing with mental health and substance abuse).

547 Lake Country Soccer facility & fields.

548 Lake Country Soccer facility upgrades. Great avenue yo continue bringing in economic revenue to Greene County and Springfield

549 Keep better care of the soccer fields.

551 Soccer complex

554 Related to travel, tourism, and hospitality, the County should allocate funds to assist in the development of better soccer fields through the Lake Country capital improvements project. Lake Country serves children and youth in both the city and county, as well beyond those borders. The facility brings in teams and their families from surrounding areas, who spend money at our restaurants, stores, and hotels. However, the soccer facilities are inadequate and subpar compared to those available in Kansas City, St. Louis, Tulsa, NW Arkansas, and even Boonville, Missouri, where turf fields abound--Lake Country currently has only 1 turf field. As a result, there are numerous lost chances to bring in multiple teams (and their families) for tournaments and even teams to play in league games. Supporting these improvements gels nicely with the Springfield-Greene County Park Board's recent purchase of the Fieldhouse. In addition, supporting the Lake Country Soccer field improvements makes economic sense, as it would afford increase tax revenue. Please don't pass up this opportunity to make Springfield and Greene County more competitive with other areas with soccer complexes.

Appendix

Appendix A - Community Survey Written Responses

555 Improvements to the Greene county/lake Country soccer fields to draw others into the area for tournaments which will help lodging, restaurants, retail, and other businesses in the area as well.

Upgrade soccer fields! The soccer complex upgrades will have an immediate impact on sports tourism dollars coming into the county and will benefit all the companies in Greene County.

556 Mental Health services are so important in our community for families. We are lacking services in mental health support that our community deserves! We need more options for kids and adults!!!!!!

Our soccer facilities are so far behind. I've been coaching youth soccer since 2009, and there are so many teams that travel to Kansa City for LEAGUE games.

When we go there, everything is turf. There are 4 major complexes, all with 6-10 full size fields.

It really is a shame that all that money and time spent driving to KC couldn't stay local. Soccer is a growing sport in the US. Most SWMO high school teams play on turf, meanwhile there's only one turf field in Springfield for them to play on as youth, and is often being used by Greenwood, or other big teams.

I have three kids who all play the sport, and I'm sure they will all be adults before anything gets improved, but for the sort of Springfield to pull in tourism \$\$, these sad facilities need improved.

562 This fall, my family will end up driving to KC 9 times for soccer. Soccer families are generally educated, employed, and spend \$\$ on sporting goods, restaurants, and lodging.

564 no

566 Improve the soccer fields @ lake country soccer complex. Turf fields to replace the grass fields

567 I would like to see funds allocated to improving soccer facilities to attract quality tournaments and draw associated tourism revenue.

569 Upgrade soccer fields and complex which will have a huge impact on sports tourism dollars.

572 If you want to aid to bring in tourism dollars, improve the soccer fields and facilities at Lake Country in order to host major tournaments and events. You should see the number of people that come into a community during these tournaments but our fields and facilities do not even come close to compare.

Need turf fields.

573 I believe some funds should be allocated to help renovate and improve the Lake Country soccer fields. Our fields used to be some of the best in the midwest. While they are still adequate, the facilities that have been built over the past 5 or so years in Kansas City and St Louis are much better. If this area wants to be able to attract teams to come and compete here for tournaments or leagues, then we have to invest in our facilities immediately.

576 We need diverse representation in community leadership

579 Economic Support - Develop Silver Spring Park

580 Develop areas for Springfield minority communities such as Silver Spring Park

581 Bolivar Branson

582 Economic development for DBE, WBE, MBE business with a focus on ethnic business owners

Appendix

Appendix A - Community Survey Written Responses

583	Arts and cultural fairs, exhibits, and community engagement
586	Ethnic economic development
587	Minority male development
588	Small business restoration and business workshops for the youth
591	Christian
593	Job Training / Employment Support / Family Services / Substance Abuse / Mental Health
594	Health and wellness for women
598	Improvement to soccer fields. As a parent who has to travel with my child to KC to play soccer, I see what a great need we have in this area. With a new soccer facility, tax dollars could stay in Greene County.
601	Population growth.
605	Businesses will need a lot of support with the new vaccine mandate. Robust testing support will be essential.
607	Key road maintenance, Numerous city streets are horrible
612	Anything that helps our economic development efforts. Supporting our small and large businesses so they can continue to keep people employed. Resources to train up our workforce.
613	Growing our workforce, every store in town has a "Help Wanted" sign in their window.
614	Public Parks Improvements
620	Impactful investments that grow Spfd-area economy. Infrastructure such as streets, sewers,water lines, etc all come to mind.
626	I am surprised there is not a mention of the most important factor we need is a skilled workforce. I would suggest the county invest significant funding into expanding workforce development with OTC and MSU. Quit giving people fish, teach them to fish.
629	Low interest loans to highly leveraged businesses with a three to five year successful sales growth that grew to fast but has high potential with additional working capital.
631	Develop programs and activities for underrepresented and/or at-risk groups in our community
633	Getting people back into the workforce is a huge issue. Childcare is one impediment, but transportation is another one.
635	Policing, first and foremost!
636	Dealing with areas with abandoned homes that create opportunities for increased crime.
636	Investing in our public safety (police, fire, social services)
639	Healthcare
642	Bury all above ground utilities and update all sidewalks...we need a strong vibrant downtown w retail, offices and transportation...Have MSU build a 35,000 seat football stadium next to Hammons baseball park...That will help them join a Power 5 Conference Help Drury double their enrollment w bars and restaurants around their Campus and help them bring Football back...Utilize the square with fun activities Ask Johnny and The Herschends to help w money and ideas to promote the ares w rides sports and triple size of history museum
645	Daylighting of Jordan Creek, use some funds to make this project great!
646	Workforce growth and development
647	The entire list has value in our community. Please use the money as wisely as you possibly can.

Appendix

Appendix A - Community Survey Written Responses

	Programs to help the trade fields (construction, electricians, plumbers, etc.) find and/or train more talent.
648	Programs to help with technology in schools.
652	A portion of the money should be used to invest in infrastructure. Our water and sewer lines desperately need to be updated
655	More police and judges.
656	This is an opportunity to focus unbudgeted funds towards our community's future through job creation and capital investments.
657	Until Springfield/Greene County can claim to be one of the safest and law abiding communities in the country, I believe that the majority of additional funding should go to law enforcement, firefighting, and first responders. We need to show support for these community services and be fully staffed with quality, trained professionals.
658	Integrated health services, e.g. mental, physical, substance abuse, etc
661	AFFORDABLE HOUSING IS THE BOTTLENECK AFFECTING ECONOMIC SUSTAINABILITY FOR A HUGE NUMBER OF OUR RESIDENTS
666	Economic development, job training, educated workforce, workforce expansion, infrastructure for economic expansion.
668	soccer fields
670	Affordable housing is a huge issue. I would also like to see some funding go to enhancement of quality-of-place community resources: libraries, trails, parks, schools, sports facilities, the arts.
673	Sports Facility Needs, Hospitality Job Training and Retention
678	no
681	Homelessness and we need proper steps to ensure that landlords can not evict without you having nowhere else to go. If rent can't be paid or the tenants hands are tied due to legalities then the county can use some of its 2,000,000 grant to ensure that children and there parents are not left to be without a stable, clean, safe place to be.
685	Community safety
688	Crisis center for suicide prevention and mental health awareness
694	I think the grant funding can be used for police services in the city by adding qualified trained officers. Officers with experience should be exempt from physical testing and speed up the process. Greene County deputies and other county employees should receive at least a 10-14% increase across the boards to meet the demands of offering livable wages compared to others outside of the county governments.
697	Stop the importation of low level I.Q labor.
700	Landlords raising rent and putting people in a bind when it's hard enough already.
701	COVID has increased the number of people feeling lonely. I just read a book about promoting neighboring to overcome loneliness. I don't know if groups in Springfield work on improving neighbors but if someone does this would be a great use of resources.
703	Increased pay - or bonuses for our police and first responders/firefighters. These amazing individuals have worked through the whole pandemic - no hazard pay , no extra unemployment etc. They deserve to be recognized for their continued hard work through all of this!
707	Improvements to sports facilities in the city - specifically the soccer complex at Lake Country. Huge need and would generate income for multiple businesses throughout the city.

Appendix

Appendix A - Community Survey Written Responses

710	We need the soccer fields at Lake Country improved. They are not kept up well and this makes it unsafe for the athletes playing there. Improving the fields will bring in more people to our county who will spend money for hotels, shopping, and food because right now most teams avoid coming to Springfield because of our lack of safe fields.
711	small business
713	The Lake Country soccer fields are terrible. Springfield is a fairly large town that boasts a very good athletic scene, yet we have the worst fields in the midwest. My family has traveled for soccer through the midwest areas from Texas, Illinois, Kansas, Oklahoma, Arkansas, etc, and played at multiple complexes. It is not even an argument that Springfield has the absolute worst soccer facilities in the entire area. It should be an embarrassment of a town this size, with its sports history, to offer these facilities to the public. The fields are dangerous due to holes, etc, they don't get mowed before games, the bathrooms are filthy much of the time, seems like there are never any paper towels, etc. This is even on weekends where there are teams/families coming from out of town. They are a joke.
716	Safe pedestrian and bicycle paths all around Greene county cities
718	No child goes Hungry.
721	Homeless and crime/punishment. Harsher penalties for those that break the law. Build more facilities, higher more judges. Create an environment safe for homeless to go and get rehabilitation services.
723	Supports for families and individuals that get workers back in the workplace.
727	Homelessness- help for mental illnesses
728	Do something for the truck drivers in the community. Without them we would not have anything. Everyone keeps praising the nurses and doctors but no one is doing anything for the truck drivers that worked the whole time during the pandemic. They are out there risking their lives everyday to deliver products. Maybe do what the government said at onetime by giving truck drivers a bonus of 10,000 dollars. That never did happen.
730	More police officers, and better pay for them.
734	Support, job training and incentives for homeless and chronic welfare recipients to become productive members of society. In some instances to break the generational poverty cycle, in others the low wage/no training circle. Employers are begging for qualified job applicants. Society can't continue increasing unemployment/under employment and at the same time increasing the homeless and welfare recipients. Thanks for your ear.
740	I would like to see the money spent on something that will impact everyone, not just a specific group of people.
741	Public Safety.
744	We HAVE to do something about the stray/homeless pet population. There are several groups who are swamped with strays and every single one of them is in dire need of funds to keep operating.
745	no
746	Help with Soc Services for children.
752	It would be nice if you could provide each person with a stimulus check. People are still having issues. What better way to give back, then to actually give each person a portion.

Appendix

Appendix A - Community Survey Written Responses

I do not believe that any of the options listed should benefit under the Recovery Act. Enough people are receiving food benefits and housing assistance that are undeserving. I have worked through the entire "epidemic" without benefit. I have payed my bills, made sure my child did his school work "virtually", received no additional funding from the government, but I did all of this as I watched MANY others sit at home collecting more in unemployment than I made. Watched as others receiving free food from programs and throw it away because it was "not up to their standards". Watched as others did not pay rent, but landlords were not allowed to do anything about it. Watched as children, laughed at the thought of actually doing school work because they already knew that it would not matter if they did or not. And I still watch as others complain that they will not work for less than \$15 an hour because it is beneath them. All that I can see that this "pandemic" has created is a bunch of self absorbed individuals that believe they are "owed" something. If they need food - get a job! If they need housing - get a job! If they are a substance abuser - STOP USING!! If you need job training - start at the bottom and work your way up!! The majority of adult people are in the position that they are in because THEY have put themselves there. Stop giving them financial assistance and making it easier on them to live the lifestyle they have chosen. At any point I could have taken a different path and might have ended up without a place to live or food to eat, but I MADE THE CHOICE NOT TO. I made the choice that if it was going to take three minimum wage jobs at a time to provide for myself and family, that is what I would do. I made the choice to not continue to "party" and make adult decisions. I made the choice to stick with a low paying job, learn from others and advance in my position. I made the choice to make sure my children know that NOTHING is given to them, they must work to achieve on their own. You want to know what to do with \$57 million dollars - give it to the people that were still out there everyday working! Give it to the people that made sure that the world kept moving. The ones that collected mass amounts of unemployment, the ones that never payed their rent (but damn sure spent those stimulus checks as soon as they were deposited!) - let them realize that there is not always going to be someone there to

756 bail them out!

758 Financial stimulus for everyone residing in Greene County

Loneliness was at epidemic levels before COVID hit. There are programs that I know of -- even with the local MU Extension office -- that are designed to address this issue and to improve relationships among neighbors. I think this merits some attention/funding as well.

759 Get everyone vaccinated

Complete streets, traffic calming measures, incentives for bicycle use, further expansion of greenway trails.

761 Food Stamp assistance, many people went from max to less than 20 a month.

I live within a quarter of a mile of dsl broadband, but have absolutely no options. I live at 7628 East Farm Road 156, Rogersville (unincorporated area), so I am not that far out. Broadband is all around me, but our small area has none. Years ago, Mediacom quoted our street \$18,000 to provide us with broadband. Literally running the lines a quarter of a mile. This would be from Farm Roads 219 and 156 to 227 and 156. Help! In addition, more funding for the police and sheriff departments. We need more patrols for crime prevention, especially around MSU and unincorporated Greene county.

765 Transitioning electrical utilities to underground locations verses above ground power lines dotting older neighborhoods in Springfield.

Appendix

Appendix A - Community Survey Written Responses

772	Premium Pay for county residents that are employed and worked in that same capacity during the pandemic. Employment in Healthcare, Law Enforcement, First Responders, and Grocery Store workers. The people everyone called Heroes and then practically forgot about when things started getting back to normal. Make this happen so the word Hero doesn't just end up being empty. Thank you.
776	Fully fund an MU Extension program to address loneliness post-COVID and strengthen neighbor relationships across the county
777	Help with the number of Homeless people please.
781	Pay 57,000 unvaccinated idiots \$1000 each to get vaccinated.
782	Get rid of the homeless people. Most of them don't want to work as they get plenty of money panhandling. They should have no demands met. Help the ones that want jobs and ship the rest out of here. Too many of them look like pigs standing there wanting a handout.
785	Care for the frail and vulnerable elderly that don't have access to Medicaid services.
786	perhaps funding to replace the hike in utility bills due to the winter outages. funding for mental health services
788	Fund an MU Extension program to address loneliness post-COVID and strengthen neighbor relationships across the county
790	Child care for working family's.
791	Fund the MU extension for addressing the Covid isolation & loneliness
793	More resources for law enforcement.
795	transportation for people to go to medical appointments
796	Roads and bridges
798	None of the above because they all already get assistance and grants. I can't believe some of these you put on there. You want to help the county? Then give us taxpayers a one time check that is how it should be done. I am an essential worker that both jobs are essential so I had to work. Us essential workers deserve something
801	Yes, homelessness and our crime rates.
802	Help small un-incorporated area Non-Profits maintain/restore historical sites other than social service requirements.
804	Bombard the media with celebrities, such as John Goodman and Patrick Mahomes, telling people to get vaccinated.
809	Can bonuses be given outright to those who were essential workers during shut down and since?
810	Amenities for parks - accessible paths, bathrooms and drinking fountains
811	Engaged Neighboring program expanded!
813	Nursing home aid-increase pay for essential employees/activities and services for residents
814	I think Greene County should do everything possible to ensure there is affordable housing for its citizens.
816	No
820	I am not a baseball fan, but I would like to see resources available to the Springfield Cardinals Hammons Field. I think it is imperative for the upgrades needed to be done so the Springfield Cardinals may continue to be a minor league. I hope this falls under the category of "Aid to Tourism, Travel, and Hospitality". I would like to see the City of Springfield continue to flourish.

Appendix

Appendix A - Community Survey Written Responses

823	Support to Grene County sheriff's department to deal with illegal immigrants, should that need arise. Hopefully not in out county.
825	Growth and development in northwestern Greene County. Lack of ready access to variety of services and retail creates hardship for residents of this area of the county. Growth is focused on southern Greene County where many opportunities are already readily available.
826	Financial support for essential workers who did not receive bonuses/hazard pay for working throughout the pandemic.
827	Premium pay for the essential workers that have worked and risked their lives through this whole pandemic. Healthcare workers especially. They have been on the front lines getting sick, dying and or bringing it home to their family. Reward your "heros".
828	I don't feel this far into the employee storage that there should be a need to give it for mortgage assistance. I feel that to many people are using the grant money as an excuse not to work because there is help out there. Putting it to the homeless and getting them in off the street and into a sable environment were they are able to get a job is more productive for the economy long term.
830	Establish a fund to get birth certificates (in state and out of state) and ID at low or NO COST for residents. That is one of the biggest obstacles to people staying employed and accessing services to keep them from homelessness or indigence.
831	return money to federal govt....this is not real money....just more national debt
832	Escalating crime rate and illegal drugs.
835	fully fund an MU Extension program to address loneliness post-COVID and strengthen neighbor relationships across the county
836	The economic impact on families.. it's be nice if a bit went back to help the people who have worked without ever staying home during the lockdown. Also, we've missed so much work for being sick or quarantined. A stimulus should go to the tax payers.
838	Old water lines need to be replaced ... Bois D'Arc is at crises levels and needs to fix the water leaks and get a new backup well...
839	Local law enforcement enhancement
840	anyone in the community who has not missed a day of work through the 2020 and 2021 year should get some of this
841	Support and bonus pay for all healthcare workers inpt and outpt who have been working during the pandemic and taking care of COVID patients. COVID patients are tested, seen, and managed in clinics, UC etc. not just in ICU. Support and bonus pay for other essential workers such as retail workers, delivery drivers.
848	The public schools
849	People who were receiving unemployment benefits due to the federal program that were set to expire 9/12/21 but Missouri's Governor cut the entire program short in an attempt to stimulate the economy, which only hurt many workers who still cannot find suitable employment, should receive full funding for the weeks from 6/12/21 through 9/12/21. This pandemic caused many to loose their job through no fault of their own and our local economy is missing out on all the monies that would be put directly into meeting the basics via local purchases.
853	House the homeless, get people off the street. clean up our county
854	We need unbiased information(not one-sided media presentations) given to the public and families. This would help in the stress levels and mental health of the public. And putting emphasis on Smaller community support systems.

Appendix

Appendix A - Community Survey Written Responses

858	More help for the homeless. More help for families struggling with rental issues. More help for stray animals.
860	Supplemental funding to some joint MO Dept conservation projects to improve outdoor recreation so people can be outdoors and avoid crowded indoor places and avoid Covid.
862	Essential works who worked throughout the pandemic and put their own health at risk.
866	Permanent plexiglass at the public libraries to protect librarians.
868	Common sense. Believe in science.
869	Public Schools- more teachers, more para's/special education, continue the free breakfast & lunch program.
874	Monetary support for disabled and elderly citizens.
877	Homeless shelters
883	Increased capacity of criminal court system (number of courts) to process cases in a timely manner and reduce the number of prisoners held in the county jail awaiting trial. As opposed to building new jail space to hold even more prisoners even longer.
885	I would like to see more money put into the areas I checked above.
887	More upkeep of roads and bridges and the continued aid of smoother, better traffic flow inside and outside of city.
892	Crime Prevention
894	Law enforcement
896	If the decision is made to provide assistance for employees, make sure the funding is designated for thrm and it isn't designated for administrative staff.
898	Stop stimulus payments to individuals. Give to businesses that have been effected by covid-19. Put workers back to work.
900	No
901	Health and Wellness Support: Encouraging physical activity to fight obesity
905	Give money to Police, Fire Fighters.
907	I feel strongly that NO funding from the American Rescue Plan Act should be directed to the Greene County Sheriff's office.
908	We should use the money to bury the utility lines throughout the county. The next ice storm is just around the corner ;) The amount of revenue lost from 2007's ice storm....oh em goodness.
912	neighborhood or community youth programs
915	HAZORD PAY FOR PLUMBERS/ HVAC PERSONNEL WHO HAD TO HELP IN THE CRISIS DURING UNCERTAIN TIMES NO MATTER THE COST.
919	Loneliness caused by isolation due to COVID and strengthening neighborhoods.
920	Inflation
922	We need to support small business, no mandates, support our Constitutional rights
923	No
924	Pan handlers and homeless
925	Financial stimulus help.
927	Assist homeowners with increased real estate taxes. Provide financial assistance to disabled individuals.
931	programs for veteran's / Veterans as Teachers/all school jobs...this includes all college jobs...
936	Assistance to medical community..mental health for those workers,testing if that's necessary and other needs they may need.

Appendix

Appendix A - Community Survey Written Responses

937	Increased and improved coverage of public transportation beyond Springfield city limits.
938	Allocate money for public servants! Specifically police department because of low staffing and difficulties they have endured locally and nationally last couple of years. Support the police department!
939	Give to the people of Greene county as a one time check.
940	We need more Springfield police officers. They are understaffed. They need to be paid better to attract more people to work in this much needed field of work.
941	Really like to see homeless people off street's committing crime , begging for drug money, arguing outside business lottering around, they need mental health care ,drug treatment,and somewhere they can be accounted for.Also like to see drugs cleaned up in our city which leads to mental issues, homelessness, violence and crime so we can attract families and business travel so we can grow and be attractive to visitors
942	The healthcare workers that have been working day in and day out since all of this has started needs to be shown a thank you for risking their lives.
943	Foster care families
954	The only other community need that I could think of would be policing on homelessness, drugs and crime within the city. Sometimes I wonder what our courts actually do besides book & release. Also adding programs mentioned above could help make policing easier.
959	Providing kits for individuals/families when they test positive. The kits could include: oxygen pulse meter, soap, disinfecting products, thermometer, vitamins, Tylenol, Advil, instructions from local health departments, symptom checklist to watch for, medication options, etc. (This is just a few I thought of right off the top of my head) All we hear on the news is to get tested and about those in the hospital. Surely, 18 months into this we can do better than just wait until someone needs hospitalization.
961	More police.
966	Any help you can use for disabled person services, food, Electricity, water, sewer. Gasoline vouchers.
968	Just divide the 57mil by the number of residents and send em all a check!
970	Téléphone lines and electricity underground
972	There is a terrible drug problem here in West Central centered around Lombard and Kansas Ave. several people everyday are openly selling and using drugs on the street. It brings crime and violence to the area. Several squatters as well.
974	Fremont and Kansas Ave need to be cleaned up. Lots of squatters and drugs
976	West plains needs help too—especially food help, please.
977	Payments for NON government workers who worked the whole pandemic. Health care workers, retail etc.
979	Help with getting child care credit payment s to those who are supposed to be receiving them but are not.

Appendix

Appendix A - Community Survey Written Responses

I would like to see help with helping people like me that make just a little over the income level where you request for help. For example I don't qualify for help with my house payment or food services because I make a couple thousand dollars over what the limit of income is to qualify for these services. I need help just like these people that make a little less than me. I feel like I get penalized for having an education. I can't go to the food pantry or even have help paying my utility bill. I'm also disabled and can't even get help with transportation to and from my Dr. appointments and physical therapy because I make too much AND I'm NOT 60 to be able to ride the oats bus. Taxi cabs are unreliable and Uber costs too much; I can't afford that. These services need to be expanded for us that still can't make ends meet. Also, These services should be available to all regardless of income. Another thing that bothers me is these people that make less than me that get the help have cable, (I can't afford it), Newer smartphones and drive newer vehicles than I do, etc. Thank you.

980

I only picked non profit. Our animal non profit need tons of help. After all they take in the animals and get them well and spay and neuter. Consider helping them all

982

Homeless

985

Immediate shelter for foster children so they are not staying in our offices at night.

988

No.

991

Job development for unskilled workers

992

Yes, stop paying people for engaging in bad behaviors.

1000

I've noticed a substantial amount of this funding has been going towards parks/trails and repaving Springfield streets. These things should be in the counties annual budget, not the American Rescue act. The reasoning is to provide jobs for our area. These "jobs" you are currently proving has been for the city workers that were continuously employed throughout the pandemic. The American Rescue Act is for providing assistance to those who have struggled throughout the pandemic, lost their homes, and struggling to feed their families. And those who were considered "essential workers" are burnt out and has felt extremely unappreciated during this tragic period in all our lives. Trails and parks are not creating jobs nor is it providing the help that our community requires to feed, cloth and shelter themselves. Housing and rental cost are out of control! And the ones that even lower middle class can afford are borderline dilapidated and should be condemned. As a single mom that makes less than \$40k a year, a 3 bedroom home is unattainable in Springfield these days. It's price gouging. Focus on the recovery, make our city safer and help get the cost of living back to a realistic standard.

1006

More officers with better pay and benefits to be competitive in recruiting the best officers on a National scale. Drug intervention programs to rid our community of addiction and violence.

1007

There is rampant homelessness and drug use is the West Central/Fremont/Kansas Ave neighborhood. Squatting is a significant problem there. The homelessness and drugs are drawing violence to the area and this needs to be rectified promptly or people are going to get hurt or lose their lives. There is also a homeless camp on the Greenway that distracts those from utilizing that trail because the homelessness is so heavy and those homeless people chase individuals that walk on the trail. This needs to be looked at with great degree to find solutions and clean the neighborhood up.

1008

Pay city and county employees more for keeping everything going during the pandemic and staying in their positions when hiring new employees is very difficult.

1009

Appendix

Appendix A - Community Survey Written Responses

1014 Community based financial support or utilities cost assistance for essential healthcare workers such as EMT's, Paramedics, Med techs, nurses in hospital settings, and doctors in critical care setting. which seen a huge increase in cost due to lockdowns, quarantines and other covid related isolation's

1015 sporting facility to attract out of town overnight travel; help to attract and retain employees;

1016 more police officers and higher pay and support for officers. more affordable senior housing. more criminal housing jails and prisons, so that criminals are not released because there are no facilities in which to house them. job assistance for people who want to work. don't use these funds to improve parks, trails,entertainment,and things not needed at this time. those things will come when people go back to work, pay their mortgages, pay their bills and feed their families. you have so many needed things on this list and we don't know the cost of each program or what it entails. i do know we need the basics. go slow don't try to give everybody what they want. Do Not Waste This Opportunity to lift your fellow citizens up, instead of making them dependent on government each time a problem arises.

1017 sporting facilities to attract out of town overnight travellers

1018 Stop just spending money, this is costing all of us and the county is in good shape. It is not the job of government to care for me just provide basic services

1019 Rental assistance, utilities assistance, improve public transportation/busses so individuals can reach jobs that would be otherwise unavailable due to having no vehicle.

1020 sporting facilities to attract out of town overnight travellers

1022 Mental health and mental healthcare workers

1026 Money that can be given like the checks to those in need

1030 Payment for all workers during covid-19 work they are the top people that helped keep us up and going truckers,nurses, food service all workers

1031 I happen to think using funds to fully fund an MU Extension program to address loneliness post-COVID and strengthen neighbor relationships across the county would be one great option. Also, I am unsure that this would be within the parameters of the grant, but safer transportation (especially to non-housed individuals) would be greatly supported by the installation of sidewalks on West Bypass, North of Chestnut Expressway.

1036 Give back to the people who work honestly and pay into taxes. If we paid into taxes we should be getting some of the money. It's our tax payers money.

1041 Slowing down violence and increase the police force.

1042 Frontline Healthcare worker pay is still not were it should be

1046 Crime control

1047 Improve ventilation in schools, government buildings, and businesses by providing money, incentives, guidelines, etc.

1051 Utility Help, Bill help

1053 Direct payments to the people living here.

Appendix

Appendix A - Community Survey Written Responses

1. Housing for the homeless.
2. Help disabled and limited income home owners and RV home owners with repairs and improvements to their property and safety and zoning codes.
It improves the city appearance and gives hope to people who need a better place to live.
3. Mental health and drug addiction program's.
4. Violence prevention program's.
5. Food programs for better health.

Hello. I'm a disabled person living on Social Security and SSI in need of repairs to my RV which is paid off, however, my lot rent and other bills leaves no money left for materials and labor costs. If my floor was fixed I wouldn't trip over the cross beams in the living room. There is no program for this type of repairs. There is a program for winterizing the home.

Anyway, thank you for reading my input on your survey.

Sincerely,

1054 Kyra LaFountain.

1060 Incorporate trash service into City Utilities. Poor people can't pay for private trash service!

1064 Convoy of Hope, Crosslines food harvest

1069 Road and bridge maintenance, traffic flow

1070 Services for displaced/unhoused persons

1071 The people

1072 Make trash part of city utilities.

1074 Storm sewer improvements

1076 Get rid of the homeless panhandlers.

1077 Storm sewer construction

1078 No

1079 Veterans homelessness.

NO money for people or organizations who do not wish to be vaccinated. NO money for people who say they do not want government to interfere in their life. We should NOT HELP them if they won't help us get rid of the virus.....

1081

Gun violence in Springfield has gotten out of hand. Chief Williams should find a workable solution to

1084 keep guns out of the hands of violent people.

1087 I think people on disability should get a stimulus check because they are hurting bad to pay bills.

1093 Just please spend money on the homeless instead of sicking the police on them, thank you

1095 naah

Take care of the essential workers who got screwed over working tons of hours and not getting extra pay

1096 like those that were on unemployment.

1097 More focus on getting people back to work rather than handouts. A hand up and not a hand out.

1100 Serve people with this money, not salaries.

Increased funding for Police and Sheriff law enforcement so that salaries may be increased to attract and retain recruits and retention bonuses given to current members of the force.

1104

Appendix

Appendix A - Community Survey Written Responses

1106 Additional assistance for the local county emergency services Fire , Police , EMS, the folks have there hands full as well as the hospitals they all need additional staff and equipment to continue to protect the citizens of Greene County. Remember the first call out is 911. We need these folks and with out them nothing is getting done in our communities. . Thank You.

1108 Deregulation and initiatives that support farmers. Ban CRT! Ban Vaccine mandates! Promote freedom and personal autonomy! Support Green County Pregnancy Resource Centers!

1109 funding for accurate, science based pandemic related communication

1110 Homeless, small business,

1116 Please reward the essential workers/first responders that worked the entire pandemic

Help small business that lost so much revenue over the past year.

1118 Assist non profits that are trying to do good work, but have lost alot of donations over the last year.

1119 Affordable Mental Health Care and community support groups

1120 Roads are horrible within the city. Sunshine and battlefield need a complete overhaul

1121 Sidewalks, bike trails, actually repairing roads needed to be versus ones that don't. Tear down your pathetic crime ridden downtown and build a real downtown.

1123 Home less shelter and food

1126 Hire more police

1127 Bois D'arc

Our foster care system could use educational classes for youths on life skills.

Parent aids with the foster system could be paid better so we can retain quality workers in that field.

1128

1132 First time homebuyer programs for low income households, grants to assist low income families in home repair

1134 young adults who have aged out of foster care

More sidewalks and slow children at play signs speed bumps on neighborhood side streets. After school programs more homeless transports where kids can go to a school they comfortable at. More

1135 neighborhood outreach programs

If possible, a sheltered workshop/transition for the homeless similar to our sheltered workshop for our special needs community.

1139 Also unlimited bus passes for unemployed that don't have transportation provided they get a job.

Replacing parks department playground equipment that has been removed as in Washington Park and add a restroom. The park has become a 24 hour/7 days a week homeless camp for over two months.

1142 There is no restroom. Playground equipment is taken away but never replaced.

1143 Work incentives

1149 Pick up trash. It's out of hand!

1150 Direct payments.

1154 Rental assistance

1155 Foster care, teachers

Appendix

Appendix A - Community Survey Written Responses

1159	There is a huge need for quality parent aides to work with biological parents of kids in foster care. Parent aides can supervise visits and teach parents how to appropriately interact, discipline and care for their kids. Struggling biological parents need quality programs available to them to help them learn how to do better and to learn better norms.
1182	Get rid of slum landlords if they do not keep up their properties. Treat the north side communities and businesses like they are an equal part of Springfield and Greene county. I hesitate to pick any of the above as they have no specifics stated.. So more than likely the larger share will go to the south side of Springfield and Greene County to improve their lot and not to those businesses and people who truly need assistance.
1185	Better police presence in community
1187	sporting facilities, financial relief to hoteliers, assistance with employee attraction and retention
1188	workforce attraction, sporting facilities to increase overnight hotel stays
1201	Provide assistance to Fire Districts and Law Enforcement Agencies.
1202	Fire and Police assistance
1203	Community Risk Reduction (CRR) efforts.
1204	Helping the law enforcement and fire departments inside Greene County would be a great benefit to the community.
1207	I would like to see some protective permanent clear barriers to protect staff at our libraries.
1209	public safety. fire and police for all districts and support .
1215	Public transportation; regional bus system
1217	Noise ordinance.needed.
1225	Can't stress mental health enough.
1229	Crime
1236	Helping the homeless. Fewer commercial buildings. Too many vacant already. We need housing.
1238	Affordable rental housing complexes is a main concern for many families with social service assistance similar the the Y Gardens.
1240	We need to help teachers. They cannot find substitutes and are adding too much work to the teacher's daily duties. The teachers are getting burned out. Expecting the teachers to do this years work and bring all students up to where they should be despite the crazy months of online teaching and mixed days is not working. Also, you should vet carefully and not throw this money at anything/anyone that wants it. Do NOT give it to our public workers! Let's use it wisely!!!! Make sure you are helping people and businesses who were impacted by the pandemic through no fault of their own.
1242	The homeless and drug problem
1245	hazard pay for fire and police the public servants get raped compared to private sector like cox and mercy ems and do a equal or not more risking job and actually deals with covid improving water lines and roads does nothing to benefit front line workers
1246	I think some of it should be used as a bonus for Greene County Sheriff employees and Springfield Police Department employees.
1249	Police do not deserve premium pay, their service is far from premium.
1251	Premium pay for law enforcement
1253	Small businesses in Greene county need help
1254	Reduction of crime.
1259	Foster care and programs for foster parents especially more daycare/full day headstart availability is a big need.

Appendix

Appendix A - Community Survey Written Responses

	<p>The unhoused population I am homeless and have been given absolutely no guidance by anyone with the authority to do so.... I am brushed away and have to struggle to find a safe place to sleep shower n if your lucky enuff to still have belongings u have to find a hiding spot for them if you plan on a day in public at least because in Springfield your shund if your homeless nobody wants a person dragging there entirety in a bag with them all the time it's embarrassing And has made me lose all hope in getting out of this situation I have nomore motivation to do better I am severely depressed and my anxiety on a daily level is at an astounding high I'm worried about my health and if I'ma be ok in a year.....well my comment is excessive but the answer is Homelessness in Springfield build a shelter big enuff to house both and children and put that money into something that will make Springfield Missouri Strong again</p>
1261	Don't make healthcare choices for our community we should be able to take care of ourselves. I've managed just fine on my own don't need your (help).
1262	
1266	Helping young adults start their career and home ownership
	Our homeless citizens are in dire straights. As a civilized society, it is our duty to do more for them.
1271	Affordable housing and mental health care are immediate needs.
1273	Flood control on northside of Springfield
	More promotion of organizations like 4-H, FFA, FHA, the Girls and Boys Clubs--specifically community engagement and service learning opportunities for youth and their parents. I always wanted to be
1274	involved in 4H when I was in grade school.
	Increase income guidelines for food stamps as the inflation has caused many who don't meet the criteria
1277	for food stamps to end up low on food.
1283	Another stimulus for the people suffering with bills and small children.
1290	People on disability need more help
	I dont know what and if this falls under , but do you know how many of us independent contractors delivered groceries, food, and goods during the beginning of the pandemic? We worked long long hours to deliver goods to keep people in their homes that were sheltering in place, why placing ourselves at risk? We didnt have that down time ,nor have we yet, and yet we go out everyday exposing ourselves to keep others safe.
	So i belive the gig workers, such as Spark, instacart, doordash, grubhub, postmates,roadie, uber, and any delivery independent contractor that can proove employment to help others who shelter at home
1295	should be considered.
1296	No.
1299	Independent contractors who were essential during shut down (instacart, lyft, doordash, shipt, Uber, Support/assistance for independent contractors that worked thru the pandemic delivering did and
1301	groceries.
	We were essential workers during the first part of covid, independent contractors (spark, instacart, doordash , uber ,etc)who delivered groceries and food to households and did not shelter at home to keep people safe.
	We kept working and still are, so many elderly and families need and use this service to put food on their
1302	table and to stay safe.
	Support for both performing and plastic arts that have been severely impacted by the pandemic; these are usually primarily supported by people with higher education levels who are the ones most likely to take the pandemic seriously and protect themselves and their families rather than continuing to gather
1303	in large groups.
1305	Gig drivers, Spark, uber, door dash, flex all should be listed.

Appendix

Appendix A - Community Survey Written Responses

I know this may sound radical, but in the last five years my wife and I have paid nearly \$125,000 in federal income taxes. May I suggest the county return the money to the TAXPAYERS and let them choose how to spend their hard-earned money rather than seeking input on how someone else should spend their money.

1367

How about you pay the people who have suffered the most? Healthcare workers. There's nurses in Springfield making \$22x hour because they can't do travel nursing. Ridiculous pay when just down the road in Oklahoma the cost of living is the same and they're starting at \$28. Cox/Mercy have grossly underpaid not just nurses but all healthcare workers thanks to their monopoly. It's time those workers got what they deserve.

1368

1375 Low, No Income.

Alot of county's across the US are giving its people a stimulus check under 30,000 a year . Its hard right now.alot need extra money to servival

1376

1379 Provision of broadband access to houses on the east side of the James River.

Emergency Transportation for low-income individuals. Employers would like some sort of ride share program that could be called and covered when employees can't get to work.

1383

1387 Domestic violence services

1389 law enforcement pay and equipment

1390 A bigger library in fast-growing Republic.

Please consider putting money back into our local parks system. They lost a lot of revenue due to covid and have aging facilities. It is a must for our quality of life.

1391

I think that essential workers that worked through the entire pandemic to make sure everyone else that was staying home had everything they needed should be compensated for hazard pay. For example I work for UPS. We have worked through the entire pandemic, never missed a single day. I think we should be compensated for working under the dangerous conditions of the pandemic, and keeping everything going with all the home deliveries everyone has been doing more of since everyone has been home. People like me need help. We need help with the debt we have incurred over the years of this pandemic. We need help to get back on our feet, and to be taken care of the way we took care of all our communities while everyone else was safe at home with their families.

1397

Given the reliance of southwest Missouri and surrounding communities on a strong physician presence, I would like to see southwest Missouri invest in a 4 year medical school building with the University of Missouri to ensure a strong healthcare community serving our region for years to come.

1400

1401 bigger community center and bigger library - maybe connected?

Fire districts need more help with swindling tax revenues coming in some are struggling now help with ppe, keeping personal same with city and county law enforcement

1411

I live in Bois D'Arc, Missouri. This town has no internet. We need help if this lockdown continues. I can't finish school without it.

1412

1416 Republic need an updated library facility.

1416

Roads, and only those things outline in our constitution.

The government needs to stay out of the responsibility of other's business (churches, non-profits, small businesses). Stop enabling. If they fail, they fail. Individuals and citizen groups need to step up.

1417

Return back to the federal government - they are already placing us into a debt crisis with their spending. rental assistance to prevent evictions and education for people to learn their rights and options as

1424

1425 renters

Appendix

Appendix A - Community Survey Written Responses

Our police and sheriff need to have all the help and support they can get. And our children need to have the best education they can receive. That means all educators need our highest priority. Not trying to be mean but I'm tired of hearing how poor me the homeless are. I live on disability and have since I was 19 years old. I get No assistant and don't ask for anything. I have seen so many people on street corners that could work yet would rather hold up a sign for money. Give everyone of them a ticket and run them off. We just come back from Tennessee and you didn't see panhandling. There was one area for all the ones who didn't work and that's where they stayed. Make a place away from our city and put them there. I'm tired of our city looking trashy because of lazy drug addicts.

1434

1437 Empathy and sensitivity training incentives. The community seems to be too politically divided.

1445 Child Abuse and Neglect

I would like to see more information available on the importance of vaccinations and masking and how important these steps are to keeping the community safe. The decisions not to mask or get vaccinated affect everyone.

1446

1447 Non-profit assistance

1450 Independent contractors like Spark, insta cart, door dash, etc

1451 A larger library branch in Republic would be great!

1453 We really need some help for our homeless community, which seems to just be growing.

1454 I would like to see support to the working class. First time home buyers.

Child Abuse and Neglect- all organizations. decreased staff taking on more serious child maltreatment which in turn increases the foster care system above.

1461

Healthy families - helping to equip parents of children in foster care, to be better parents and build healthy families, through education and resources.

1462

1463 specifically emergency housing for foster youth

1467 Help to the Foster Care system

1472 Respite care, foster care, and parent aides

1477 Trauma Education

1483 HOUSE THE HOMELESS

1487 All I checked are important. The most important is healthy environment for our community's children.

1488 No

I am especially worried about the children that linger in the foster care system and the states inability to find them permanency.

1504

Just to specify, while all early learning is imperative, I'd like to specifically address the underfunded First Steps program. 17+ years without a rate increase. The inability to appropriate funds here through DESE has negated the ability to continue to meet the growing needs of providing pediatric therapies to children with a 50% delay or greater...ages 6 weeks-3 years. These developmental years are monumental in the outlook for their future. Please help!

1515

1516 Small business/entrepreneurship, especially for minority-owned businesses

We have seen an 85% increase in children entering the foster care system throughout the pandemic.

1525 They need our help!

1527 Support of CASA and child serving volunteers

Appendix

Appendix A - Community Survey Written Responses

1532	Housing for older foster youth. The FYI voucher is great but my youth can't get into housing due to the deposit and needing funds for the housing. Then they can't afford first months rent or turning on lights, water, trash, and all the things that come with a new apartment.
1534	The City of Republic is growing and would greatly benefit from a larger library branch.
1536	Public safety.
1542	I would like to see a bigger branch in Republic with more staff to help the employees continue to do a super job helping our community. I appreciate the personal attention I receive now. Basically I would like to see more of the excellent quality of service we already have here.
1543	Disaster preparedness
1546	More assistance for children in foster care
1549	Disabled/retired people assistance with Home repairs
1553	Can't think of one
1554	Homelessness
1556	Case workers need to be paid as the professionals they are!!
1559	air and water pollution
1560	Homelessness throughout the city
1561	Foster care and preventative care
1563	Our community needs a larger Republic Library Branch for our city.
1567	Expand the Republic Branch Library.
1568	Crime and homeless.
1569	Bigger library
1570	Would like to see a larger library branch and a bigger space in the library dedicated to coworking spaces where small home-run businesses could use the office space.
1571	Would like to see a larger library branch and a bigger space in the library dedicated to coworking spaces where small home-run businesses could use the office space.
1572	Would like to see a larger library branch and a bigger space in the library dedicated to coworking spaces where small home-run businesses could use the office space.
1573	Would like to see a larger library branch and a bigger space in the library dedicated to coworking spaces where small home-run businesses could use the office space.
1574	Would like to see a larger library branch and a bigger space in the library dedicated to coworking spaces where small home-run businesses could use the office space.
1575	Would like to see a larger library branch and a bigger space in the library dedicated to coworking spaces where small home-run businesses could use the office space.
1576	Would like to see a larger library branch and a bigger space in the library dedicated to coworking spaces where small home-run businesses could use the office space.
1577	Would like to see a larger library branch and a bigger space in the library dedicated to coworking spaces where small home-run businesses could use the office space.
1578	Would like to see a larger library branch and a bigger space in the library dedicated to coworking spaces where small home-run businesses could use the office space.
1579	Would like to see a larger library branch and a bigger space in the library dedicated to coworking spaces where small home-run businesses could use the office space.
1591	Regenerative agriculture; better alternatives to car travel-i.e. footpaths, bike paths, public transit, native plants; subsidized home maintenance and improvements
1593	recycling

Appendix

Appendix A - Community Survey Written Responses

1604	Public and private higher educational institutions provide instruction, employment, and housing to a variety of students, and play an important role in combating COVID-19 and its after effects, and their efforts should be supported by COVID-related funding from Greene County; availability of such funding will help the universities continue to combat COVID and its effects.
1605	A larger facility for the Republic Library.
1606	Local public and private institutions of higher education are important members of the community, and their contributions to the fight against and recovery from COVID-19 should be recognized with specifically ear-marked funds to support their work
1607	Public and private higher educational institutions provide instruction, employment, and housing to a variety of students, and play an important role in combating COVID-19 and its after effects, and their efforts should be supported by ARPA funding from Greene County.
1608	Funds to expanded Republic's Library branch. Our community love the library and many people use it daily!
1612	Local public and private institutions of higher education are important members of the community, and their contributions to the fight against and recovery from COVID-19 should be recognized with specifically ear-marked funds to support their work.
1635	A bigger library for Republic
1639	Helping the working poor.
1641	Higher educaiton
1642	Road conditions.
1643	Yes. Addressing the horrendous rate of STD's and unplanned pregnancies. Also the fact that state taxes are being falsely used to support religiously affiliated pregnancy care centers which HAVE NO MEDICAL PERSONNEL employed nor do they fall under the mandatory reporting law for child abuse, neglect, and incest. https://www.ky3.com/content/news/Report-Springfield-among-US-cities-with-the-highest-STD-rates-567107921.html#:~:text=Springfield%20ranked%2058th%20in%20the,STD%20cases%20per%20100%2C000%20people.
1644	More funding for local libraries. More services to provide transportation and housing (NOT shelters) to the homeless population in the area.
1652	Small business
1653	Business should get help
1661	Springfield
1663	I think it would be great to improve energy infrastructure including green energy. It would be great to lead the nation in something positive. Also with natural gas double it's cost last year it only makes since. Double down the current incentives for low income and build better capacity. Law enforcement would also be great. Prevention is far better. One unit with fake Amazon packages or unlocked car bait and gpa trackers would clean up a lot of the crap that has no results when reported after the fact.
1664	Older youth services (Teenagers)
1666	Fiber Internet. please.
1672	Affordable quality housing availability is very limited. There are plenty of abandoned houses in Springfield that can be purchased and remodeled to be converted to affordable housing.
1682	Financial literacy!

Appendix

Appendix A - Community Survey Written Responses

1683	More integrated/accessible detox and substance use treatment programs
	For all of the 5 things checked above, making sure that efforts are made to reach all individuals and families, not simply low-income. Many "middle class" families also struggle with food insecurity, access to health services, housing etc. Plus, incorporating a more diverse crowd will likely help to decrease stigma around these issues. For example, if a pop up food pantry was advertised to all families, regardless of income, it might help lower income individuals and families to not feel so singled out.
1689	
1700	More programs and continued support for victims and abusers of any kind of abuse
1701	I would love if the Republic branch was bigger for our quickly growing community.
1709	Library (Greene County) materials and/or services
1711	Enlarged library center - more hobby program opportunities (in Republic)
1713	homelessness, infrastructure
1715	Expanded library in Republic on same site if possible
1716	Bigger library
	Just low income housing for families with more than 4 or 5 people. Most "low-income housings" don't allow families of more than 5 persons to reside in the housing unit. This is unfair for those of us with 3 or
1717	4 kids. Need the help!

Appendix

Appendix B - Greene County ARPA Letters of Interest

Applicant	Project/Use of Funding	Amount Requested
Housing Authority of Springfield	Veterans Supportive Housing Construction	
Court Appointed Special Advocates	Funding to Expand CASA Services	
Greene County Sheriff	Premium Pay for Essential Workers	\$3,000,000.00
City of Strafford	Strafford Water System Upgrades	\$3,000,000.00
International Association of Fire Fighters (Local 152)	Premium Pay for Essential Workers	\$25,000 per member
	Personal Protective Equipment	
	Incurred Costs to Greene County Fire Protection Districts While Responding to the Pandemic	
Greene County Agricultural and Mechanical Society/Ozark Empire Fairgrounds	Multipurpose Indoor Arena	\$10,000,000
Ozark Greenways	South Creek /Wilson's Creek Greenway Gap Trail Project	\$2,000,000.00
	Wilson's Creek Greenway Trail Gap Project	\$3,000,000.00
	Chadwick Flyer Trail Segment Project	\$5,000,000.00
		\$10,000,000.00
Public Water Supply District Number 5 (Fair Grove)	Water Projects	
Springfield Convention & Visitors Bureau Board of Directors	Improving Springfield's Amateur Sports Facilities	
Springfield Sports Commission	Improvements to Sports Facilities	
Harter House Eastgate/Inc	Hazard Pay	\$71,174.23
	Additional Expenses	\$3,075.52
	Bonus for Full Time Workers	\$39,000.00
		\$113,249.75
Ozark Empire Grocers Association	Supporting Grocery Retailers and their Employees	
Greene County Family Justice Center	Tuckpointing the Tefft Building	\$125,000.00
Greene County Building Operations	Better air quality for campus buildings	\$388,920.00
	Upgrading the Morgue HVAC	\$56,500.00
	HVAC Upgrades for PSC, Archives, Judicial Center, and Operations Center	\$485,000.00
		\$930,420.00
Greene County Environmental Division	Westbury Sewer District	\$207,000.00

Appendix

Appendix B - Greene County ARPA Letters of Interest

	Alvin Clifton Sewer District	\$171,000.00
	Teton Estates (Teton Drive) Sewer District	\$300,000.00
	Teton Estates and Holliday Hills Sewer District	\$1,050,000.00
	Ridgeview Terrace Sewer District	\$765,000.00
	Prairie View Heights Stormwater Infrastructure	\$250,000.00
	Comar Addition Stormwater Infrastructure	\$100,000.00
	Lake Latoka Project	\$1,020,000.00
	Needmore Branch	\$170,000.00
	Allendale Lake Sewer Line	\$1,000,000.00
		\$5,033,000.00
Greene County Sherrif/Jail	UV Lighting in Dayroom HVAC Units	\$86,653.00
	Video Court Expansion	\$122,967.00
	Medical Isolation Rooms	\$160,000.00
		\$369,620.00
thyssekrupp	Furnish and Installation of Passenger Elevator	\$84,000.00
Springfield-Greene County 9-1-1 Emergency Comms	Next Gen 911 Technology	\$2,375,000
Springfield-Greene County Library District	Republic Branch Library	\$11,900,000.00
Casey Calton *(Request Letter Attatched)	Premium Pay for Nurses and Firefighters	
Community Partnership of the Ozarks & the Ozarks Alliance to End Homelessness	Comprehensive Housing Study of Springfield	\$75,000
	Springfield Community Land Trust: Acquisition and Rehabilitation - Vacant and Nuisance Properties	\$3,750,155
	The Gathering Tree: Eden Village 3 (Emergency Shelter) Springfield	\$300,000
	Community Land Trust: Acquisition and Rehabilitation - Hotel for ES/Respite	\$4,500,000
	(Emergency Shelter) The Kitchen, Inc. - Construction	\$5,000,000
	Crisis Sheltering Coordination	\$180,155
	Community Based Case Management	\$250,000
	The Gathering Tree: 66 Cottages	\$1,500,000
	Purpose Driven Day Center	\$3,000,000
		\$18,555,310
City of Springfield Department of Workforce Development	APPLIE Reentry Program	\$425,243.75
	Incumbent Worker Training	\$2,268,286.58
	Fire Academy	\$1,373,970.97
	Project CoRE	\$1,229,940.97

Appendix

Appendix B - Greene County ARPA Letters of Interest

	Art at Work	\$274,890.97
	BuildHER	\$407,108.57
	iCreate & Discover Healthcare	\$411,608.57
	Rent (Springfield Affiliate Office and North Affiliate Office)	\$1,406,256.84
		\$7,797,307.22
Restoration of Hope Project	Construction of a new building closer to the courts and bus depot	\$500,000.00
Ozarks Technical Community College	A&P Program new training facility	\$750,000.00
Springfield Animal Advocacy Foundation (SAAF) Spay & Neuter Clinic	Continue to provide low-cost spay / neuter and vaccination services to those who typically cannot afford	
Springfield Art Museum	Capital Improvement and Expansion Project	\$2,000,000.00
Greene County Prosecuting Attorney	Premium pay to eligible County workers (assistant prosecuting attorneys, victim witness office staff, prosecuting attorney investigators & receptionists, and Greene County Family Justice staff)	
	Initial implementation of and first three years of maintenance for a digital evidence management program for the PA's office	
The Kitchen, Inc.	Additional 12-unit emergency shelter	\$4,500,000.00
Central Christian Church (Disciples of Christ)	Funding for outreach program that provides housing and utility needs	
		\$81,032,907

Appendix

Appendix C - Community Survey



Community Survey



How should Greene County prioritize the spending of the Coronavirus State & Local Recovery Funds? Thank you for your assistance in this community survey. The survey is available until 9/23. We will share the results on the county website and use the responses to assist in finalizing county priorities.

1. Please indicate the areas that you consider high priority for our county to address with the American Rescue Act funding (Check up to 5 boxes). The areas listed are eligible under the guidelines for the funding.

- | | |
|---|--|
| <input type="checkbox"/> Vaccination | <input type="checkbox"/> Healthy Childhood Environments: Service to Foster Youth |
| <input type="checkbox"/> Testing and Contact Tracing | <input type="checkbox"/> Housing Support: Affordable Housing |
| <input type="checkbox"/> Mental Health Services | <input type="checkbox"/> Housing Support: Service to Unhoused Persons |
| <input type="checkbox"/> Personal Protective Equipment | <input type="checkbox"/> Health Social Factors: Community Violence Interventions |
| <input type="checkbox"/> Substance Use Services | <input type="checkbox"/> Premium Pay for Public Sector Employees |
| <input type="checkbox"/> Household food programs | <input type="checkbox"/> Grants for other employees |
| <input type="checkbox"/> Mortgage Assistance | <input type="checkbox"/> Broadband |
| <input type="checkbox"/> Job Training Assistance | <input type="checkbox"/> Water and Sewer |
| <input type="checkbox"/> Assistance to Nonprofit Organizations | <input type="checkbox"/> Revenue Replacement: Provision of Government Services |
| <input type="checkbox"/> Aid to Tourism, Travel, Hospitality Industry | |
| <input type="checkbox"/> Small Business Economic Assistance | |
| <input type="checkbox"/> Education Assistance: Early Learning | |
| <input type="checkbox"/> Healthy Childhood Environments: Child Care | |

2. What part of Greene County do you live in?

- | | |
|--------------------------------------|--|
| <input type="checkbox"/> Ash Grove | <input type="checkbox"/> Springfield |
| <input type="checkbox"/> Battlefield | <input type="checkbox"/> Strafford |
| <input type="checkbox"/> Brookline | <input type="checkbox"/> Walnut Grove |
| <input type="checkbox"/> Fair Grove | <input type="checkbox"/> Willard |
| <input type="checkbox"/> Republic | <input type="checkbox"/> Unincorporated / Outside of City Limits |
| <input type="checkbox"/> Rogersville | |

3. Is there another community need that you would like to specify?

Appendix

Appendix D - Nonprofit Listening Sessions Attendance Sheet

Attendants at Nonprofit Listening Sessions	
Name	Organization
Marlon Graves	A Girl Like Me Network
Jean Kalapathy	A Girl Like Me Network
Kunti Bentley	A Girl Like Me Network
Shawntra Johnson	A Girl Like Me Network
Lola Butcher	Be A Jewel
Larry Long	Big Brothers Big Sisters
Elizabeth Avery	Burrell Center
Laura Farmer	CASA of Southwest Missouri
Maura Taylor	Catholic Charities of Southern Missouri
Lori Barnes Miller	Child Advocacy Center
Dana Carroll	Community Partnership of the Ozarks
Holly Wilson	Consumer Credit Counseling Service of the Ozarks
Trenton Sims	Council of Churches of the Ozarks
Jill Bright	Diaper Bank of the Ozarks
Kelly Brown	Diaper Bank of the Ozarks
Rob Blevins	Discovery Center
Amy Blansit	Drew Lewis Foundation
Trish McAdams	Girls on the Run Southwest Missouri
Jamie Willis	Greene County Family Justice Center
Yolanda Lorge	Grupo Latinoamericano
Kelsey Milholland	Habitat for Humanity
Charlotte McCoy	History Museum on the Square
Tim Smith	James River Basin Partnership
Darla Holloran	Judevine Center for Autism
John Markey	Lake Country Soccer
Carrie Richardson	Leadership Springfield
Danny Espinoza	Life 360 Community Services
Jamie Fields	Lost & Found Grief Center
Mike Woody	Lost & Found Grief Center
Darline Mabins	Minorities in Business
Kai Sutton	NAACP
Larry Maddox	New Growth Ministries
Pamela Jackson	New Growth Ministries
Paige Anthony	New Growth Ministries
John Oke-Thomas	Oke-Thomas & Associates
Mary Kromrey	Ozark Greenways
Ruth Shryack	Ozarks Regional YMCA
Tony Gunn	Project You Belong
Bonnie Keller	Ronald McDonald House of the Ozarks
Kelly Harris	Safe to Sleep
Bailey Greene	SeniorAge

Appendix

Appendix D - Nonprofit Listening Sessions Attendance Sheet

Attendants at Nonprofit Listening Sessions	
Name	Organization
Leslie Forrester	Springfield Arts
Becky Overend	Springfield Little Theater
Jennifer Cotner-Jones	Springfield Symphony
Tery O'Shell	Springfield Symphony
Christie Love	The Connection Grounds
Winter Kinne	The Doula Foundation
Crystal Perkins	The Doula Foundation
Kimberly Costello	The Doula Foundation
Brandi Bartel	The Victim Center
Monica Horton	Ujima Language and Literacy
Kimberly Lippelman-Nash	United Way of the Ozarks
John Pace	Victory Mission
Dave Myers	Victory Mission
Carol Daniel	Women's Medical Respite
Jan Weiss	Women's Medical Respite



Bibliography

CDC. "Health Equity Considerations and Racial and Ethnic Minority Groups." Centers for Disease Control and Prevention. Centers for Disease Control and Prevention, 2021. <https://www.cdc.gov/coronavirus/2019-ncov/community/health-equity/race-ethnicity.html>.

City of Springfield. "Committee Reviews ARPA Survey Results, Recommends Retention Pay for Police, Fire and Health Staff." City of Springfield, 2021. <https://www.springfieldmo.gov/CivicAlerts.aspx?AID=8737>.

Commission on Human Rights, and City of Springfield. "Springfield (MO) Inclusion Survey 2020." City of Springfield, 2020. <https://www.springfieldmo.gov/DocumentCenter/View/50681/Springfield-Inclusiveness-Survey>.

Community Focus 2021. Community Foundation of the Ozarks, 2021. https://springfieldcommunityfocus.org/2021_report/springfield-community-focus-report-2021.pdf.

Foster, Lyle, and Ximena Uribe-Zarain. "2020 Survey Report: COMMUNITY'S DIVERSE YOUNG PROFESSIONALS." Missouri State, 2020. <https://diversity.missouristate.edu/Assets/diversity/2020-Communitys-Young-Professional-Survey.pdf>.

Holman, Gregory. "New Census Results Show Springfield and Southwest Missouri Becoming More Diverse." Leader. Springfield News-Leader, August 13, 2021. <https://www.newsleader.com/story/news/local/ozarks/2021/08/13/census-2020results-data-shows-springfield-missouri-mo-population-becoming-morediverse/8123251002/>.

Looker, Rachel. "Counties Use ARP Funds to Advance Equity." NACO, 2021. <https://www.naco.org/articles/counties-use-arp-funds-advance-equity>.

Missouri Economic Research and Information Center. "Ozark Region." Regional Profiles - Ozark | Missouri Economic Research and Information Center, 2021. <https://meric.mo.gov/regional-profiles/ozark>.



Bibliography

“Population of Greene County, Missouri:Census 2010 and 2000 Interactive Map, Demographics, Statistics, Graphs, Quick Facts.” CensusViewer. Accessed October 26, 2021. <http://censusviewer.com/county/MO/Greene>.

Rohde, Jeff. “Springfield, Mo Real Estate Market: Stats & Trends for 2021.” Learn Real Estate Investing. Roofstock Realty, Inc. [CA License #01995170], September 15, 2021. <https://learn.roofstock.com/blog/springfield-real-estate-market>.

Springfield Regional Arts Council. “‘Springfield Now Has Hard Data to Describe the Local Arts Economy’ by Gregory Holman, Springfield News-Leader (July 13, 2017).” Springfield Regional Arts Council. Accessed November 10, 2021. <https://www.springfieldarts.org/springfield-arts-mean-business>.

“U.S. Census Bureau Quickfacts: Greene County, Missouri.” United States Census Bureau . Accessed October 26, 2021. <https://www.census.gov/quickfacts/greencountymissouri>.

“U.S. Census Bureau Quickfacts: Springfield City, Missouri.” Accessed November 1, 2021. <https://www.census.gov/quickfacts/fact/table/springfieldcitymissouri/PST045219>.

Van Schoik, Michael. “Springfield Neighborhoods Address Concerns as 2021 Approaches US Gun Violence Highs.” KY3, 2021. <https://www.ky3.com/2021/09/21/springfield-neighborhoods-address-concerns-2021-approaches-us-gun-violence-highs/>.

Van Schoik, Michael. “Springfield Police Dept. Releases Its Midyear Crime Stats for 2021.” KY3, 2021. <https://www.ky3.com/2021/09/30/springfield-police-dept-releases-its-midyear-crime-stats-2021/>.

Zumper. “Average Rent in Springfield, MO and Cost Information.” Zumper, 2021. <https://www.zumper.com/rent-research/springfield-mo>.