



**FOR IMMEDIATE RELEASE**

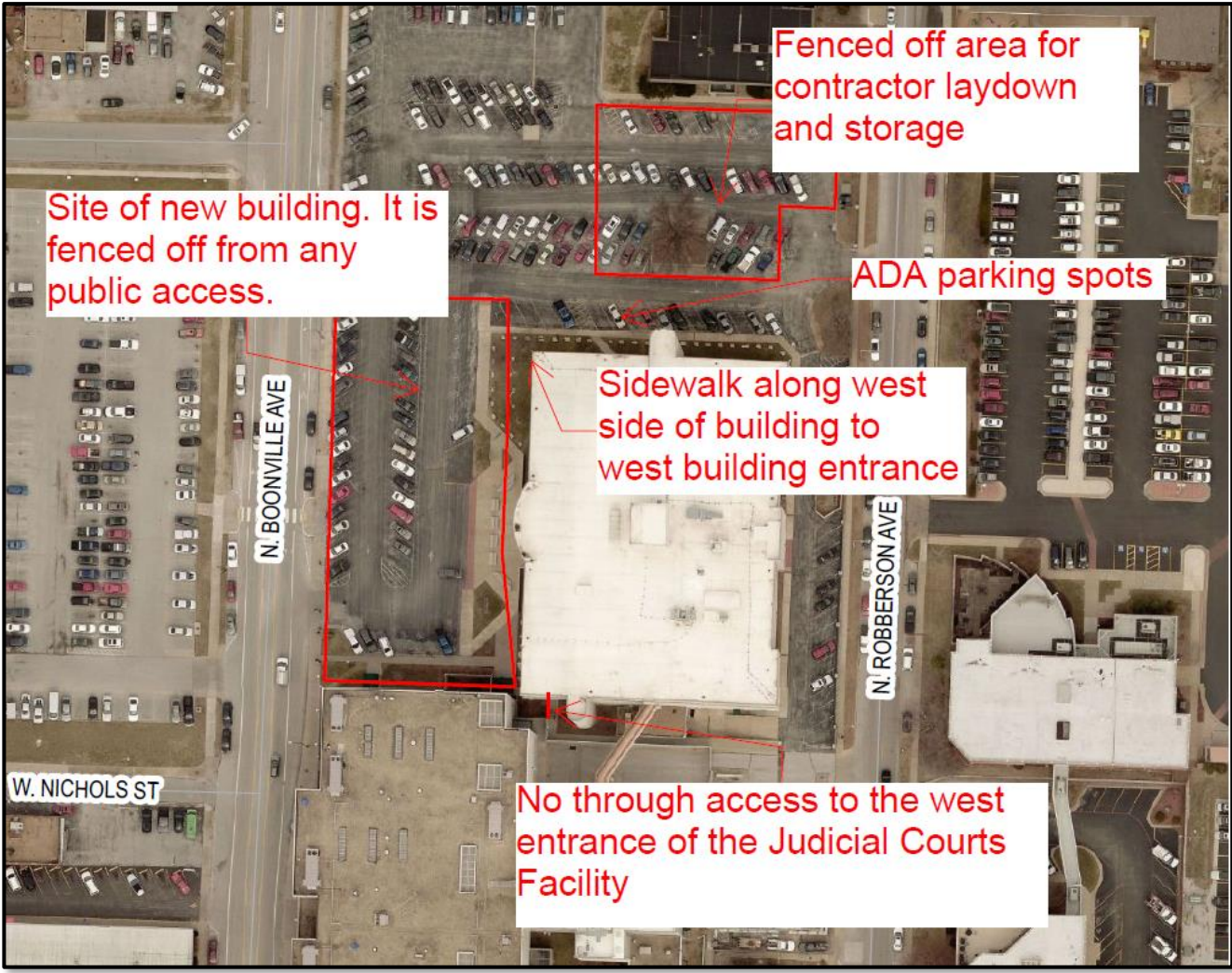
**Mar. 14, 2025**



## **Parking and entrance locations during new building construction**

*SPRINGFIELD, Mo.* – Construction has begun on a new building that will serve as a secured entrance and connect the Greene County Judicial Courts Facility and former Sheriff's Office and Jail on Boonville Ave in Springfield.

Citizens attending court can view the following aerial maps that show public parking lot locations and how to enter the Judicial Courts Facility during the construction.







The picture above is an artist’s rendering of what the completed project will look like.

The new building is a part of several projects and renovations under the Greene County Campus Plan. More details can be found here:  
<https://www.greencountymo.gov/files/PDF/file.pdf?id=41125>

###

*Greene County is the State of Missouri’s fourth most populous county, serving approximately 295,000 people. Its mission is to provide all citizens of Greene County, including those in its cities, a safe and thriving community through excellent customer service, unparalleled dedication, and the efficient use of taxpayer dollars. The Greene County Commission is the executive body of Greene County operating under guidelines established in the Revised Statutes of the State of Missouri. Within that authority the Commission enacts ordinances, resolutions and policies, supervises the activities of county departments, fixes salaries, adopts the annual budget, provides for construction and other services, and conducts hearings on planning and zoning matters.*

**For additional information contact the Greene County Public Information Office at 417-844-4311 or [pio@greencountymo.gov](mailto:pio@greencountymo.gov).**